

Guide Rails and Brackets L Type

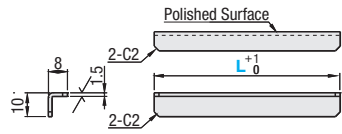
Dedicated web site <http://fa.misumi.jp/cvs/>
Conveyor selecting, component purchases,
and easy search for maintenance parts are available.

L-Shaped Conveyor Guide Rails

CGL



RoHS10



Material: EN 1.4301 Equiv.

Part Number	L 5mm Increment	Unit Price
CGL	150~ 300	
	305~ 500	
	505~ 750	
	755~1000	

Ordering Example
Part Number - L
CGL - 380

L-Shaped Conveyor Guide Rail Brackets - Standard Type

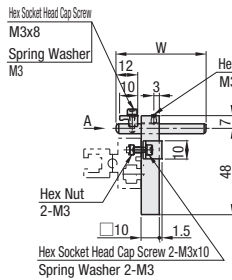


RoHS10

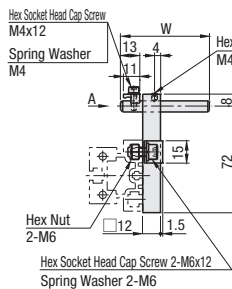
CGK
(W=50,60)

CGKL
(W=100)

No.55

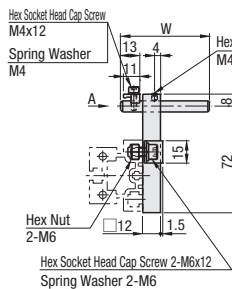


No.70



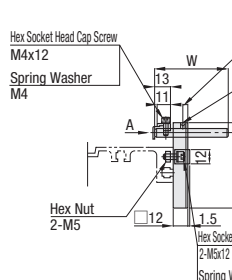
Material: EN 1.4301 Equiv.

No.80



Material: EN 1.4301 Equiv.

No.55



No.70



Material: EN 1.4301 Equiv.

No.80



Material: EN 1.4301 Equiv.

Part Number	Type	No.	W	Unit Price
CGK (W=50,60)		55	50	
		70	60	
		80		
CGKL (W=100)		55	100	
		70		
		80		

Ordering Example
Part Number
Type No.
CGK 80

Alterations
Part Number
Type No. - (CL)
CGK 70 - CL

Alterations	Code	Spec.
Change to Product with Clamp Lever 	CL	Hex socket set screws are replaced with the clamp lever (Orange, CLDMC4-8-M Equiv.). ⊗ Not applicable to CGK55/CGKL55

L-Shaped Conveyor Guide Rail Brackets - Offset Type

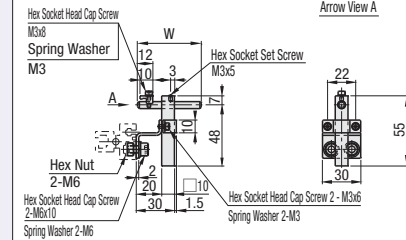


RoHS10

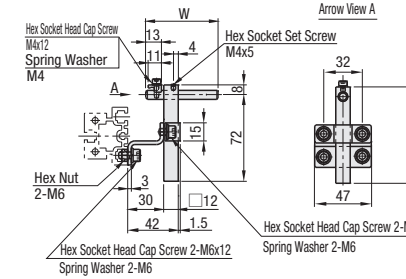
CGH
(W=50,60)

CGHL
(W=100)

No.55



No.80



⊗ No.55 ~ 80 have different bolt size for the conveyor mount part. Select an appropriate bolt according to the conveyor you are using.

Material: EN 1.4301 Equiv.

Part Number	Type	No.	W	Unit Price
CGH (W=50,60)		55	50	
		70	60	
		80		
CGHL (W=100)		55	100	
		70		
		80		

Ordering Example
Part Number
Type No.
CGH 55

Alterations
Part Number
Type No. - (CL)
CGH 70 - CL

Alterations	Code	Spec.
Change to Product with Clamp Lever 	CL	Hex socket set screws are replaced with the clamp lever (Orange, CLDMC4-8-M Equiv.). ⊗ Not applicable to CGH55/CGHL55

Example

