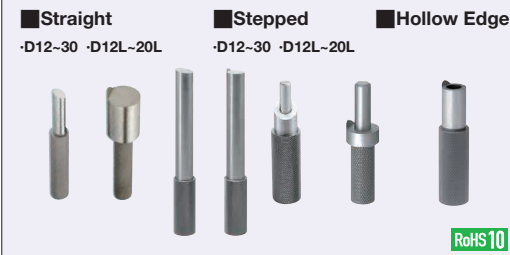


Marking Pins

Straight, Stepped, Hollow Edge

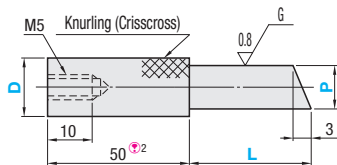
■ **Features:** Suitable when confirming dimensions by scribing on work pieces. For applicable bushings (② Stepped Type) see **P1841, P1845**.



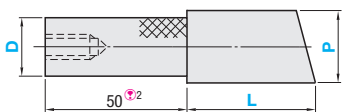
Config.	Material ^①	Hardness	① Straight		② Stepped		③ Hollow Edge	
			Type		Type		Type	
			P _{0.02}	P _{g6}	S _{0.02}	S _{g6}	P _{g6}	
Standard	EN 1.2510 Equiv.	58HRC~	KJPKH	KJPGKH	KJPKS	KJPGKS	-	
Sharp Pointed Tip	EN 1.2510 Equiv.	58HRC~	KJPKHE	KJPGKHE	KJPKSE	KJPGKSE	KJPGKSC	

① When L dimension is 51 or more, the material for the handle part is EN 1.1191 Equiv.

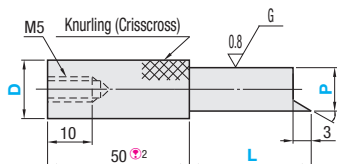
① Straight (Standard) Small Head: D=12~30



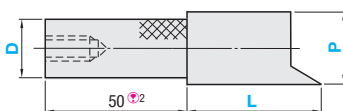
Large Head: D=12L~20L^③



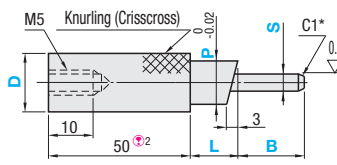
① Straight (Sharp Pointed Tip) Small Head: D=12~30



Large Head: D=12L~20L^③

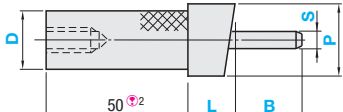


② Stepped (Standard) Small Head: D=12~30

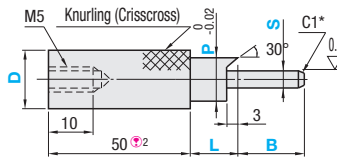


* When S=2, C is 0.5.

Large Head: D=12L~20L^③

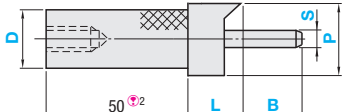


② Stepped (Sharp Pointed Tip) Small Head: D=12~30



* When S=2, C is 0.5.

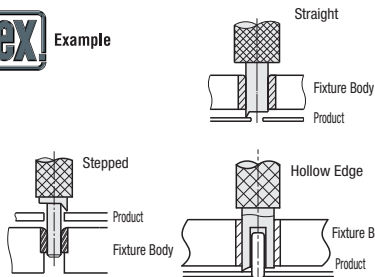
Large Head: D=12L~20L^③



③ Handles and pins may be joined with an adhesive. Note that Heat or strong force may cause separation.



Example



② For shorter handle length, please refer to the alteration ZC on the next page.
③ Dimensions not specified are the same as Small Head Type.

① Straight

Part Number		D	P 0.01mm Increment	L 1mm Increment	Unit Price							
TYPE					Standard				Sharp Pointed Tip			
P _{0.02} ⁰	P _{g6}				KJPKH		KJPGKH		KJPKHE		KJPGKHE	
					L10~50	L51~100	L10~50	L51~100	L10~50	L51~100	L10~50	L51~100
(Standard) KJPKH	(Standard) KJPGKH	12	6.00~10.00	10~100								
		16	10.01~14.00									
		20	14.01~18.00									
		25	18.01~20.00									
(Sharp Pointed Tip) KJPKHE	(Sharp Pointed Tip) KJPGKHE	30	20.01~25.00	10~50								
		12L	12.00~20.00		-	-	-	-	-	-	-	
		16L	16.00~25.00		-	-	-	-	-	-	-	
		20L	20.00~30.00		-	-	-	-	-	-	-	

② Stepped

Part Number		D	P 0.01mm Increment	S (P-4≥S) 0.1mm Increment	L 1mm Increment	B 1mm Increment	Unit Price			
TYPE							Standard		Sharp Pointed Tip	
S _{0.02}	S _{g6}						KJPKS	KJPGKS	KJPKSE	KJPGKSE
(Standard) KJPKS	(Standard) KJPGKS	12	6.00~10.00	2.0~6.0	5~20	10~20				
		16	8.00~14.00	3.0~10.0						
		20	10.00~18.00	3.0~14.0						
		25	15.00~23.00	6.0~19.0						
		30	20.00~28.00	10.0~24.0						
		12L	12.00~20.00	3.0~16.0						
		16L	16.00~25.00	6.0~21.0						
		20L	20.00~30.00	10.0~26.0						
(Sharp Pointed Tip) KJPKSE	(Sharp Pointed Tip) KJPGKSE	12	6.00~10.00	2.0~6.0	5~20	10~40				
		16	8.00~14.00	3.0~10.0						
		20	10.00~18.00	3.0~14.0						
		25	15.00~23.00	6.0~19.0						
		30	20.00~28.00	10.0~24.0						
		12L	12.00~20.00	3.0~16.0						
		16L	16.00~25.00	6.0~21.0						
		20L	20.00~30.00	10.0~26.0						

③ Hollow Edge

Part Number	D	S 0.1mm Increment	L ^① 1mm Increment	B 1mm Increment	P ^②	Unit Price
Type						
KJPGKSC	12	2.0~4.0	5~40	3~15	10	
	16	3.0~6.0		3~30	12	
	20	6.0~10.0		5~30	16	
	25	8.0~14.0		5~35	20	
	30	12.0~19.0		5~35	25	

① When L dimension of Hollow Edge Type is short, it may interfere with M5 screw pilot hole.
② When Hollow Edge Type needs P dimension specified, use alteration PC.



Ordering Example


- ① Straight Standard
- ① Straight, Sharp Pointed Tip
- ② Stepped Standard, Large Head
- ③ Hollow Edge, Sharp Pointed Tip

Part Number (TYPE, D)	P	S	L	B
KJPKH20	P16.00	-	L100	-
KJPKHE16	P10.10	-	L12	-
KJPKS16L	P20.20	S6.8	L10	B10
KJPGKSC16	-	S6.0	L10	B10

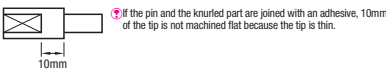


Alterations

Part Number	P	S	L	B	(CH, KH, PKC...etc.)
KJPKH16	P10.1	-	L12	-	CH
KJPGKSC20	-	S8.0	L25	B20	PC14
KJPKHE12	P7.02	-	L80	-	ZC30
KJPKSE16L	P20.00	S12.1	L15	B20	PKC

Alterations	Code	Spec.														
Additional Surface Treatment (Black Oxide)	STC	Adds black oxide surface treatment.														
<p>P Dimension</p> 	PC	<p>Changes the P dimension.</p> <p>③ Applicable to Hollow Edge Type only.</p> <p>③ Specify the tap size so that 3mm or more wall thickness remains. (PC≥S+6)</p> <table border="1"><thead><tr><th>Ordering Code</th><th>PC13</th></tr></thead><tbody><tr><td>D</td><td>PC</td></tr><tr><td>12</td><td>8, 9</td></tr><tr><td>16</td><td>10, 11</td></tr><tr><td>20</td><td>12~15</td></tr><tr><td>25</td><td>16~19</td></tr><tr><td>30</td><td>20~24</td></tr></tbody></table>	Ordering Code	PC13	D	PC	12	8, 9	16	10, 11	20	12~15	25	16~19	30	20~24
Ordering Code	PC13															
D	PC															
12	8, 9															
16	10, 11															
20	12~15															
25	16~19															
30	20~24															
Engraving of the Specified Characters	KF	<p>Engraves alphabet or number.</p> <p>③ Ordering Code] KF-MISUMI0034</p> <p>Printable Character: alphabet, number, . (period)</p> <p>③ No symbols, such as a hyphen (-), other than those mentioned above may be used for engraving.</p> <p>③ The pin's orientation to the pin to the engraved characters is arbitrary.</p> <p>③ Engraved on the reverse side when combined with KH.</p> <table border="1"><thead><tr><th rowspan="2">Z (Handle)</th><th colspan="2">Max. Characters</th></tr><tr><th>Small Head</th><th>Large Head</th></tr></thead><tbody><tr><td>30</td><td>10</td><td>5</td></tr><tr><td>40</td><td rowspan="2">12</td><td rowspan="2">10</td></tr><tr><td>50</td></tr></tbody></table> <p>③ Up to 8 digits max.</p> <p>③ When combining with other options, enter this last.</p>	Z (Handle)	Max. Characters		Small Head	Large Head	30	10	5	40	12	10	50		
Z (Handle)	Max. Characters															
	Small Head	Large Head														
30	10	5														
40	12	10														
50																
Engraving of P Dimension	KH	<p>Machines flats on knurled head and engraves P dimension (with the character orientation arbitrary) .</p> <p>③ Engraved on the reverse side when combined with KF.</p>														

Cautions when making alterations to engraving (KF, KH)



Alterations	Code	Spec.
P Dimension Tolerance	PKC	Changes P dimension tolerance to g6. ③ Applicable to Stepped Type only.
Tip	SST	Makes acute-angled edge of Scribing Pin triangular to make it sharper. ③ Applicable to Acute-angled Type only.
Chain Alterations	CH	Loss-proof chain (length 600mm) is attached to gauge body. ③ For chains only, see P1862.
Handle Length	ZC	Changes handle length 50 to 30 or 40.