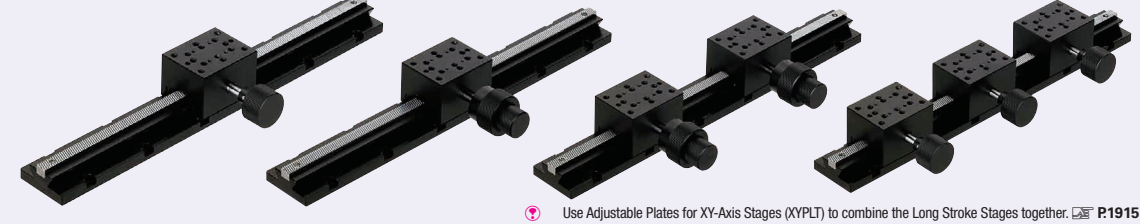


# [High Precision] X-Axis Dovetail Slide, Rack & Pinion

## Long Stroke (300mm)

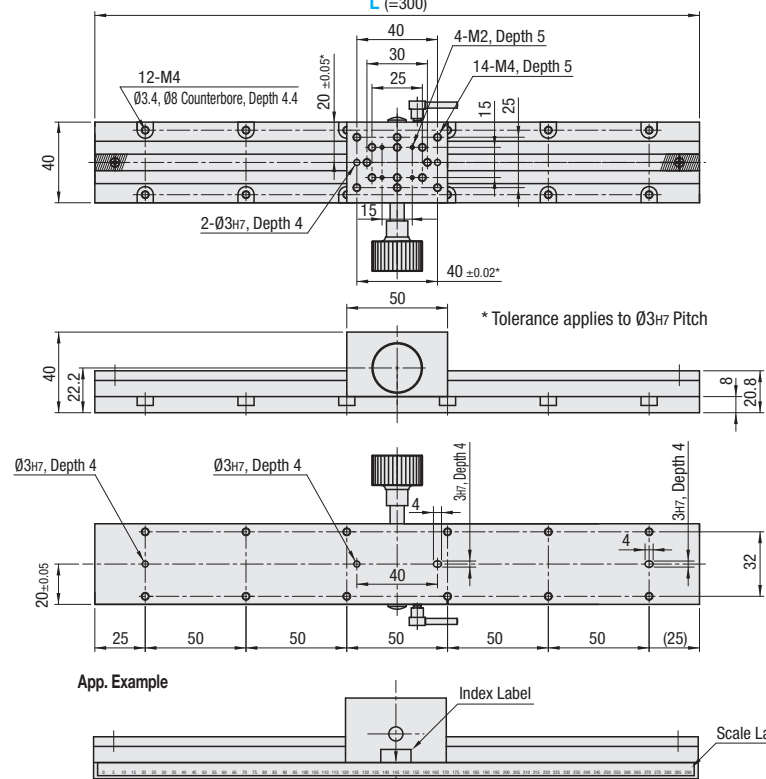
■Features: Compatible with M size board (330mmx250mm). Suitable for sensor adjustments and tooling changes.

### ■X-Axis, Long Stroke (300mm)

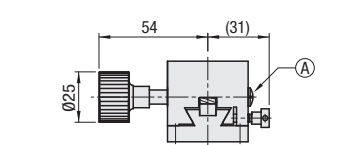


📌 Use Adjustable Plates for XY-Axis Stages (XYPLT) to combine the Long Stroke Stages together. 📄 P.1915

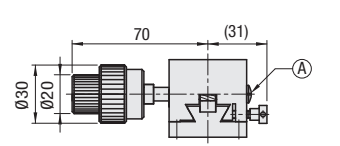
### XLONG



### ■Standard Knob



### ■Coarse/Fine Feed Knob



- 📌 Use M3 screws for mounting from top, M4 screws for mounting from bottom.
- 📌 By turning the preload adjustment screw (A) clockwise with a flathead screwdriver, the stage slides slowly, and by turning counterclockwise the stage slides quickly and smoothly.
- 📌 Dowel holes on top and bottom plates can be used to secure locating repeatability.
- 📌 Do not remove blocks from bottom plate, as blocks are preloaded and ground fit for precision, and shipped after inspection.

■ Material: Aluminum Alloy  
■ Surface Treatment: Black Anodize  
■ Accessory: Scaled Label (PET Film)  
Index Label (PET Film)

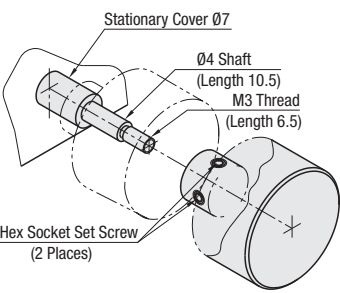
Part Number	Block	Travel Distance (mm)	Travel per Rotation (mm)	Load Capacity (N)	Travel Accuracy	Weight (kg)	Unit Price
Type	L-No.	Qty.	Coarse	Fine	Horizontal	Vertical	
XLONG	300	1	±140	18	-	49	24.5
	300-2	2	±140	18	-	49	24.5
	300-3	3	±140	18	-	49	24.5
	300-SB	1	±140	18	2.3	49	24.5
	300-2SB	2	±140	18	2.3	49	24.5
	300-3SB	3	±140	18	2.3	49	24.5

📌 Resolution: 1mm/division

Ordering Example  
Part Number  
XLONG300  
XLONG300-2SB



### ■Assembly of Standard Knob



📌 XLONG300 Standard Knob Type has an M3 set screw for the knob.

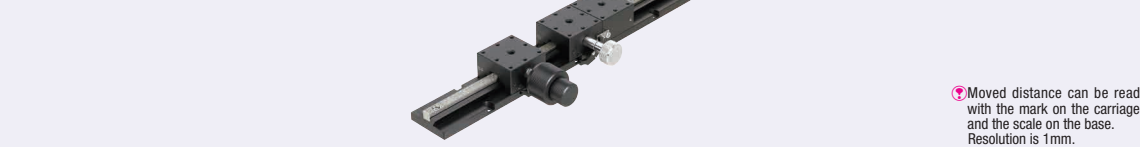
# [High Precision] X-Axis Dovetail Slide, Rack & Pinion

## Long Stroke (100, 200, 300, 400mm) Block Combination

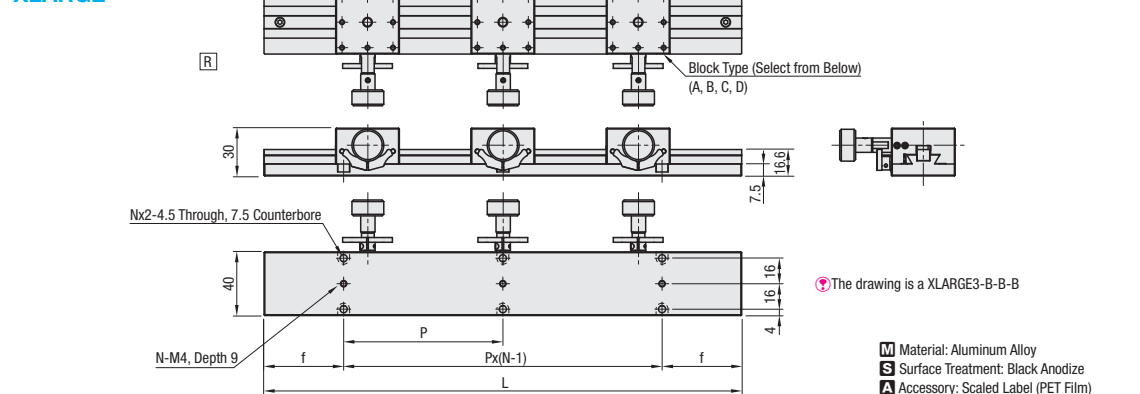
■Features: Useable for tooling changes. Numbers, type and direction of blocks and rail length are selectable.

### ■X-Axis, Long Stroke (100, 200, 300, 400mm) Block Combination

RoHS10



### XLARGE



📌 Adhesive vernier scale label can be placed at desired position in accordance with a required adjustment range.

Block Type	Standard Knob (Left)	Standard Knob (Right)	Coarse/Fine Feed Knob (Left)	Coarse/Fine Feed Knob (Right)
Direction	A	B	C	D
Shape				

📌 Dimension of \* marked part will vary ±0.3mm due to its structure.

### (Rail)

Part Number	No.	L	Block ①	Block ②	Block ③	Travel Distance *1 (mm)	Horizontal Load Capacity (N)	f	P	N	Weight *3 (kg)	Accessory Type M-L	Quantity	Unit Price
XLARGE	1	100	A	A	A	60	29.4	12.5	75*2	2	0.15	CBM4-8	4	
	2	200	B	B	B	160	29.4	25	150	2	0.29	CBM4-8	4	
	3	300	C	C	C	260	29.4	50	100	3	0.43	CBM4-8	6	
	4	400	D	D	D	360	29.4	50	100	4	0.57	CBM4-8	8	

- 📌 When L (Rail Length) = 100, only one block can be selected.
- 📌 When L (Rail Length) = 200, two blocks can be selected.
- 📌 Travel distance of \*1 is the value obtained with one block. Addition of every one block shortens the travel distance by 40mm.
- 📌 \*2 M4 (backside) is P=100
- 📌 \*3 Weight of the rail itself. Unit weight should be calculated by adding the weight of the selected number of blocks.

### (Block)

Block Type	Weight (kg)	Unit Price 1 ~ 3 pc(s).
A Standard Knob (Left)	0.12	
B Standard Knob (Right)	0.12	
C Coarse/Fine Feed Knob (Left)	0.17	
D Coarse/Fine Feed Knob (Right)	0.17	

📌 For orders larger than indicated quantity, please request a quotation.

Ordering Example  
Part Number - Block ① - Block ② - Block ③  
XLARGE2 - A - A - A  
XLARGE3 - A - B - C  
XLARGE4 - A - B - C



### Block Connecting Method

