

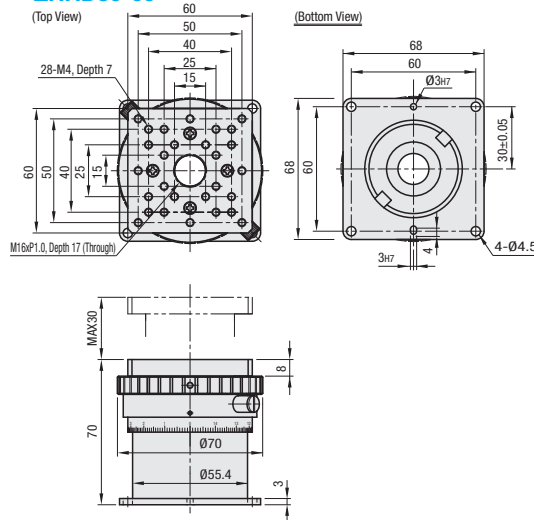
## [High Precision] Helicoid Screw, Z-Axis Level Stages

**■ Features:** Longer strokes than the Cross Roller Horizontal Surface Z-Axis Stages and equivalent load capacities to the Lab Jacks. The multi-start screws used prevent plays.

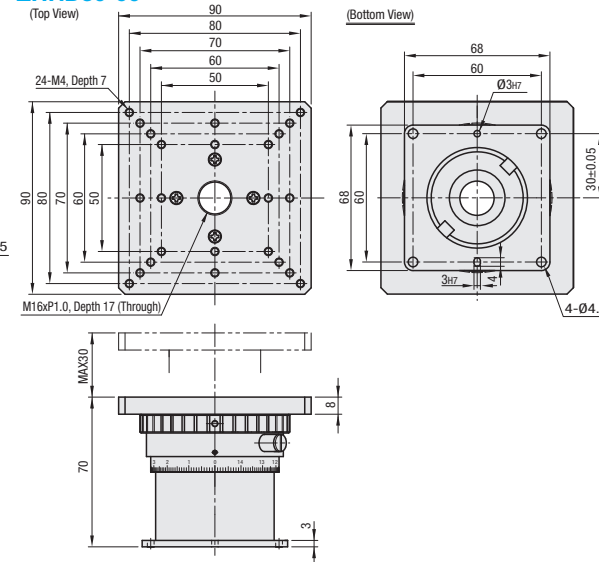
### ■ Helicoid Screw, Horizontal Surface Z-Axis Stages



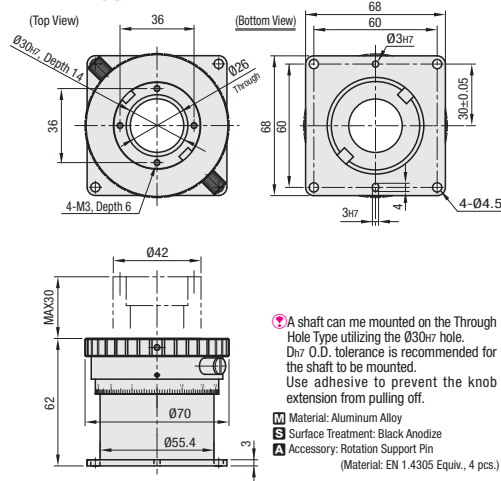
■ With Mount Plates (60, 90 Square)  
**ZHRD30-60**



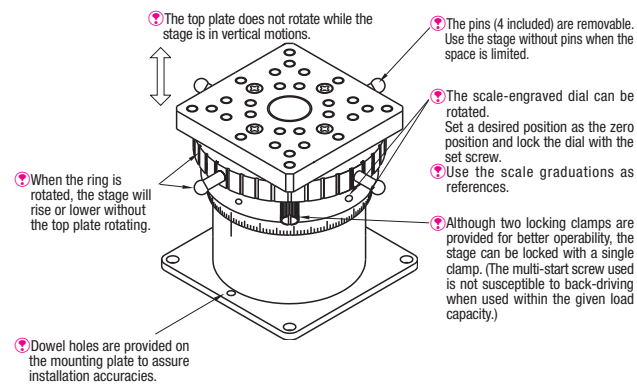
## ZHRD30-90



■Through Hole Type  
**ZHRD30-T**



**[Overview: Helicoid Screw, Horizontal Surface Z-Axis Stages]**



Part Number		Stage Surface (mm)	Travel Distance (mm)	Travel per Rotation (mm)	Load Capacity (N)	Parallelism (μm)	Weight (kg)	Accessory (4 pcs.)	Unit Price
Type	No.								
ZHRD	30-60	60x60	30	(15) *	68.6	50μm	0.50	SCB4-8	
	30-90	90x90					0.59		
	30-T	-					0.42		

\* The travel distance per knob rotation varies to some extent depending on the current table position.

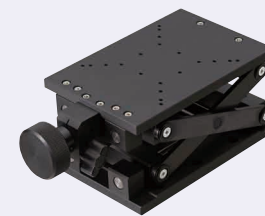


## [Standard] Lab Jack Horizontal Surface Z-Axis Stages

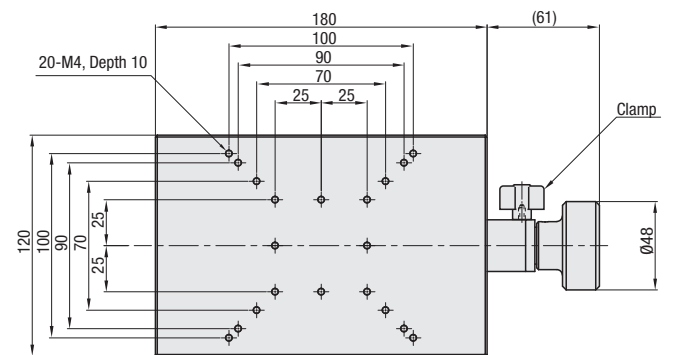
P.1977

### Points on Similar Product Comparison | Parallelism: 400µm

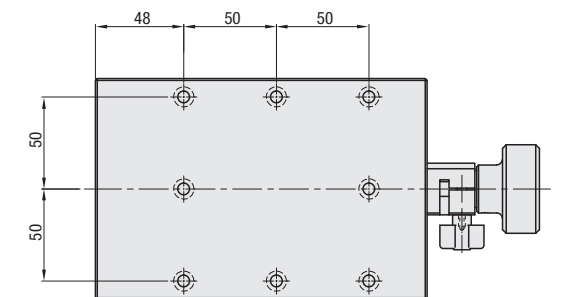
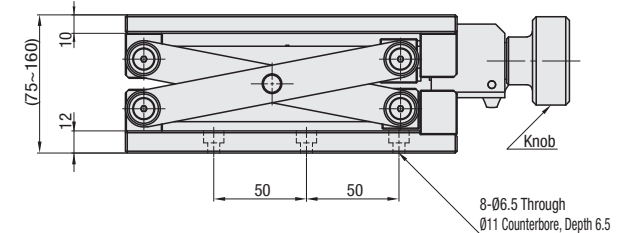
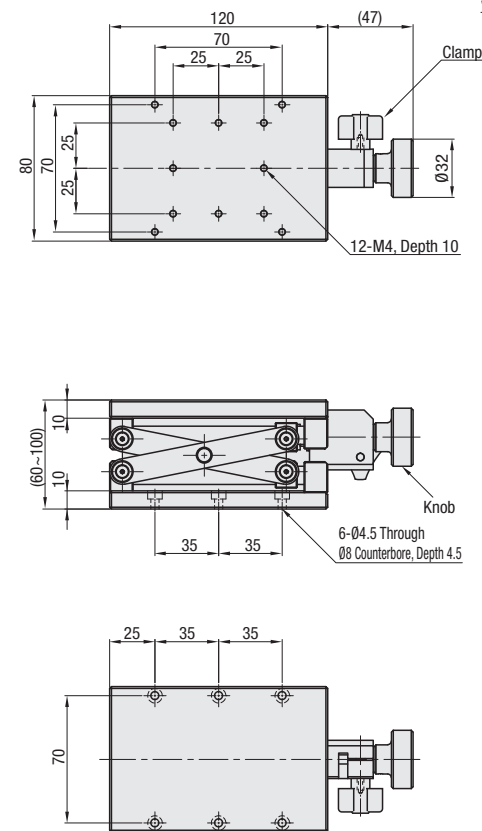
■ Horizontal Surface Z-Axis\_Lab Jack



## ZLJS120



## ZLJS80



- Knob operated elevating table with relatively high load capacity. A split clamp on the operating shaft securely holds the load in position.
- Counterclockwise rotation of the knob elevates the stage surface.
- There is some play in the horizontal direction.

**M** Material: Aluminum Alloy

**M** Material: Aluminum Alloy  
**S** Surface Treatment: Black Anodize

Part Number		Stage Surface (mm)	Travel Distance (mm)	Travel per Rotation (mm)	Parallelism (μm)	Load Capacity (N)	Weight (kg)	Unit Price
Type	No.							
ZLJS	80	80x120	40	(2)*	400	68.6	1.25	
	120	120x180	70	(3)*		98	3	

\* The travel distance per knob rotation varies to some extent depending on the current table position.

