

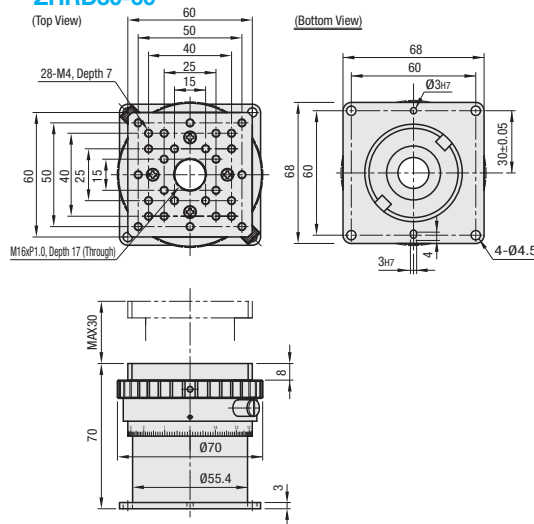
[High Precision] Helicoid Screw, Z-Axis Level Stages

■ Features: Longer strokes than the Cross Roller Horizontal Surface Z-Axis Stages and equivalent load capacities to the Lab Jacks. The multi-start screws used prevent plays.

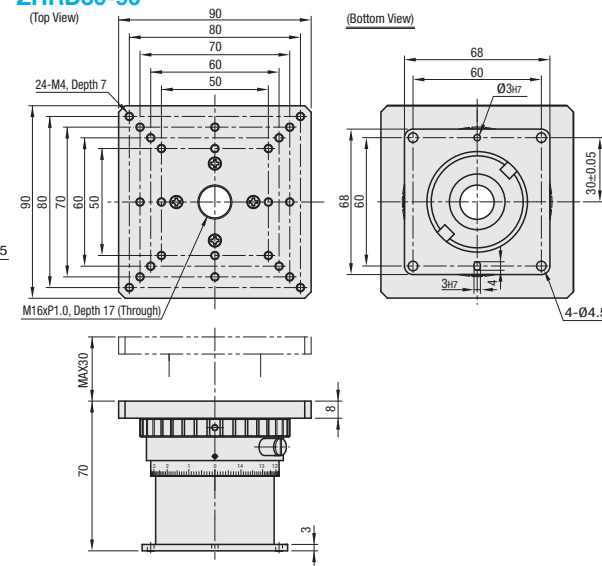
■ Helicoid Screw, Horizontal Surface Z-Axis Stages



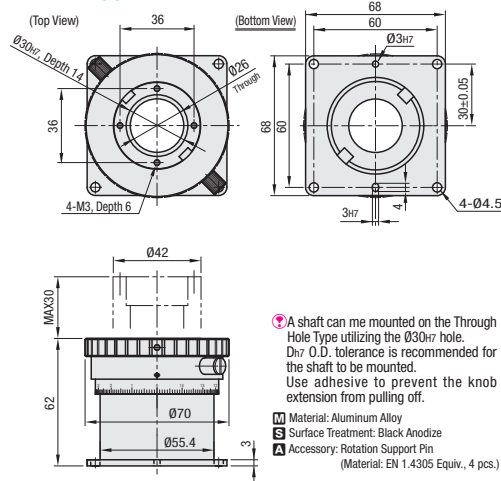
■ With Mount Plates (60, 90 Square)
ZHRD30-60



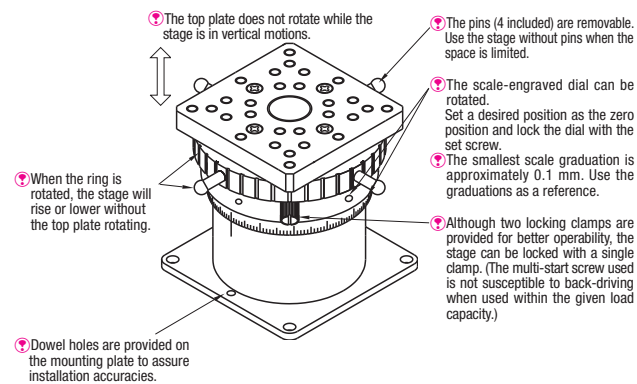
ZHRD30-90



■Through Hole Type
ZHRD30-T



[Overview: Helicoid Screw, Horizontal Surface Z-Axis Stages]



Part Number		Stage Surface (mm)	Travel Distance (mm)	Travel per Rotation (mm)	Load Capacity (N)	Parallelism (μm)	Weight (kg)	Accessory (4 pcs.)	Unit Price
Type	No.								
ZHRD	30-60	60x60	30	(15) *	68.6	50μm	0.50	SCB4-8	
	30-90	90x90					0.59		
	30-T	-					0.42		

⚠ When elevating the plate with moment load applied to its top face, some play might occur.



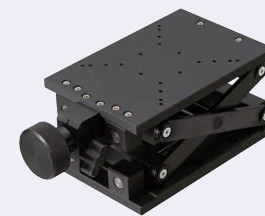
[Standard] Lab Jack Horizontal Surface Z-Axis Stages

P.1977

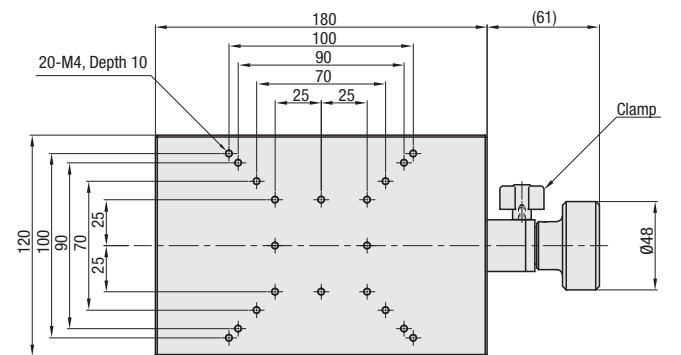
Points on Similar Product Comparison | Parallelism: 400µm

■ **Features:** Suitable for Z-axis applications requiring long stroke adjustments. Differ from the existing products in accuracy range. Existing Products: ZLJG (P.1977)

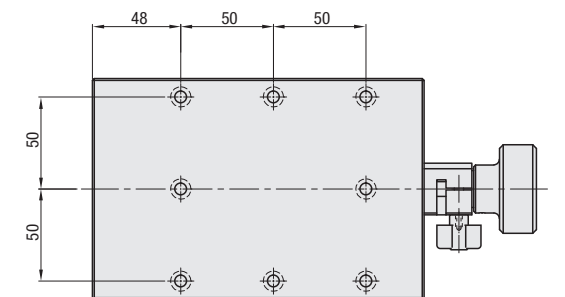
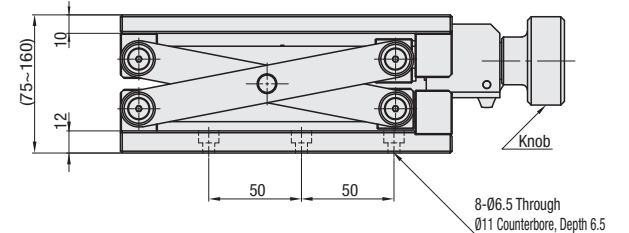
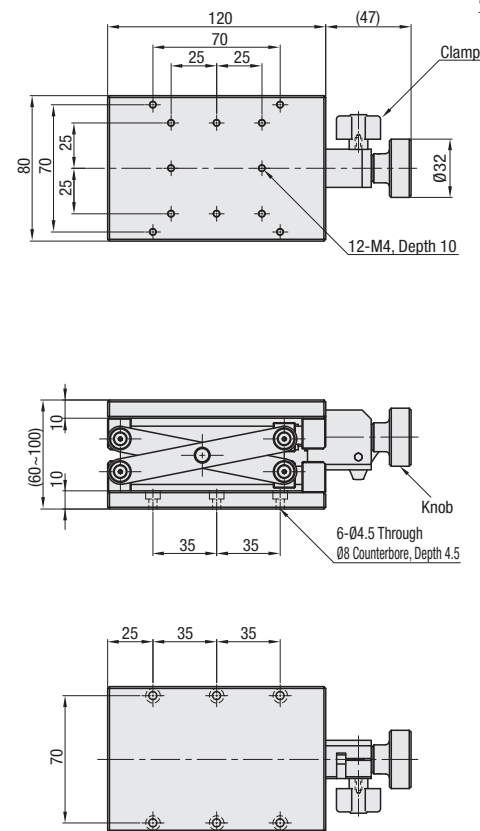
■ Horizontal Surface Z-Axis_Lab Jack



ZLJS120



ZLJS80



- Knob operated elevating table with relatively high load capacity. A split clamp on the operating shaft securely holds the load in position.
- Counterclockwise rotation of the knob elevates the stage surface.
- There is some play in the horizontal direction.

M Material: Aluminum Alloy

M Material: Aluminum Alloy
S Surface Treatment: Black Anodize

Part Number		Stage Surface (mm)	Travel Distance (mm)	Travel per Rotation (mm)	Parallelism (μm)	Load Capacity (N)	Weight (kg)	Unit Price
Type	No.							
ZLJS	80	80x120	40	(2)*	400	68.6	1.25	
	120	120x180	70	(3)*		98	3	

* The travel distance per knob rotation varies to some extent depending on the current table position.

