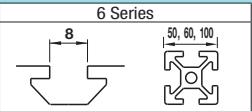


Extruded Brackets - For 2 Slots

For 6 Series (Slot Width 8mm) Aluminum Extrusions



■Features: Extruded Brackets to connect 2-slot extrusions (HFS6-6060, etc.).

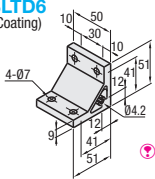
Thick Brackets



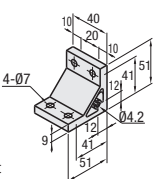
NBLTD6
HBLTD6
HBLTDB6
(Black Anodize)
CHBLTD6
(Clear Coating)

For 50 Sq.
HBLTD6-50

Type	Material	Surface Treatment
NBLTD6	EN AW-6063-T5 Equiv.	Anodize
HBLTD6(-50)		
HBLTDB6		
CHBLTD6	EN AC-51400-T5 Equiv.	Black Anodize Clear Coating Anodize + Clear Paint



Both sides and screw holes of NBLTD6 is not anodized.



Part Number	Mass (g)	Applicable Screw, T Nut	Allowable Load (N)	Unit Price	Volume Discount Rate
		Screw Quantity T Nut Quantity		1-99 pc(s)	100-200
NBLTD6					
HBLTD6					
HBLTDB6* (Black Anodize)	111	CBM6-15 4 HNTT6-6 4	1960		
CHBLTD6 (Clear Coating)					
HBLTD6-50	88				

* For repairing black anodizing, refer to P846.

■Features: Numbers of screws are the same as HBLTD6. Extrusions can be connected more securely.

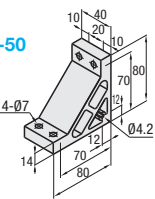
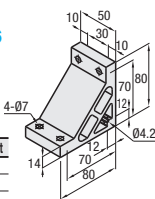
Ultra Thick Brackets



HBLUD6
HBLUDB6
(Black Anodize)

For 50 Sq.
HBLUD6-50

Type	Material	Surface Treatment
HBLUD6	EN AC-51400-T5 Equiv.	Anodize
HBLUDB6		
HBLUD6-50		



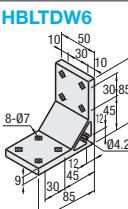
Part Number	Mass (g)	Applicable Screw, T Nut	Allowable Load (N)	Unit Price	Volume Discount Rate
		Screw Quantity T Nut Quantity		1-99 pc(s)	100-200
HBLUD6					
HBLUDB6* (Black Anodize)	256	CBM6-20 4 HNTT6-6 4	1960		
HBLUD6-50	211	CBM6-20			

* For repairing black anodizing, refer to P846.

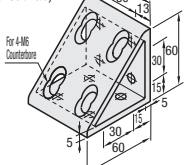
■Features: Brackets for 2-slot extrusions with 4 mounting holes on one side can connect extrusions more securely.

Thick Brackets

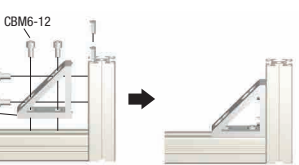
Triangle Brackets



HBLDDW6
(Without Tab)



Example



Material: EN AC-51400-T5 Equiv. Surface Treatment: Anodize

Part Number	Mass (g)	Applicable Screw, T Nut	Allowable Load (N)	Unit Price	Volume Discount Rate
		Screw Quantity T Nut Quantity		1-99 pc(s)	100-200
HBLTDW6	192	CBM6-15 8 HNTT6-6 8	2940		
HBLDDW6	190	CBM6-12 8 HNTT6-6 8	2940		

Ordering Example Part Number HBLTD6

Alterations Part Number - (C, SET, SST, SEU, SSU, SEP, SSP, SEC) HBLTD6 SET

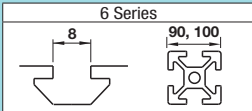
Alterations	Code	Spec.	Applicable Bracket
Mounting Hole Alteration for Cover	C	Adds taps on a bracket for cover mounting. (M5 on Both Sides) (Mounting Screw HCBM on P754)	NBLTD6
			HBLTD6
			CHBLTD6
			HBLTD6-50
			HBLUD6
			HBLUD6-50
			HBLTDW6

Alterations	Code	Spec.	Applicable Bracket																								
Applicable Screws and Nuts Set	SET SST (Stainless Steel) SEU (Pre-Assembly Insertion Spring Nuts) SSU (Pre-Assembly Insertion Spring Nuts Stainless Steel) SEP (Post-Assembly Insertion Spring Nuts) SSP (Post-Assembly Insertion Spring Nuts Stainless Steel) SEC (Screws with Captured Washer and Nuts)	Applicable screws and nuts for fixing the brackets on extrusions come in a set. (Adds to the bracket price.) (Ex.) When HBLTD6 is specified: <table><tr><th>Code</th><th>Screw</th><th>Nut</th></tr><tr><td>SET CBM6-15</td><td>HNTT6-6</td><td></td></tr><tr><td>SST SCB6-15</td><td>HNTTSN6-6</td><td></td></tr><tr><td>SEU CBM6-15</td><td>HNTU6-6</td><td></td></tr><tr><td>SSU SCB6-15</td><td>SHNTU6-6</td><td></td></tr><tr><td>SEP CBM6-15</td><td>HNTTP6-6</td><td></td></tr><tr><td>SSP SCB6-15</td><td>SHNTTP6-6</td><td></td></tr><tr><td>SEC HCBST6-20</td><td>HNTT6-6</td><td></td></tr></table> When specifying other than HBLTD6, check for the applicable screws and nuts.	Code	Screw	Nut	SET CBM6-15	HNTT6-6		SST SCB6-15	HNTTSN6-6		SEU CBM6-15	HNTU6-6		SSU SCB6-15	SHNTU6-6		SEP CBM6-15	HNTTP6-6		SSP SCB6-15	SHNTTP6-6		SEC HCBST6-20	HNTT6-6		NBLTD6 HBLTD6 HBLTDB6 CHBLTD6 HBLTD6-50 HBLUD6 HBLUDB6 HBLUD6-50 HBLTDW6 HBLDDW6
	Code	Screw	Nut																								
	SET CBM6-15	HNTT6-6																									
	SST SCB6-15	HNTTSN6-6																									
	SEU CBM6-15	HNTU6-6																									
	SSU SCB6-15	SHNTU6-6																									
	SEP CBM6-15	HNTTP6-6																									
	SSP SCB6-15	SHNTTP6-6																									
	SEC HCBST6-20	HNTT6-6																									

When specifying other than HBLTD6, check for the applicable screws and nuts.

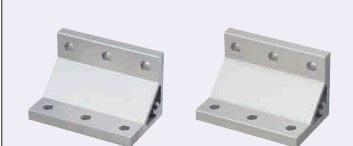
Extruded Brackets - For 3 or More Slots

For 6 Series (Slot Width 8mm) Aluminum Extrusions



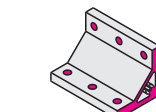
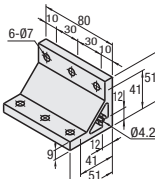
■Features: Extruded Brackets to connect Extrusions with 3 slots (HFS6-3090, etc.) with one bracket.

Thick Brackets



NBLTT6
HBLTT6

Type	Material	Surface Treatment
NBLTT6	EN AW-6063-T5 Equiv.	Anodize
HBLTT6	EN AC-51400-T5 Equiv.	

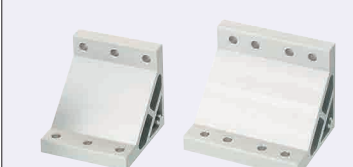


Both sides and screw holes of NBLTT6 is not anodized.

Part Number	Mass (g)	Applicable Screw, T Nut	Allowable Load (N)	Unit Price	Volume Discount Rate
Type		Screw Quantity T Nut Quantity		1-99 pc(s)	100-200
NBLTT6	180	CBM6-15 6 HNTT6-6 6	2744		
HBLTT6					

■Features: Brackets to connect Extrusions with 3 slots and 4 slots (HFS6-3090, 50100 etc.) with one bracket.

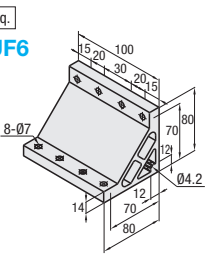
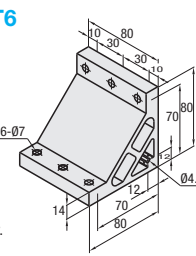
Ultra Thick Brackets



HBLUT6

For 100 Sq.
HBLUF6

Material: EN AC-51400-T5 Equiv. Surface Treatment: Anodize



Part Number	Mass (g)	Applicable Screw, T Nut	Allowable Load (N)	Unit Price	Volume Discount Rate
Type		Screw Quantity T Nut Quantity		1-99 pc(s)	100-200
HBLUT6	409	CBM6-20 6 HNTT6-6 6	2744		
HBLUF6	512	CBM6-20 8 HNTT6-6 8	2940		

■Features: Brackets for 3-slot / 4-slot extrusions with 6 / 8 mounting holes on one side can connect extrusions more securely.

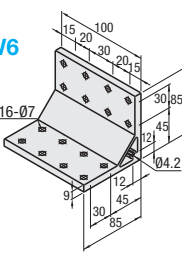
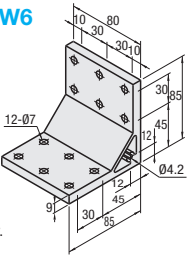
Thick Brackets



HBLTTW6

For 100 Sq.
HBLTFW6

Material: EN AC-51400-T5 Equiv. Surface Treatment: Anodize



Part Number	Mass (g)	Applicable Screw, T Nut	Allowable Load (N)	Unit Price	Volume Discount Rate
Type		Screw Quantity T Nut Quantity		1-99 pc(s)	100-200
HBLTTW6	308	CBM6-15 12 HNTT6-6 12	4116		
HBLTFW6	384	CBM6-15 16 HNTT6-6 16	4410		

Ordering Example Part Number HBLTT6

Alterations Part Number - (C, SET, SST, SEU, SSU, SEP, SSP, SEC) HBLTT6 SET

Alterations	Code	Spec.	Applicable Bracket
Mounting Hole Alteration for Cover	C	Adds taps on a bracket for cover mounting. (M5 on Both Sides, Depth 15mm) (Mounting Screw HCBM on P754)	HBLTT6
			HBLUF6
			HBLTTW6
			HBLTFW6

Alterations	Code	Spec.	Applicable Bracket																								
Applicable Screws and Nuts Set	SET SST (Stainless Steel) SEU (Pre-Assembly Insertion Spring Nuts) SSU (Pre-Assembly Insertion Spring Nuts Stainless Steel) SEP (Post-Assembly Insertion Spring Nuts) SSP (Post-Assembly Insertion Spring Nuts Stainless Steel) SEC (Screws with Captured Washer and Nuts)	Applicable screws and nuts for fixing the brackets on extrusions come in a set. (Adds to the bracket price) (Ex.) When HBLTT6 is specified: <table><tr><th>Code</th><th>Screw</th><th>Nut</th></tr><tr><td>SET CBM6-15</td><td>HNTT6-6</td><td></td></tr><tr><td>SST SCB6-15</td><td>HNTTSN6-6</td><td></td></tr><tr><td>SEU CBM6-15</td><td>HNTU6-6</td><td></td></tr><tr><td>SSU SCB6-15</td><td>SHNTU6-6</td><td></td></tr><tr><td>SEP CBM6-15</td><td>HNTTP6-6</td><td></td></tr><tr><td>SSP SCB6-15</td><td>SHNTTP6-6</td><td></td></tr><tr><td>SEC HCBST6-20</td><td>HNTT6-6</td><td></td></tr></table> ⚠ When specifying other than HBLTT6, check for the applicable screws and nuts.	Code	Screw	Nut	SET CBM6-15	HNTT6-6		SST SCB6-15	HNTTSN6-6		SEU CBM6-15	HNTU6-6		SSU SCB6-15	SHNTU6-6		SEP CBM6-15	HNTTP6-6		SSP SCB6-15	SHNTTP6-6		SEC HCBST6-20	HNTT6-6		NBLTT6 HBLTT6 HBLUT6 HBLUF6 HBLTTW6 HBLTFW6
	Code	Screw	Nut																								
	SET CBM6-15	HNTT6-6																									
	SST SCB6-15	HNTTSN6-6																									
	SEU CBM6-15	HNTU6-6																									
	SSU SCB6-15	SHNTU6-6																									
	SEP CBM6-15	HNTTP6-6																									
	SSP SCB6-15	SHNTTP6-6																									
	SEC HCBST6-20	HNTT6-6																									

Included Screw is not RoHS compliant when -SET, -SEU or -SEP are specified.