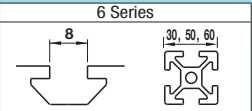


Angled Brackets

For 6 Series (Slot Width 8mm) Aluminum Extrusions



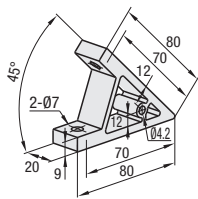
■Features: Extruded Brackets to connect extrusions at angles.

Angled Brackets

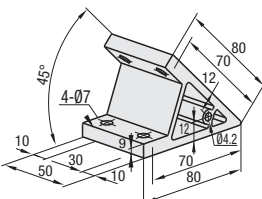


Material: EN AC-51400-T5 Equiv.
Surface Treatment: Anodize

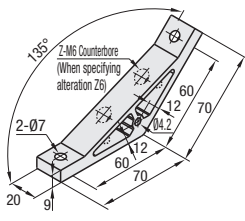
HBL45TS6



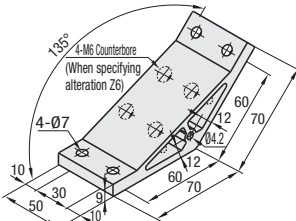
HBL45TD6



HBL135TS6



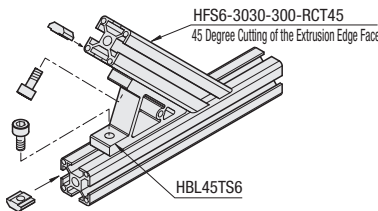
HBL135TD6



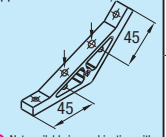
Part Number	Mass (g)	Applicable Screw, T Nut		Allowable Load (N)	Unit Price	Volume Discount Rate
		Screw	T Nut			
HBL45TS6	58	CBM6-15	HNTT6-6	2	1176	100-200
HBL45TD6	147			4	1960	
HBL135TS6	68			2	1176	
HBL135TD6	172			4	1960	

Ordering Example
Part Number
HBL45TS6

Example



Alterations
Part Number
HBL45TS6 - (C, SET, SST, SEU, SSU, SEP, SSP, Z6)
SET

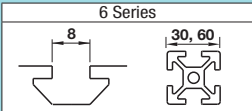
Alterations	Code	Spec.	Applicable Bracket
Mounting Hole Alteration for Cover	C	Adds taps on a bracket for cover mounting. (M5 on Both Sides, Depth 15mm) (Mounting Screw HCBM on P.754)	HBL45TS6 HBL45TD6 HBL135TS6 HBL135TD6
Counterbored Holes on 135 Degree Bracket	Z6	135 Degree Bracket Adds two counterbored holes on HBL135T□□6. (Applicable Screw: M6)  ⊗ Not available in combination with Applicable Screws and Nuts.	HBL135TS6 HBL135TD6

Alterations	Code	Spec.	Applicable Bracket		
Applicable Screws and Nuts Set	SET SST (Stainless Steel) SEU	Applicable screws and nuts for fixing the brackets on extrusions can in a set. (Adds to the bracket price)	HBL45TS6		
	(Pre-Assembly Insertion Spring Nuts SSU		HBL45TD6		
	(Pre-Assembly Insertion Spring Nuts Stainless Steel SEP	Applicable Screws and Nuts Set	HBL135TS6		
	(Post-Assembly Insertion Spring Nuts SSP		HBL135TD6		
	(Post-Assembly Insertion Spring Nuts Stainless Steel				
		Code	Screw	Nut	
		SET	CBM6-15	HNTT6-6	
	SST	SCB6-15	HNTTSN6-6		
	SEU	CBM6-15	HNTU6-6		
	SSU	SCB6-15	SHNTU6-6		
	SEP	CBM6-15	HNTT6-6		
	SSP	SCB6-15	SHNTT6-6		
	🔩 When specifying other than HBL45TS6, check for the applicable screws and nuts.				

⚡ Included Screw is not RoHS compliant when -SET, -SEU or -SEP are specified.

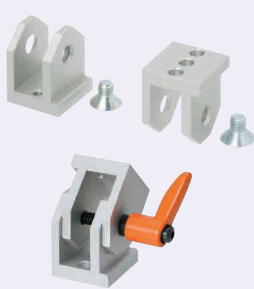
Free Angle Brackets

For 6 Series (Slot Width 8mm) Aluminum Extrusions



■Features: Extrusions can be connected at any arbitrary angles.

Free Angle Brackets



Type	Material	Surface Treatment
HBLTBA30 HBLTBBN30 HBLTBC30 HBLTBD30	EN AC-51400-T5 Equiv.	Anodize
Included Screw	EN 1.7220 Equiv.	Trivalent Chromate

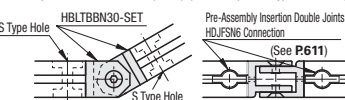
Part Number	Applicable Extrusion	Mass (g)	Accessory	Quantity	Unit Price	Volume Discount Rate
HBLTBA30 HBLTBBN30 HBLTBC30 HBLTBD30	30 Square (HFS6)	33 35 86 88	M8x12 CLDMC6-32-M	1		15-50

Ordering Example
Part Number
HBLTBA30

Example

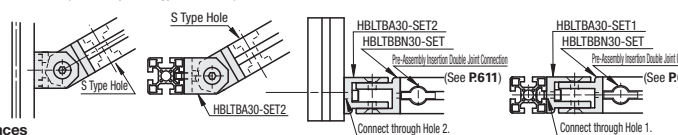
(1) Connection of Two End Sections

Two pieces of HBLTBBN are used to connect two end sections using Pre-Assembly Insertion Double Joints (P.611). (With Clamp Lever Type: HBLTBD30)



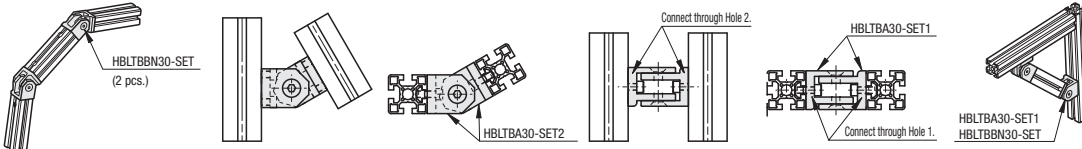
(2) Connection of Two Side Faces

To the extrusion side face, connect with HBLTBA, a screw and a nut. To the end face, use 1 HBLTBBN for 1 HBLTBA using Pre-Assembly Insertion Double Joint. (With Clamp Lever Type: HBLTBC30)



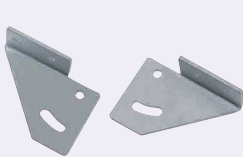
(3) Connection of Two Side Faces

Two pieces of HBLTBA are used to connect them with extrusion side using screws and nuts.



■Features: Sheet Metal Brackets to fix at arbitrary positions.

Free Angle Sheet Metal Brackets



Material: EN 1.0330 Equiv.
Surface Treatment: Trivalent Chromate

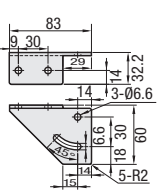
RoHS 10

Part Number	Applicable Extrusion	Applicable Screw and Nut	Unit Price	Volume Discount Rate
HBLPBL HBLPBR	6	30 Square (HFS6) CBST6-12 HNTT6-6	4	100-150

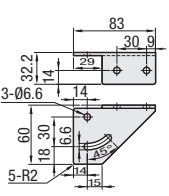
Example



HBLPBL6



HBLPBR6



Alterations
Part Number
HBLPBL6 - SET

Alterations	Code	Spec.	Applicable Bracket
Applicable Screws and Nuts Set	SET	Supplies a set of applicable screws and nuts for fixing the bracket to an extrusion.	HBLPBL6 HBLPBR6
Set with applicable screws, nuts and clamp levers.	SET1	Applicable Screw: 3 pcs. Clamp Lever (LNP): 1 pc. Flat Washer (PWF): 1 pc. Applicable Nut: 4 pcs. Set with the above items.	HBLPBL6 HBLPBR6