

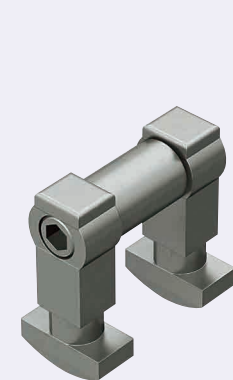
Blind Joint Components

Post Assembly Insertion Double Joint Kits for 6 Series (Slot Width 8mm) Aluminum Extrusions

Alterations necessary to use this component

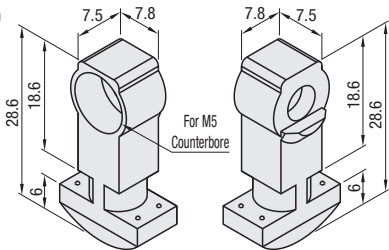
M Type Hole Alterations
P.766

Post Assembly Insertion Double Joint Kit

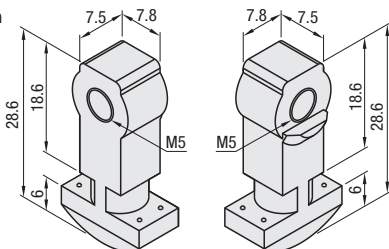


HPJN (Post-Assembly Insertion Double Joint)

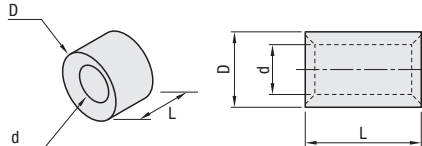
① Post-Assembly Insertion Double Joint A



② Post-Assembly Insertion Double Joint B



③ Joint Pipe



Part Name		Material
Post-Assembly Insertion Double Joint (A, B)		EN 1.4308 Equiv.
Joint Pipe	No.6-30	EN 1.4301 Equiv. (Sintered)
	No.6-50	
	No.6-90	
	No.6-100	
	No.6-120	
Hex Socket Head Cap Screw		EN 1.4301 Equiv.

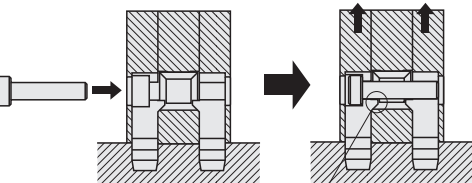
RoHS10

Part Number		Accessory							Unit Price	Volume Discount Rate	
Type	No.	① Post-Assembly Insertion Double Joint A	Quantity	② Post-Assembly Insertion Double Joint B	Quantity	③ Joint Pipe	Quantity	④ Hex Socket Head Cap Screw	Quantity	1 ~ 19 pcs	20 ~ 200
HPJN	6-30	Post-Assembly Insertion Double Joint A6	1	Post-Assembly Insertion Double Joint B6	1	Joint Pipe 6-30	1	M5x22	1		
	6-60					Joint Pipe 6-60		M5x50			
	6-50					Joint Pipe 6-50		M5x40			
	6-90					Joint Pipe 6-90		M5x80			
	6-100					Joint Pipe 6-100		M5x90			
	6-120					Joint Pipe 6-120		M5x110			

③ Joint Pipe

Part Name	L	D	d
Joint Pipe 6-30	12	11	7
Joint Pipe 6-60	42		
Joint Pipe 6-50	32		
Joint Pipe 6-90	72		
Joint Pipe 6-100	82		
Joint Pipe 6-120	102		

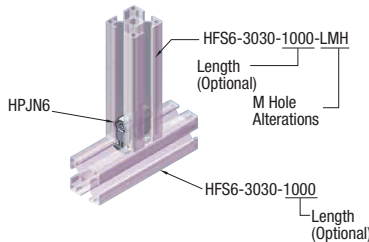
Post Assy. Insert. Double Joint Kit	Applicable Extrusion No.	[Exception] Extrusion Not Available
HPJN6-30	6-3030	Not usable for surfaces without slots.
HPJN6-60	6-3060 6-6060	
HPJN6-50	6-5050 6-50100	
HPJN6-90	6-3090 6-6090	
HPJN6-100	6-50100 6-100100	
HPJN6-120	6-30120 6-60120	



The tapered part of a Joint Pipe and the tab of a post-assembly insertion joint create upward lifting force, connecting the extrusions together.

Example

Installation Example



ex

Example

Pre-Assembly Insertion Double Joint Connection (Connect the extrusion at the corners or the center.)

Step	Front View	Side View	Post-Assembly Insertion Double Joint	Specification Method by Part Number (30 Square as an Example)
1				① HFS6-3030-1000-LMH ② HFS6-3030-1000 A Post-Assembly Insertion Double Joint A B Post-Assembly Insertion Double Joint B C Joint Pipe
2				
3				Hex Wrench When tightening the hex socket head cap screw, pulling force works as illustrated above, and connects two extrusions.
4				App. Example of Rectangle Shape Extrusion
5				For extrusions with three slots, M holes cannot be drilled on the center one. (For description of M hole, refer to P.766)
6				Ex.) HFS6-3090-1000-LMH