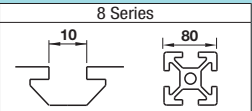


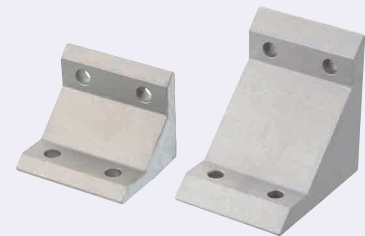
Tabbed Brackets - For 2 Slots

For 8 Series (Slot Width 10mm) Aluminum Extrusions

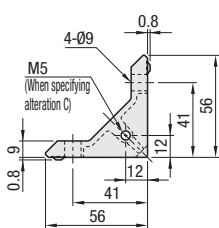
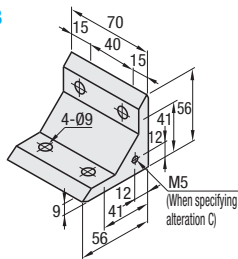


■ **Features:** Tabbed Brackets for 2-slot extrusions. Since the tabs stop rotating the brackets when tightening, work efficiency is improved.

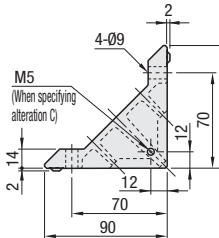
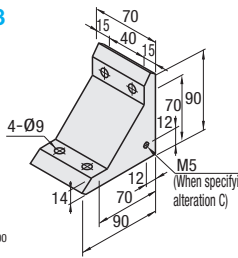
■ Tabbed Brackets



HBLFTD8



HBLFUD8



Material: EN AC-46100 Equiv.

Part Number	Mass (g)	Applicable Screw	T Nut	Allowable Load (N)	Unit Price 1~99 pc(s).	Volume Discount Rate 100~200
Type		Screw	Quantity	Quantity		
HBLFTD8	140	CBM8-20	4	HNTT8-8	4	3087
HBLFUD8	370	CBM8-25	4	HNTT8-8	4	3920



Example Can be connected in parallel and perpendicular directions to the extrusion slot.

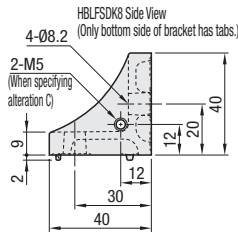
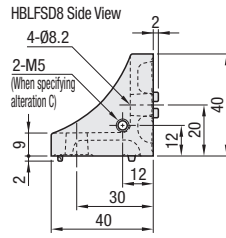
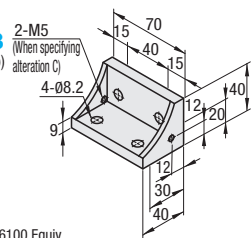


■ **Features:** Extrusions with 2 slots (HFS8-8080, etc.) can be connected with one bracket.

■ Tabbed Reversal Brackets



HBLFSD8 HBLFSDK8 (with Single Side Tab)



Material: EN AC-46100 Equiv.

Part Number	Mass (g)	Applicable Screw	T Nut	Allowable Load (N)	Unit Price 1~99 pc(s).	Volume Discount Rate 100~200
Type		Screw	Quantity	Quantity		
HBLFSD8	89	CBM8-20	4	HNTT8-8	4	3087
HBLFSDK8						



Ordering Example
Part Number
HBLFSD8

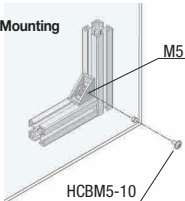


Alterations Part Number - (C, SET, SST, SEU, SSU, SEP, SSP, SEC)
HBLFSD8 - SET

Alterations	Code	Spec.	Applicable Bracket
Mounting Hole Alteration for Cover	C	Adds taps on a bracket for cover mounting. (M5 on Both Sides) (Mounting Screw HCBM on P754)	HBLFTD8
			HBLFUD8
			HBLFSD8
			HBLFSDK8



Example ■ Example of Cover Mounting
Specify alteration code C.

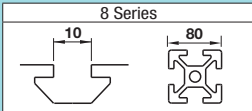


Alterations	Code	Spec.	Applicable Bracket																								
Applicable Screws and Nuts Set	SET SST (Stainless Steel) SEU (Pre-Assembly Insertion) Spring Nuts SSU (Pre-Assembly Insertion) Spring Nuts SEP (Post-Assembly Insertion) Spring Nuts SSP (Post-Assembly Insertion) Spring Nuts SEC (Screws with Captured Washer and Nuts)	Applicable screws and nuts for fixing the brackets on extrusions come in a set. (Adds to the bracket price.) (Ex.) When HBLFSD8 is specified: <table><tr><th>Code</th><th>Screw</th><th>Nut</th></tr><tr><td>SET</td><td>CBM8-20</td><td>HNTT8-8</td></tr><tr><td>SST</td><td>SCB8-20</td><td>HNTT8-8</td></tr><tr><td>SEU</td><td>CBM8-20</td><td>HNTU8-8</td></tr><tr><td>SSU</td><td>SCB8-20</td><td>SHNTU8-8</td></tr><tr><td>SEP</td><td>CBM8-20</td><td>HNTTP8-8</td></tr><tr><td>SSP</td><td>SCB8-20</td><td>SHNTTP8-8</td></tr><tr><td>SEC</td><td>HCBST8-24</td><td>HNTT8-8</td></tr></table>	Code	Screw	Nut	SET	CBM8-20	HNTT8-8	SST	SCB8-20	HNTT8-8	SEU	CBM8-20	HNTU8-8	SSU	SCB8-20	SHNTU8-8	SEP	CBM8-20	HNTTP8-8	SSP	SCB8-20	SHNTTP8-8	SEC	HCBST8-24	HNTT8-8	HBLFTD8
	Code	Screw	Nut																								
	SET	CBM8-20	HNTT8-8																								
	SST	SCB8-20	HNTT8-8																								
	SEU	CBM8-20	HNTU8-8																								
	SSU	SCB8-20	SHNTU8-8																								
	SEP	CBM8-20	HNTTP8-8																								
	SSP	SCB8-20	SHNTTP8-8																								
	SEC	HCBST8-24	HNTT8-8																								
		⚠ When specifying other than HBLFSD8, check for the applicable screws and nuts.	HBLFUD8																								
		HBLFSD8																									
		HBLFSDK8																									

⚠ Included Screw is not RoHS compliant when -SET, -SEU or -SEP are specified.

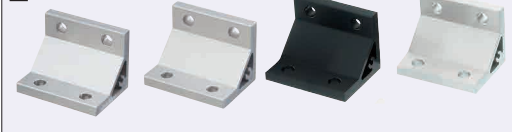
Extruded Brackets - For 2 Slots

For 8 Series (Slot Width 10mm) Aluminum Extrusions



■ **Features:** Brackets to connect Extrusions with 2 slots (HFS8-8080 etc.) with one bracket.

■ Thick Brackets



Part Number	Mass (g)	Applicable Screw	T Nut	Allowable Load (N)	Unit Price 1~99 pc(s).	Volume Discount Rate 100~200
Type		Screw	Quantity	Quantity		
NBLTD8	154	CBM8-20	4	HNTT8-8	4	3087
HBLTD8						
HBLTDB8* (Black Anodize)						
CHBLTD8 (Clear Coating)						

* For repairing black anodizing, refer to P846.

■ **Features:** Numbers of screws are the same as HBLTD8. Extrusions can be connected more securely.

■ Ultra Thick Brackets



Part Number	Mass (g)	Applicable Screw	T Nut	Allowable Load (N)	Unit Price 1~99 pc(s).	Volume Discount Rate 100~200
Type		Screw	Quantity	Quantity		
HBLUD8	380	CBM8-25	4	HNTT8-8	4	3920

■ **Features:** Brackets for 2-slot extrusions with 4 mounting holes on one side can connect extrusions more securely.

■ Thick Brackets



Part Number	Mass (g)	Applicable Screw	T Nut	Allowable Load (N)	Unit Price 1~99 pc(s).	Volume Discount Rate 100~200
Type		Screw	Quantity	Quantity		
HBLTDW8	267	CBM8-20	8	HNTT8-8	8	4410

■ **Features:** Numbers of screws are the same as HBLTDW8. Extrusions can be connected more securely.

■ Ultra Thick Brackets



Part Number	Mass (g)	Applicable Screw	T Nut	Allowable Load (N)	Unit Price 1~99 pc(s).	Volume Discount Rate 100~200
Type		Screw	Quantity	Quantity		
NBLUDW8	332	CBM8-15	4	HNTT8-8	8	5586
HBLUDW8	332	CBM8-15	4	HNTT8-8	8	5586

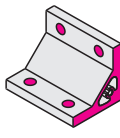
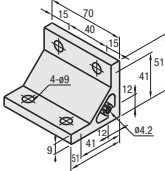
Part Number
HBLTD8

Alterations Part Number - (C, SET, SST, SEU, SSU, SEP, SSP, SEC)
HBLTD8 - SET

Alterations	Code	Spec.	Applicable Bracket
Mounting Hole Alteration for Cover	C	Adds taps on a bracket for cover mounting. (M5 on Both Sides, Depth 15mm) (Mounting Screw HCBM on P754)	NBLTD8
			HBLTD8
			CHBLTD8
			HBLTDW8 HBLUD8 NBLUDW8 HBLUDW8

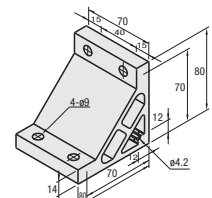
NBLTD8 HBLTD8 HBLTDB8 (Black Anodize) CHBLTD8 (Clear Coating)

Type	Material	Surface Treatment
NBLTD8	EN AW-6063-T5 Equiv.	Anodize
HBLTD8		
HBLTDB8	EN AC-51400-T5 Equiv.	Black Anodize
CHBLTD8		Anodize



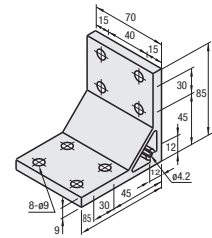
⚠ Both sides and screw holes of NBLTD8 is not anodized.

HBLUD8



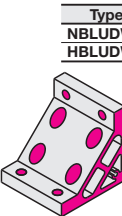
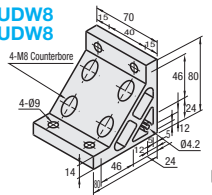
Material: EN AC-51400-T5 Equiv.
Surface Treatment: Anodize

HBLTDW8



Material: EN AC-51400-T5 Equiv.
Surface Treatment: Anodize

NBLUDW8 HBLUDW8



⚠ Both sides and screw holes of NBLUDW8 is not anodized.

Alterations	Code	Spec.	Applicable Bracket
Applicable Screws and Nuts Set	SET SST (Stainless Steel) SEU (Pre-Assembly Insertion Spring Nuts) SSU (Pre-Assembly Insertion Spring Nuts Stainless Steel) SEP (Post-Assembly Insertion Spring Nuts) SSP (Post-Assembly Insertion Spring Nuts Stainless Steel) SEC (Screws with Captured Washer and Nuts)	Applicable screws and nuts for fixing the brackets on extrusions come in a set. (Adds to the bracket price.) (Ex.) When HBLTD8 is specified: Code Screw Nut SET CBM8-20 HNTT8-8 SST SCB8-20 HNTTSN-8 SEU CBM8-20 HNTU8-8 SSU SCB8-20 SHNTU8-8 SEP CBM8-20 HNTTP8-8 SSP SCB8-20 SHNTTP8-8 SEC HCBST8-24 HNTT8-8 ⚠ When specifying other than HBLTD8, check for the applicable screws and nuts.	NBLTD8 HBLTD8 HBLTDB8 CHBLTD8 HBLTDW8 HBLUD8 HBLUDW8

⚠ Screws for black anodized brackets are HCBMTB (Trivalent Chromate Black) on P751.

⚠ Included Screw is not RoHS compliant when -SET, -SEU or -SEP other than black anodized brackets is specified.