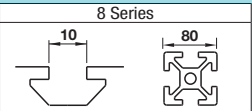


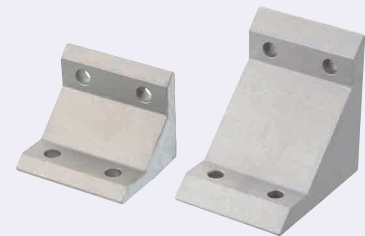
Tabbed Brackets - For 2 Slots

For 8 Series (Slot Width 10mm) Aluminum Extrusions

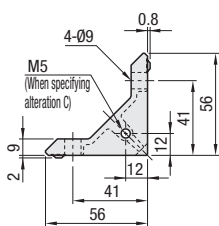
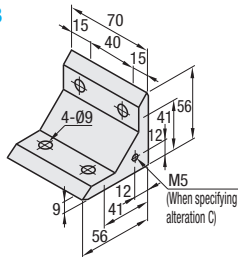


■ **Features:** Tabbed Brackets for 2-slot extrusions. Since the tabs stop rotating the brackets when tightening, work efficiency is improved.

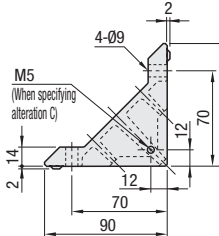
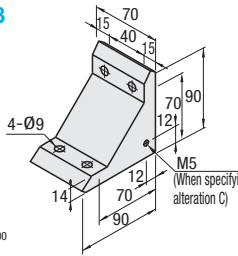
■ Tabbed Brackets



HBLFTD8



HBLFUD8



Material: EN AC-46100 Equiv.

Part Number	Mass (g)	Applicable Screw	T Nut	Allowable Load (N)	Unit Price 1~99 pc(s).	Volume Discount Rate 100~200
Type	Screw	Quantity	T Nut	Quantity		
HBLFTD8	CBM8-20	4	HNTT8-8	4	3087	
HBLFUD8	CBM8-25	4	HNTT8-8	4	3920	



Example Can be connected in parallel and perpendicular directions to the extrusion slot.

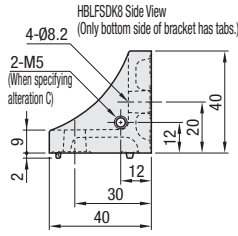
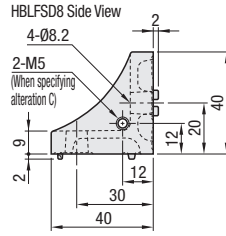
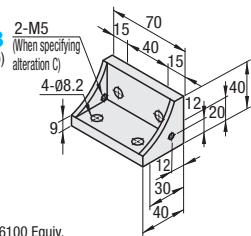


■ **Features:** Extrusions with 2 slots (HFS8-8080, etc.) can be connected with one bracket.

■ Tabbed Reversal Brackets



HBLFSD8 HBLFSDK8 (with Single Side Tab)



Material: EN AC-46100 Equiv.

Part Number	Mass (g)	Applicable Screw	T Nut	Allowable Load (N)	Unit Price 1~99 pc(s).	Volume Discount Rate 100~200
Type	Screw	Quantity	T Nut	Quantity		
HBLFSD8	CBM8-20	4	HNTT8-8	4	3087	
HBLFSDK8	CBM8-25	4	HNTT8-8	4	3920	



Ordering Example Part Number HBLFSD8

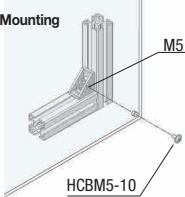


Alterations Part Number - (C, SET, SST, SEU, SSU, SEP, SSP, SEC) HBLFSD8 - SET

Alterations	Code	Spec.	Applicable Bracket
Mounting Hole Alteration for Cover	C	Adds taps on a bracket for cover mounting. (M5 on Both Sides) (Mounting Screw HCBM on P754)	HBLFTD8
			HBLFUD8
			HBLFSD8
			HBLFSDK8



Example ■ Example of Cover Mounting •Specify alteration code C.

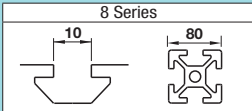


Alterations	Code	Spec.	Applicable Bracket																								
Applicable Screws and Nuts Set	SET SST (Stainless Steel) SEU (Pre-Assembly Insertion) Spring Nuts SSU (Pre-Assembly Insertion) Spring Nuts SEP (Post-Assembly Insertion) Spring Nuts SSP (Post-Assembly Insertion) Spring Nuts SEC (Screws with Captured Washer and Nuts)	Applicable screws and nuts for fixing the brackets on extrusions come in a set. (Adds to the bracket price.) (Ex.) When HBLFSD8 is specified: <table><tr><th>Code</th><th>Screw</th><th>Nut</th></tr><tr><td>SET</td><td>CBM8-20</td><td>HNTT8-8</td></tr><tr><td>SST</td><td>SCB8-20</td><td>HNTTSM8-8</td></tr><tr><td>SEU</td><td>CBM8-20</td><td>HNTU8-8</td></tr><tr><td>SSU</td><td>SCB8-20</td><td>SHNTU8-8</td></tr><tr><td>SEP</td><td>CBM8-20</td><td>HNTTP8-8</td></tr><tr><td>SSP</td><td>SCB8-20</td><td>SHNTP8-8</td></tr><tr><td>SEC</td><td>HCB8T8-24</td><td>HNTT8-8</td></tr></table>	Code	Screw	Nut	SET	CBM8-20	HNTT8-8	SST	SCB8-20	HNTTSM8-8	SEU	CBM8-20	HNTU8-8	SSU	SCB8-20	SHNTU8-8	SEP	CBM8-20	HNTTP8-8	SSP	SCB8-20	SHNTP8-8	SEC	HCB8T8-24	HNTT8-8	HBLFTD8
	Code	Screw	Nut																								
	SET	CBM8-20	HNTT8-8																								
	SST	SCB8-20	HNTTSM8-8																								
	SEU	CBM8-20	HNTU8-8																								
	SSU	SCB8-20	SHNTU8-8																								
	SEP	CBM8-20	HNTTP8-8																								
	SSP	SCB8-20	SHNTP8-8																								
	SEC	HCB8T8-24	HNTT8-8																								
		⚠ When specifying other than HBLFSD8, check for the applicable screws and nuts.	HBLFUD8																								
		HBLFSD8																									
		HBLFSDK8																									

⚠ Included Screw is not RoHS compliant when -SET, -SEU or -SEP are specified.

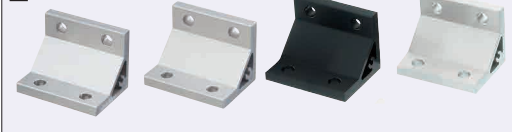
Extruded Brackets - For 2 Slots

For 8 Series (Slot Width 10mm) Aluminum Extrusions



■ **Features:** Brackets to connect Extrusions with 2 slots (HFS8-8080 etc.) with one bracket.

■ Thick Brackets



Part Number	Mass (g)	Applicable Screw	T Nut	Allowable Load (N)	Unit Price 1~99 pc(s).	Volume Discount Rate 100~200
Type	Screw	Quantity	T Nut	Quantity		
NBLTD8	CBM8-20	4	HNTT8-8	4	3087	
HBLTD8	CBM8-20	4	HNTT8-8	4	3087	
HBLTDB8* (Black Anodize)	CBM8-20	4	HNTT8-8	4	3087	
CHBLTD8 (Clear Coating)	CBM8-20	4	HNTT8-8	4	3087	

* For repairing black anodizing, refer to P846.

■ **Features:** Numbers of screws are the same as HBLTD8. Extrusions can be connected more securely.

■ Ultra Thick Brackets



Part Number	Mass (g)	Applicable Screw	T Nut	Allowable Load (N)	Unit Price 1~99 pc(s).	Volume Discount Rate 100~200
Type	Screw	Quantity	T Nut	Quantity		
HBLUD8	CBM8-25	4	HNTT8-8	4	3920	

■ **Features:** Brackets for 2-slot extrusions with 4 mounting holes on one side can connect extrusions more securely.

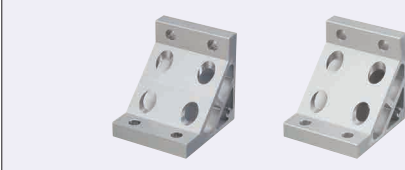
■ Thick Brackets



Part Number	Mass (g)	Applicable Screw	T Nut	Allowable Load (N)	Unit Price 1~99 pc(s).	Volume Discount Rate 100~200
Type	Screw	Quantity	T Nut	Quantity		
HBLTDW8	CBM8-20	8	HNTT8-8	8	4410	

■ **Features:** Numbers of screws are the same as HBLTDW8. Extrusions can be connected more securely.

■ Ultra Thick Brackets



Part Number	Mass (g)	Applicable Screw	T Nut	Allowable Load (N)	Unit Price 1~99 pc(s).	Volume Discount Rate 100~200
Type	Screw	Quantity	T Nut	Quantity		
NBLUDW8	CBM8-15	4	HNTT8-8	8	5586	
HBLUDW8	CBM8-15	4	HNTT8-8	8	5586	



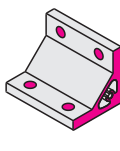
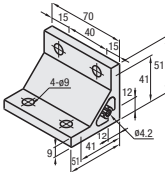
Part Number HBLTD8



Alterations Part Number - (C, SET, SST, SEU, SSU, SEP, SSP, SEC) HBLTD8 - SET

Alterations	Code	Spec.	Applicable Bracket
Mounting Hole Alteration for Cover	C	Adds taps on a bracket for cover mounting. (M5 on Both Sides, Depth 15mm) (Mounting Screw HCBM on P754)	NBLTD8
			HBLTD8
			CHBLTD8
			HBLTDW8
			HBLUD8

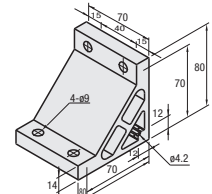
NBLTD8 HBLTD8 HBLTDB8 (Black Anodize) CHBLTD8 (Clear Coating)



⚠ Both sides and screw holes of NBLTD8 is not anodized.

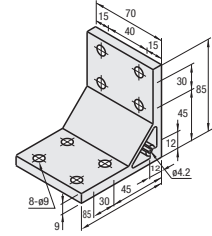
Type	Material	Surface Treatment
NBLTD8	EN AW-6063-T5 Equiv.	Anodize
HBLTD8	EN AC-51400-T5 Equiv.	Black Anodize
HBLTDB8	EN AC-51400-T5 Equiv.	Black Anodize
CHBLTD8	EN AC-51400-T5 Equiv.	Anodize

HBLUD8



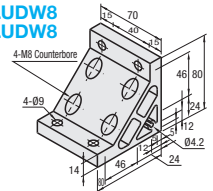
Material: EN AC-51400-T5 Equiv.
Surface Treatment: Anodize

HBLTDW8



Material: EN AC-51400-T5 Equiv.
Surface Treatment: Anodize

NBLUDW8 HBLUDW8



⚠ Both sides and screw holes of NBLUDW8 is not anodized.

Type	Material	Surface Treatment
NBLUDW8	EN AW-6063-T5 Equiv.	Anodize
HBLUDW8	EN AC-51400-T5 Equiv.	Anodize

Alterations	Code	Spec.	Applicable Bracket																								
Applicable Screws and Nuts Set	SET SST (Stainless Steel) SEU (Pre-Assembly Insertion Spring Nuts) SSU (Pre-Assembly Insertion Spring Nuts Stainless Steel) SEP (Post-Assembly Insertion Spring Nuts) SSP (Post-Assembly Insertion Spring Nuts Stainless Steel) SEC (Screws with Captured Washer and Nuts)	Applicable screws and nuts for fixing the brackets on extrusions come in a set. (Adds to the bracket price.) (Ex.) When HBLTD8 is specified: <table><tr><td>Code</td><td>Screw</td><td>Nut</td></tr><tr><td>SET</td><td>CBM8-20</td><td>HNTT8-8</td></tr><tr><td>SST</td><td>SCB8-20</td><td>HNTTSN8-8</td></tr><tr><td>SEU</td><td>CBM8-20</td><td>HNTU8-8</td></tr><tr><td>SSU</td><td>SCB8-20</td><td>SHNTU8-8</td></tr><tr><td>SEP</td><td>CBM8-20</td><td>HNTTP8-8</td></tr><tr><td>SSP</td><td>SCB8-20</td><td>SHNTP8-8</td></tr><tr><td>SEC</td><td>HCB8T8-24</td><td>HNTT8-8</td></tr></table> ⚠ When specifying other than HBLTD8, check for the applicable screws and nuts.	Code	Screw	Nut	SET	CBM8-20	HNTT8-8	SST	SCB8-20	HNTTSN8-8	SEU	CBM8-20	HNTU8-8	SSU	SCB8-20	SHNTU8-8	SEP	CBM8-20	HNTTP8-8	SSP	SCB8-20	SHNTP8-8	SEC	HCB8T8-24	HNTT8-8	NBLTD8 HBLTD8 HBLTDB8 CHBLTD8 HBLTDW8 HBLUD8 HBLUDW8
	Code	Screw	Nut																								
	SET	CBM8-20	HNTT8-8																								
	SST	SCB8-20	HNTTSN8-8																								
	SEU	CBM8-20	HNTU8-8																								
	SSU	SCB8-20	SHNTU8-8																								
	SEP	CBM8-20	HNTTP8-8																								
	SSP	SCB8-20	SHNTP8-8																								
	SEC	HCB8T8-24	HNTT8-8																								

⚠ Screws for black anodized brackets are HCBMTB (Trivalent Chromate Black) on P751.

⚠ Included Screw is not RoHS compliant when -SET, -SEU or -SEP other than black anodized brackets is specified.