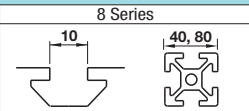


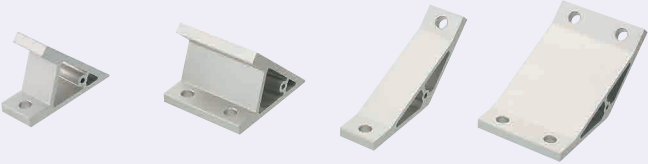
# Angled Brackets

For 8 Series (Slot Width 10mm) Aluminum Extrusions



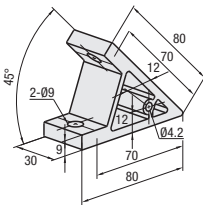
■ **Features:** Extruded Brackets to connect extrusions at angles.

## ■ Angled Brackets

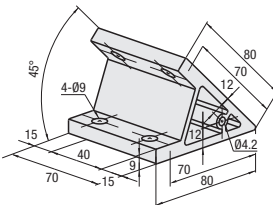


Type	Material	Surface Treatment
HBL45T□8	EN AC-51400-T5 Equiv.	Anodize
HBL135T□8		

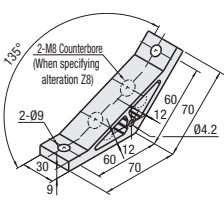
HBL45TS8



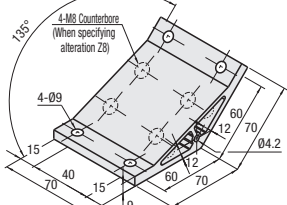
HBL45TD8



HBL135TS8



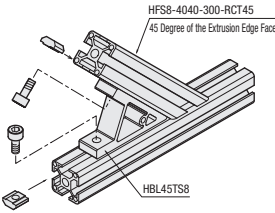
HBL135TD8



Part Number	Mass (g)	Applicable Screw, T Nut	Allowable Load (N)	Unit Price	Volume Discount Rate
HBL45TS8	88	2	2058	1-99 pc(s)	100-200
HBL45TD8	204	4	2940		
HBL135TS8	103	2	2058		
HBL135TD8	240	4	2940		

Ordering Example **Part Number**  
HBL45TS8

Example



Alterations **Part Number** - (C, SET, SST, SEU, SSU, SEP, SSP, Z8)  
HBL45TS8 - SET

Alterations	Code	Spec.	Applicable Bracket
Mounting Hole Alteration for Cover	C	Adds taps on a bracket for cover mounting. (M5 on Both Sides, Depth 15mm) (Mounting Screw HCBM on P.754)	HBL45TS8 HBL135TS8
Counterbored Holes on 135 Degree Bracket	Z8	135 Degree Bracket Adds two counterbored holes on HBL135T□8. (Applicable Screws: M8)	HBL135TS8 HBL135TD8

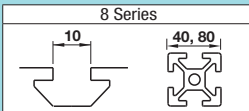
Alterations	Code	Spec.	Applicable Bracket
Applicable Screws and Nuts Set	SET SST (Stainless Steel)	Applicable screws and nuts for fixing the brackets on extrusions come in a set. (Adds to the bracket price.) (Ex.) When HBL45TS8 is specified:	HBL45TS8
	SEU (Pre-Assembly Insertion Spring Nuts)	CODE   Screw   Nut	
	SSU (Pre-Assembly Insertion Spring Nuts Stainless Steel)	SET   CBM8-20   HNTT8-8	HBL45TD8
	SEP (Post-Assembly Insertion Spring Nuts)	SST   SC88-20   HNTTSN8-8	
	SSP (Post-Assembly Insertion Spring Nuts Stainless Steel)	SEU   CBM8-20   HNTU8-8	

⚡ When specifying other than HBL45TS8, check for the applicable screws and nuts.

⚡ Included Screw is not RoHS compliant when -SET, -SEU or -SEP are specified.

# Free Angle Brackets

For 8 Series (Slot Width 10mm) Aluminum Extrusions



■ **Features:** Extrusions can be connected at any arbitrary angles.

## ■ Free Angle Brackets



Type	Material	Surface Treatment
HBLTBA40 HBLTBBN40 HBLTBC40 HBLTBD40	EN AC-51400-T5 Equiv.	Anodize
Included Screw	EN 1.7220 Equiv.	Trivalent Chromate

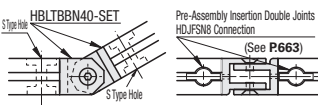
Part Number	Applicable Extrusion	Mass (g)	Accessory	Quantity	Unit Price	Volume Discount Rate
HBLTBA40 HBLTBBN40 HBLTBC40 HBLTBD40	40 Square (HFS8)	97 98 267 269	M10×16 CLDM8-40-M	1		

Ordering Example **Part Number**  
HBLTBA40

Example

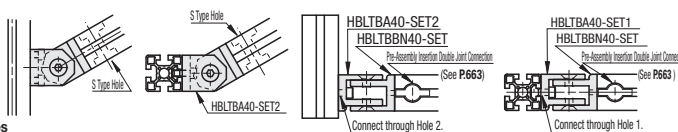
### (1) Connection of Two End Sections

Two pieces of HBLTBBN are used to connect two end sections using Pre-Assembly Insertion Double Joints (P663). (With Clamp Lever Type: HBLTBD40)



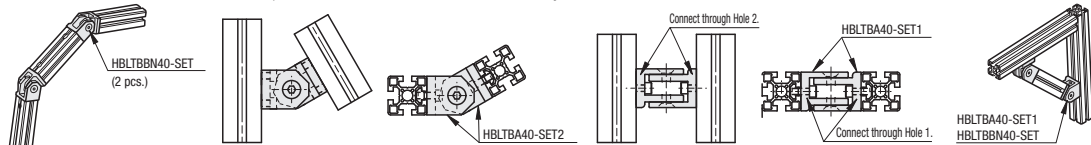
### (2) Connection of Two Side Faces

To the extrusion side face, connect with HBLTBA, a screw and a nut. To the end face, use 1 HBLTBBN for 1 HBLTBA using Pre-Assembly Insertion Double Joints. (With Clamp Lever Type: HBLTBD40)



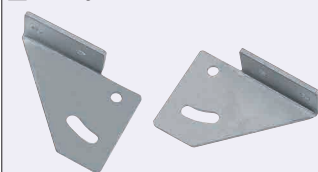
### (3) Connection of Two Side Faces

Two pieces of HBLTBA are used to connect them with extrusion side using screws and nuts.



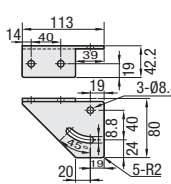
■ **Features:** Sheet Metal Brackets to fix at arbitrary positions.

## ■ Free Angle Sheet Metal Brackets

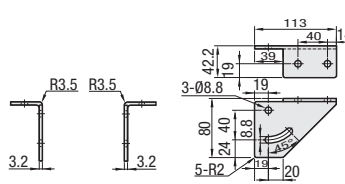


Material: EN 1.0330 Equiv.  
Surface Treatment: Trivalent Chromate

HBLPBL



HBLPBR



Part Number	Applicable Extrusion	Applicable Screw and Nut	Unit Price	Volume Discount Rate
HBLPBL HBLPBR	40 Square (HFS8)	CBST8-15 HNTT8-8	4	100-150

Example



Alterations **Part Number** - (SET, SET1)  
HBLPBL8 - SET

Alterations	Code	Spec.	Applicable Bracket
Applicable Screws and Nuts Set	SET	Supplies a set of applicable screws and nuts for fixing the bracket to an extrusion.	HBLPBL8 HBLPBR8
Set with applicable screws, nuts and clamp levers	SET1	Applicable Screw: 3 pcs. Clamp Lever (LNP): 1 pc. Flat Washer (PWF): 1 pc. Applicable Nut: 4 pcs. Set with the above items.	HBLPBL8 HBLPBR8