

Holders for Aluminum Extrusions, Clamps

Circular Posts, Square Posts, Clamps/Stands for Factory Frames

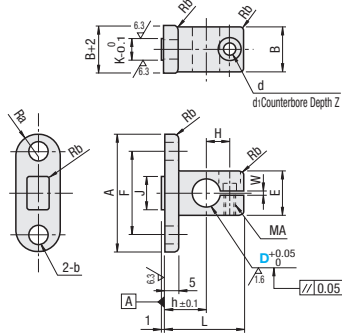
Circular Posts



RoHS10

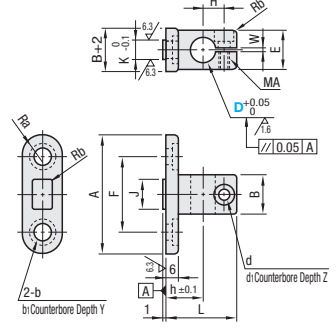
LCSA

(Post Perpendicular Holder)



LCSBN

(Post Parallel Holder)



Example

Insert the protrusion on the base into the slot of the aluminum extrusion.



Material: EN AW-2017 Equiv.
Surface Treatment: Anodize

LCSB has been changed to LCSBN. The mounting holes are now counterbored.

Part Number Type	No.	D	Extrusion Series	A	B	h	L	H	F	b	J	K	E	d	d1	Z	MA	W	Ra	Rb	Included Screw	Unit Price	Volume Discount Rate	
LCSA	5	6	HFS5	33	10	10	20.5	6.5	22	-	10	-	10	3.5	6.5	3.5	M3	1	5	1	SCB3-6	1-8 pc(s).	9-50	
		8		36	12	12	23	7	25	5.5	-	12	5.8	12	3.5	6.5	3.5	M3	1	6	1	SCB3-8		
		10		39	16	15	28.5	8.5	28	-	-	16	16	4.5	8	4.5	M4	1.5	8	1	SCB4-10			
	6	8	HFS6	38	12	12	23	7	25	-	8	-	12	3.5	6.5	3.5	M3	1	6	1	SCB3-8			
		10		42	16	15	28.5	8.5	30	6.6	-	12	7.8	16	4.5	8	4.5	M4	1.5	8	1	SCB4-10		
		12		44	18	-	29	9	32	-	-	18	18	4.5	8	4.5	M4	1.5	9	1	SCB4-12			

Part Number Type	No.	D	Extrusion Series	A	B	h	L	H	F	b	b1	Y	J	K	E	d	d1	Z	MA	W	Ra	Rb	Included Screw	Unit Price	Volume Discount Rate
LCSBN	5	6	HFS5	35	10	10	20.5	6.5	22	-	9	3.5	10	-	10	3.5	6.5	3.5	M3	1	6	1	SCB3-6	1-8 pc(s).	9-50
		8		37	12	12	23	7	24	5.5	9	12	5.8	12	3.5	6.5	3.5	M3	1	7	1	SCB3-8			
		10		41	16	15	28.5	8.5	28	-	-	16	16	4.5	8	4.5	M4	1.5	9	1	SCB4-10				
	6	8	HFS6	41	12	12	23	7	26	-	8	-	8	3.5	6.5	3.5	M3	1	7	1	SCB3-8				
		10		45	16	15	28.5	8.5	30	6.6	11	12	7.8	16	4.5	8	4.5	M4	1.5	9	1	SCB4-10			
		12		47	18	-	29	9	32	-	-	18	18	4.5	8	4.5	M4	1.5	10	1	SCB4-12				

Ordering Example: Part Number LCSA6 - D 10

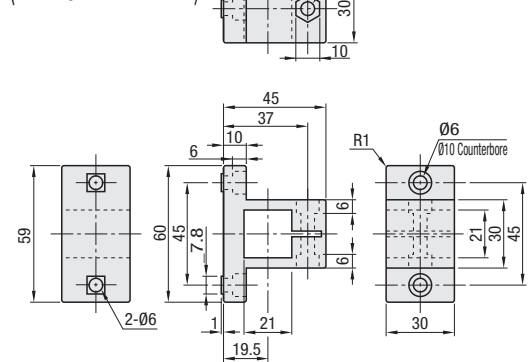
Square Posts



RoHS10

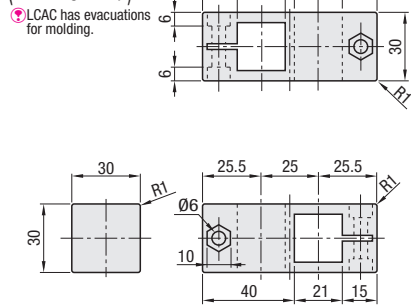
LCAH

(20mm Square Perpendicular Mounting Holder)



LCAC

(20mm Square Mounting Clamp)



Component	Material	Surface Treatment
Caster	Polyamide (Black)	-
Screw	Structural Alloy Steel	Trivalent Chromate
Nut	EN 1.0038 Equiv.	Trivalent Chromate

Part Number Type	No.	D (Nominal)	Applicable Extrusion	Applicable Screw and T Nut for the Mounting Side	Included Screw and T Nut for the Post Side	Unit Price	Volume Discount Rate					
LCAH	6	20	HFS6	CBM6-12	2	HNNT6-6	2	M6x23	1	M6 (JIS Class 1)	1	9-50
LCAC			-	HFS5-2020	-	-	-	-	M6x23	2	M6 (JIS Class 1)	2

Screws and nuts for the mounting side are not included.

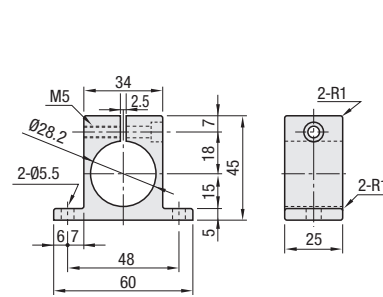
Ordering Example: Part Number LCAH6 - D 20

Clamps/Stands for Factory Frames

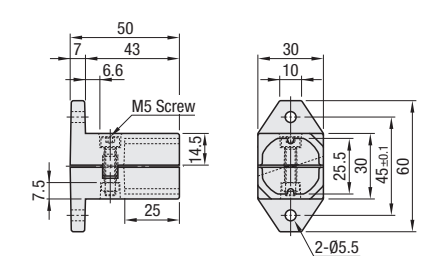


RoHS10

FFS105



FFS205



Part Number	Component	Material	Surface Treatment
FFS105	Caster	EN AW-6063 Equiv.	Clear Anodize
	Screw	EN 1.7220 Equiv.	Trivalent Chromate
FFS205	Caster	EN AC-46100 Equiv.	-
	Screw	EN 1.7220 Equiv.	Trivalent Chromate
	Nut	EN 1.0038 Equiv.	Trivalent Chromate

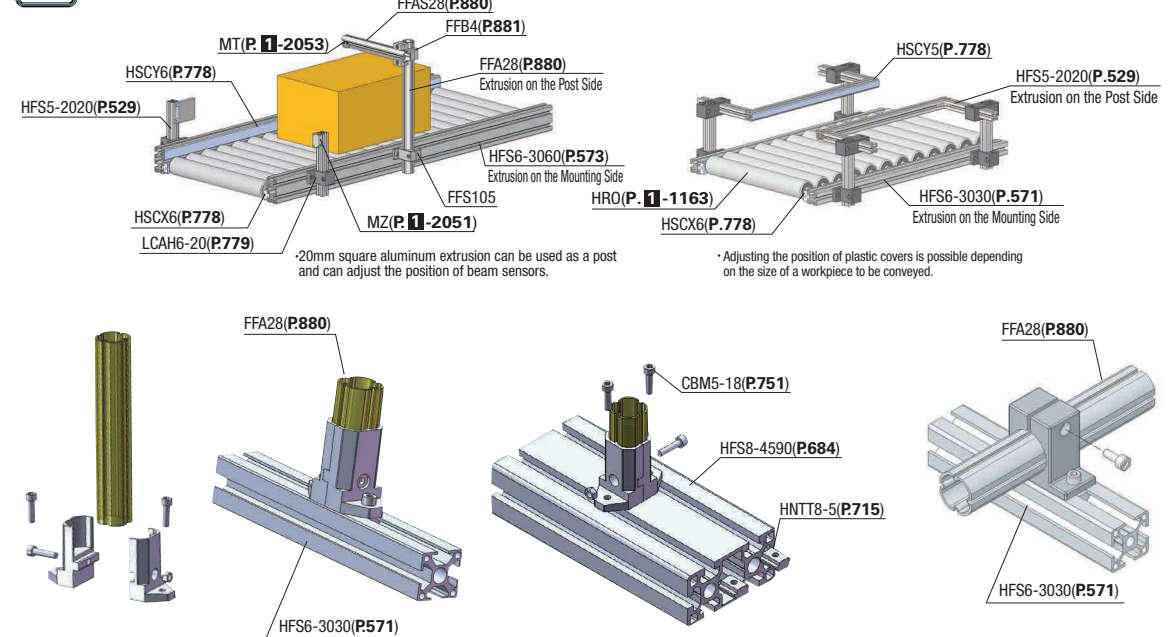
Part Number Type	Applicable Extrusion	Screw	Included Screw, Nut	Unit Price	Volume Discount Rate
FFS105	Post Side	M5-22	Quantity	Nut	Quantity
			1	-	-
FFS205	Post Side	M5-20	Quantity	Nut	Quantity
			1	M5 (JIS Class 1)	1

Ordering Example: Part Number FFS105

Applicable Screw and Nut (Mounting Side) Screws and nuts for the mounting side are not included.

No.	Extrusion on the Mounting Side	Screw	Nut	Quantity
FFS105	HFS5	CBM5-10	HNNT5-5	2
	HFS6	CBM5-12	HNNT6-5	
	HFS8	CBM5-15	HNNT8-5	
	HFS8-45	CBM5-15	HNNT8-5	
FFS205	HFS5	CBM5-12	HNNT5-5	2
	HFS6	CBM5-15	HNNT6-5	
	HFS8	CBM5-18	HNNT8-5	
	HFS8-45	CBM5-18	HNNT8-5	

EX Example



*20mm square aluminum extrusion can be used as a post and can adjust the position of beam sensors.

* Adjusting the position of plastic covers is possible depending on the size of a workpiece to be conveyed.