

Integrated Casters & Leveling Mounts

Standard, Conductive, Side Mount



Part Number	
Type	Wheel Material (Color)
HCFT, HCFTK, SHCFT	Nylon (Gray)
HCFTU	Urethane (Green)
HCFTM	MC Nylon (Blue)
HCFTD, SHCFTD	Conductive MC Nylon (Black)

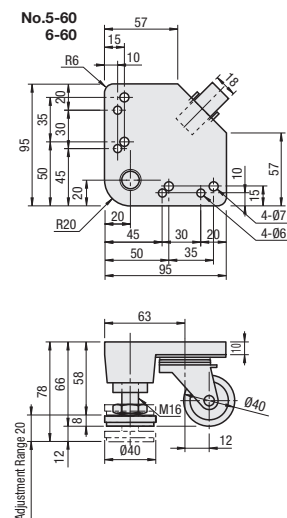
Only HCFT8-500 is phenol (black).

No.	Caster		Jack Bolt	
	Material	Surface Treatment	Material	Surface Treatment
60	EN AC-46100			
130	Equiv.	Black Paint	EN	Trivalent Chromate
250	EN 1.0320 Equiv.	Trivalent Chromate (Black)	1.0038	
350	(hot coiled)		Equiv.	
500	EN-JS 1040 Equiv.	Black Paint		

Material of jack bolt and caster is EN 1.4301 Equiv. for SHCFT or SHCFTD.

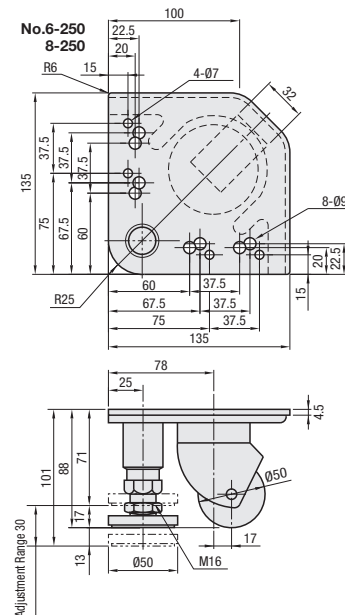
Swiveling Caster

HCFT



Applicable screws and nuts are common to M5 and M6.

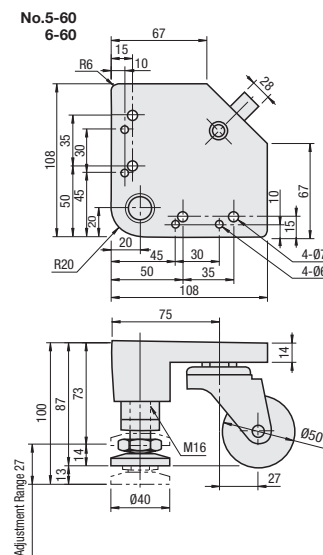
HCFT HCFTM
HCFTU HCFTD



Applicable screws and nuts are common to M6 and M8.

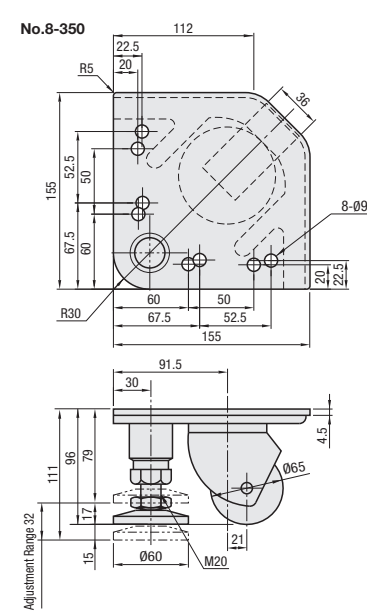
All the casters swivel 360°.

SHCFT



Applicable screws and nuts are common to M5 and M6.

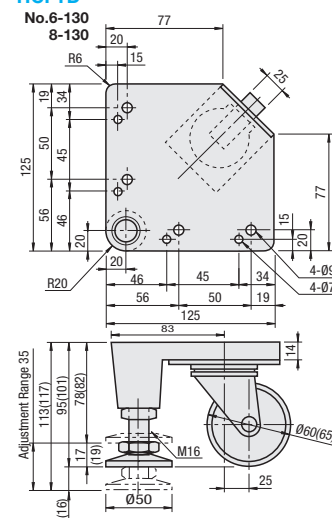
HCFT HCFTM
HCFTU HCFTD



Applicable screws and nuts are common to M6 and M8.

All the casters swivel 360°.

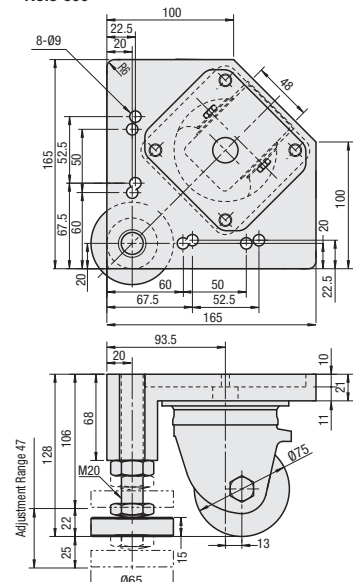
HCFT SHCFT
HCFTM SHCFTD
HCFTD



The values in () are for Stainless Steel Pad Type.

Applicable screws and nuts are common to M6 and M8.

HCFT HCFTM
HCFTU HCFTD

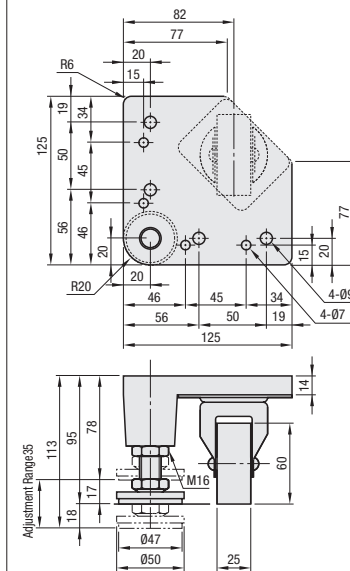


Applicable screws and nuts are common to M6 and M8.

When moving the unit using the casters, raise the leveling mounts completely.

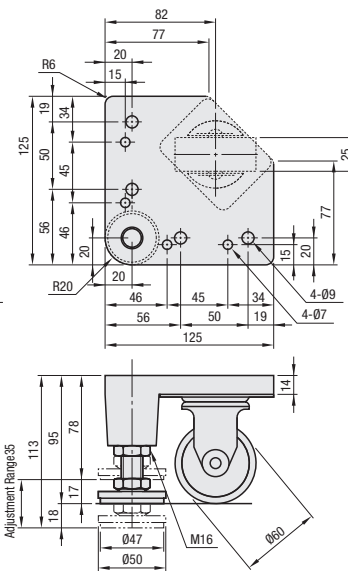
Fixed Caster

HCFTK-R
No. 6-130
8-130



Caster does not swivel.

HCFTK-L
No. 6-130
8-130



Caster Type	Part Number	Type	No.	Load	Allowable Load/Mass			Screw, Nut		Unit Price 1 ~ 50 pc(s)			
					kg	N	g	Screw	Nut	HCFT	HCFTU	HCFTM	HCFTD
Swivel	HCFT	6	60	60	588	600		CBM5-15 CBM6-15	HNTT5-5				
Swivel	HCFTM HCFTD	8	130	130	1275	1100		CBM6-20 CBM8-25	HNTT6-6				
Fixed	HCFTK-L HCFTK-R	6	130	130	1275	1100		CBM6-20 CBM8-25	HNTT6-6 HNTT8-8				
Swivel	HCFTU HCFTM HCFTD	8	250	250	2452	1445		CBM8-15	HNTT8-8				
Swivel	HCFT HCFTM HCFTD	8	500	500	4902	5600		CBM8-30					

Mounting height of HCFT6-130, HCFT8-130, HCFTK6-130 and HCFTK8-130 is the same, which enables combined use in parallel.

Caster Type	Part Number	Type	No.	Load	Allowable Load/Mass			Screw, Nut		Unit Price 1 ~ 50 pc(s)	
					kg	N	g	Screw	Nut	SHCFT	SHCFTD
Swivel	SHCFT	6	60	60	588	600		SCB5-20 SCB6-20	HNTTSN5-5 HNTTSN6-6		
Swivel	SHCFT SHCFTD	8	130	130	1275	1100		SCB8-25	HNTTSN8-8		

Pad and caster are made of stainless steel (EN 1.4301 Equiv.).



Alterations



Part Number - (SET, BL)

HCFT6-130 - SET

Alteration	Code	Spec.	Integrated Caster Unit			Component		
			Type	No.	Load	Screw	Nut	Quantity
Applicable Screw and Nut Set	SET	Applicable screws and nuts come in a set.	HCFT	5	60	CBM5-15	HNTT5-5	
			HCFT	6	60	CBM6-15		
			HCFT, HCFTK, HCFTM, HCFTD	6	130	CBM6-20	HNTT6-6	
			HCFT, HCFTU, HCFTM, HCFTD	250	250	CBM6-12		
			HCFT, HCFTK, HCFTM, HCFTD	130	130	CBM8-25		
			HCFT, HCFTU, HCFTM, HCFTD	8	250	CBM8-15	HNTT8-8	
			HCFT, HCFTM, HCFTD	350	350	CBM8-30		

Alteration		Leveling Mount Length						*The height from the floor can be increased by using a longer leveling mount. However, the leveling mount sticks out from the plate surface.
Code		BL100			BL150			
Spec. Changes the length of standard leveling mounts.	Load	Height from Floor		Load	Height from Floor			
		Standard	After Change		Standard	After Change		
	60	78	132	60	78	178		
	130	113	152	130	113	200		
	250	101	145	250	101	191		
350	111	150	350	111	200			
		-		500	150	210		

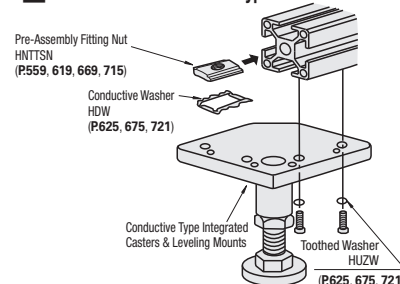
The height from the floor can be increased by using a longer leveling mount. However, the leveling mount sticks out from the plate surface.



Ordering Example

Part Number
HCFT6-130
HCFTK-L6-130

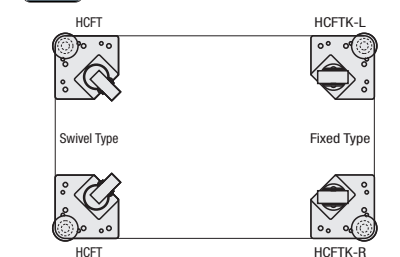
How to Install Conductive Type



Conductive washers and toothed washers are not included with Conductive Type.



Example



Example

