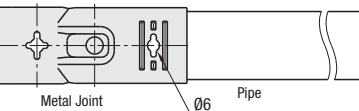


Metal Joint Selection

Metal Joint

■ Metal Joint

(1) A screw hole has been provided to allow the metal joint to be firmly connected to a pipe frame.

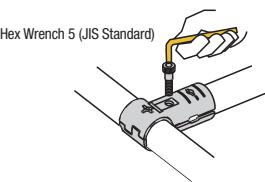


(2) Material and coating are selectable according to the purpose of use.

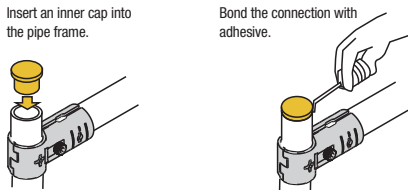
Part Number	Material	Plating
PBLSN, PBLNS	EN 1.0330 Equiv.	Cathodic Electrodeposition Coating
PBLSNC		Nickel Plating
PBLSNS	EN 1.4301 Equiv.	-

■ How to Use Metal Joints

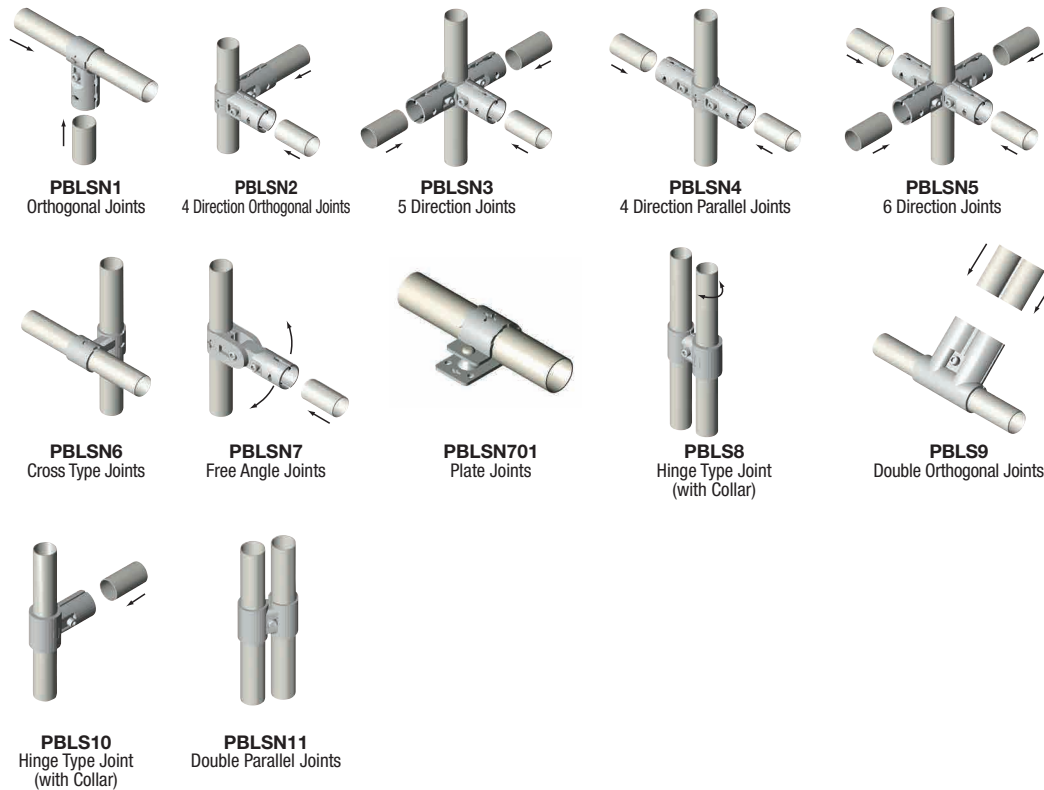
(1) Use a hex wrench 5 (JIS standard) for tightening.



(2) When using metal joints, install an inner cap (PJ503) on the end of the pipe frame with adhesive.
(No inner cap is required for aluminum pipe frames.)



■ Metal Joint Connecting Configurations



RoHS10

Type	Material	Plate Thickness	Surface Treatment
PBLSN	EN 1.0330 Equiv.	2.6mm	Cathodic Electrodeposition Coating
PBLSNC			Nickel Plating
PBLSNS	EN 1.4301 Equiv.	-	-

PBLSN1
PBLSNC1
PBLSNS1

PBLSN2
PBLSNC2
PBLSNS2

PBLSN3
PBLSNC3
PBLSNS3

PBLSN4
PBLSNC4
PBLSNS4

PBLSN5
PBLSNC5
PBLSNS5

PBLSN6

Part Number	Type	No.	Mass (g)	Components (except Bracket)				Unit Price	
				Screw	Nut	Quantity	Quantity	PBLSN, PBLSNC	PBLSNS
PBLSN	(Cathodic Electrodeposition Coating)	1	160	M6-25	M6	1	1		
PBLSN		2	250			2	2		
PBLSNC		3	325			3	3		
PBLSNS		4	250			2	2		
PBLSNS		5	400			4	4		
PBLSN	(Cathodic Electrodeposition Coating)	6	150			1	1		

RoHS10

Type	Material	Plate Thickness	Surface Treatment
PBLS	EN 1.0330 Equiv.	2.6mm	Cathodic Electrodeposition Coating
PBLSN			Electrodeposition Coating

PBLSN7

PBLS8

PBLS9

PBLS10

PBLSN11

PBLSN701

⚡ No nut. The main body is tapped.

⚡ A nut is welded to the main body.

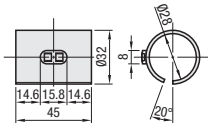
Part Number	Type	No.	Mass (g)	Components (except Bracket)				Unit Price	
				Screw	Nut	Quantity	Others	PBLSN, PBLNS	
PBLSN	(Cathodic Electrodeposition Coating)	7	260	M6-25	M6	2	2		
PBLSN		701	80	M6-10		1	0		
PBLSN		8	200				0	Included Collar	
PBLS	(Cathodic Electrodeposition Coating)	9	289	M6-25	M6	1	0		
PBLS		10	186				0	Included Collar	
PBLSN		11	165				1		

* No nuts included for PBLS8 and PBLS9 since there is a tap on the metal bracket.



⚡ Use of PBLS8 and PBLS10: insert the frame through the included collar, slide the frame and the metal joint, then rotate it.

Fig. 1 Included Collar Size



Ⓜ Material: Polyethylene (White)