

Stainless Steel Pipe Frames / Joints / Accessory Parts

Stainless Steel Pipe Frames

PFSUS (L Configurable)

Seam (Butt Weld*)

RoHS10

*The height of welding bead is shorter than 0.1mm.

Material EN 1.4016 Equiv.

L Configurable

| Part Number | L 1mm Increment | Mass kg/m | Unit Price Less Than 300mm 1 ~ 50 pc(s). | Unit Price/m 300mm or More 1 ~ 50 pc(s). |
|-------------|-----------------|-----------|--|--|
| PFSUS | 28 | 60~2400 | 0.62 | |

For orders larger than indicated quantity, please check with WOS.

Ordering Example: Part Number - L
PFSUS28 - 1250

When L is less than 300, the unit price is as indicated in the table, regardless of its length.

When L is 300 or more, total prices are calculated as follows:
Unit Price/m x Specified Full Length = Sales Price

Accessory Parts for Stainless Steel Pipe Frame

Due to the different sizes of Stainless Steel Pipe Frames from the Resin Coated and Extruded Aluminum Pipe Frames, the pipe insertion type accessories cannot be used. For Metal Joints, Casters, Adjusting Bolt Set, Insert Nuts and Inner Caps, use the following parts.

Caster

FFS301 **FFS301S** (with Stopper)

*Tighten with a wrench for pipe inserts (PFSP21). (P903)

When mounting on Stainless Steel Pipe Frames, use in combination with Insert Nuts (SPFINS 12).

| Type | Main Body Material | Main Body Surface Treatment | Wheel Material | Body Bearing |
|---------|-------------------------------|-----------------------------|------------------|--------------|
| FFS301 | EN 1.0320 Equiv. (hot rolled) | Trivalent Chromate | Synthetic Rubber | Provided |
| FFS301S | EN 1.0320 Equiv. (hot rolled) | Trivalent Chromate | Synthetic Rubber | Provided |

| Part Number Type | Wheel Material Component | | M | B | F | H | J | E | Wrench Flat Width mm | Mass kg | Allowable Load N | Unit Price |
|------------------------|--------------------------|-------|----|----|------|----|----|----|----------------------|---------|------------------|------------|
| | D | Color | | | | | | | | | | |
| FFS301 | 50 | Black | 12 | 20 | 17.5 | 68 | 35 | 22 | 19 | 165 | 300 | |
| | 75 | Gray | | | | | | | | | | |
| FFS301S (with Stopper) | 50 | Black | 12 | 20 | 30.9 | 68 | 35 | 22 | 19 | 190 | 300 | |
| | 75 | Gray | | | | | | | | | | |

Adjusting Bolt Set

JBS410S

Insert Nut SPFINS12 and a Leveling Mount NFJN12-100 are included as a set.

| Part Number | Adjusting Bolts Material | Adjusting Bolts Surface Treatment | Insert Nut Material |
|-------------|--------------------------|-----------------------------------|---------------------|
| JBS410S | EN 1.0038 Equiv. | Trivalent Chromate | Stainless Steel |

| Part Number | Mass (g) | Unit Price |
|-------------|----------|------------|
| JBS410S | 269 | |

Insert Nut

SPFINS12

Tapered part from tip to head (1.2°) allows insertion into the I.D. of pipe frames.

Material Stainless Steel

| Part Number Type | M | Mass (g) | Unit Price |
|------------------|----|----------|------------|
| SPFINS | 12 | 85 | |

Ordering Example: Part Number - Wheel Material
FFS301-75 - R
FFS301S-50 - R
JBS410S
SPFINS12

RoHS10

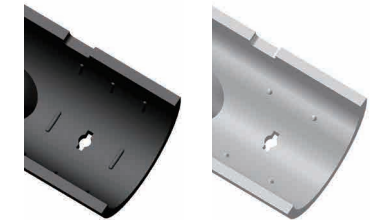
| Part Number | Material | Plate Thickness | Surface Treatment |
|-------------|------------------|-----------------|--------------------|
| PBLSS | EN 1.0330 Equiv. | 2.6mm | Trivalent Chromate |

PBLSS1 **PBLSS2** **PBLSS3** **PBLSS4** **PBLSS5** **PBLSS6** **PBLSS7**

| Part Number Type | No. | Mass (g) | Included Screw | | Unit Price |
|------------------|-----|----------|----------------|----------|------------|
| | | | Size | Quantity | |
| PBLSS | 1 | 160 | M6-25 | 1 | |
| | 2 | 250 | | 2 | |
| | 3 | 325 | | 3 | |
| | 4 | 250 | | 2 | |
| | 5 | 400 | | 4 | |
| | 6 | 150 | | 1 | |
| | 7 | 260 | | 2 | |

Ordering Example: Part Number PBLSS1

Features of Joints for Stainless Steel Pipe Frame
The spurs that contact the pipe frames have been revised with improved geometry, and the retention force has been improved for use with stainless steel pipe frames. (For details: see P.889)



PBLSS1 (Conventional Type) PBLSS1
Please note that the spurs may be crushed by repeated assembly/disassembly and may reduce the gripping force.

Inner Cap

JBS402S

Material Polyethylene

| Part Number | Mass (g) | Unit Price (4 pcs./pkg.) |
|-------------|----------|--------------------------|
| JBS402S | 3 | |

Contains 4 pcs./pkg. Check the order quantity before ordering.

Ordering Example: Part Number JBS402S