

Round Bar Pull Handles / Round Bar Pull Handles with Mounting Tabs / Oval Pull Handles

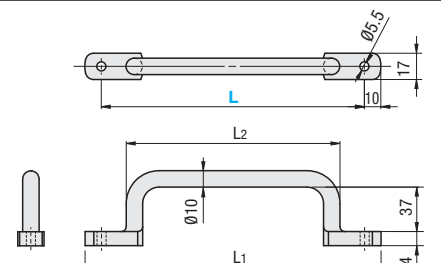
Outside Mount



Round Bar Pull Handles



Type	Material	Surface Treatment
UWASN	EN 1.0038 Equiv.	Chrome Plating
UWASNB	EN 1.0038 Equiv.	Black Oxide
UWANSS	EN 1.4301 Equiv.	Buffing



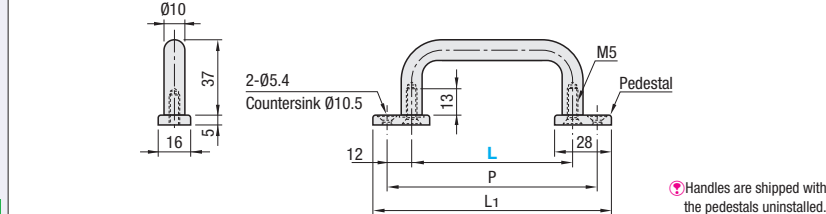
RoHS 10

Part Number	Type	L	L1	L2	Unit Price		
					UWASN	UWASNB	UWANSS
		110	130	80			
		120	140	90			
		125	145	95			
		160	180	130			
		200	220	170			
		250	270	220			

Round Bar Pull Handles with Mounting Tabs



Type	Material	Surface Treatment	Washer UWANG		Washer UWANSNG		Thread
			Material	Surface Treatment	Material	Surface Treatment	
UWANG	EN 1.0715 Equiv.	Chrome Plating	Zinc Die Cast	Electrostatic Paint (Silver)	-	-	SHFBSS-12
UWANSNG	EN 1.4301 Equiv.	Buffing	-	-	EN 1.4301 Equiv.	-	EN 1.4301 Equiv. 2 pcs.



The pedestals are rotatable in any desired position.

RoHS 10

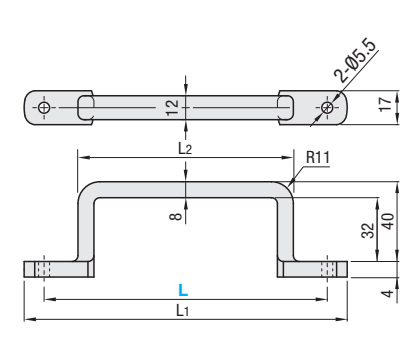
Handles are shipped with the pedestals uninstalled.

Part Number	Type	L	P	L1	Allowable Load (N)	Unit Price	
						UWANG	UWANSNG
		80	104	118	2000		
		100	124	138			
		110	134	148			
		120	144	158			
		125	149	163			
		160	184	198			
		200	224	238			
		250	274	288			

Oval Pull Handles



Type	Material	Surface Treatment
USAST	EN 1.0038 Equiv.	Chrome Plating
USASTS	EN 1.4301 Equiv.	Buffing



RoHS 10

Part Number	Type	L	L1	L2	Mass (g)	Unit Price	
						USAST	USASTS
		110	130	78	126		
		120	140	88	133		
		125	145	93	137		
		160	180	128	160		
		200	220	168	188		
		250	270	218	224		

Ordering Example: Part Number UWASN110, UWANSNG200, USAST125

Aluminum Pull Handles / Sheet Metal Pull Handles

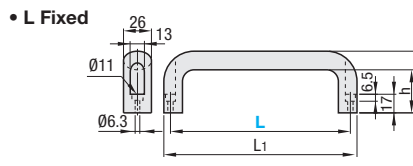
Outside Mount



Aluminum Pull Handles



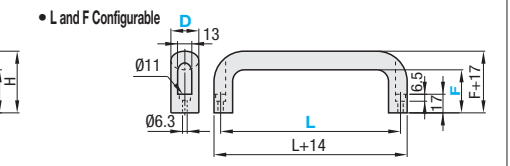
Type	Material	Surface Treatment
① UADL	Aluminum Alloy	Tumble Polish
② UADR		Electrostatic Paint (Mat Black)
③ UADLA		Buffing
④ UADEL		Clear Anodize
⑤ UADS		Sandblasting



RoHS 10

Part Number	Type	L	L1	H	h	Allowable Load (N)	Unit Price			
							UADL	UADR	UADLA	UADEL
(L Fixed)		100	114	47	30	1200				
		116	130	53	36	1200				
		132	146	55	38	800				
		150	164	67	50	600				
		164	178	67	40	600				
		196	210	57	40	390				

Ordering Example: Part Number UADR 116, UADLF26 100 - F



Part Number	Type	D	1mm Increment	Allowable Load for Reference (N)	Unit Price		
					UADLF	UADRF	UADSF
(L and F Configurable)		26	100-200	30-50	390-1200		

Aluminum Pull Handles



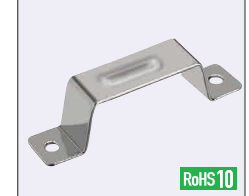
Type	Material	Surface Treatment
① HHDF	Aluminum Alloy	Electrostatic Paint (Mat Black)
② HHDFL	Aluminum Alloy	Tumble Polish
③ HHDFLA	Aluminum Alloy	Buffing



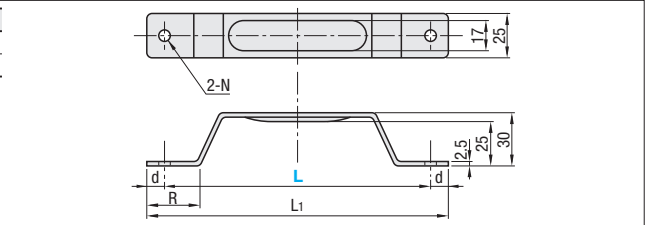
RoHS 10

Part Number	Type	A	Mass (g)	L	L1	H	h	R	C	Unit Price		
										HHDF	HHDFL	HHDFLA
		19	64	90	107	41	29	5.3	9			
		20	110	93.5	112	44	31	6.5	10.5			
		26	250	130	149	57	40	8.5	13.3			

Sheet Metal Pull Handles



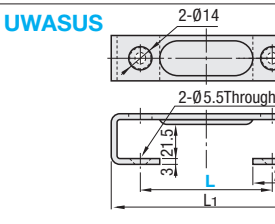
Type	Material	Surface Treatment
UWDSU	EN 1.0038 Equiv.	Chrome Plating
UWDSUS	EN 1.4301 Equiv.	Buffing



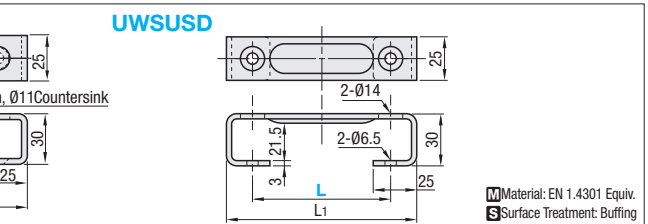
RoHS 10

Part Number	Type	L	L1	R	d	N	Allowable Load (N)	Mass (g)	Unit Price	
									UWDSU	UWDSUS
	(Steel)	80	96	20	8	5.5	400	61		
	(Stainless Steel)	100	116	23	8	5.5	380	70		
		150	170	30	10	6.5	160	93		

Sheet Metal U-Shaped Pull Handles



RoHS 10



Part Number	Type	L	L1	Mass (g)	Unit Price	
					UWASUS	UWSUSD
		68	98	105		
		100	130	120		
		110	140	130		
		120	150	135		
		150	180	155		
		188	218	185		
		238	268	215		
		288	318	235		

Ordering Example: Part Number UWASUS100

Material: EN 1.4301 Equiv. Surface Treatment: Buffing