

Air Nozzles - Economy Type / Air Nozzles - De Laval Type

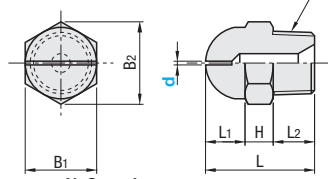
Spray Nozzles - Circular Spray Pattern Standard / Air-Amplify Type

Air Nozzles - Economy Type

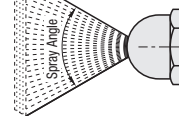


RoHS 10

NZAK (Narrow Blow Port Type)

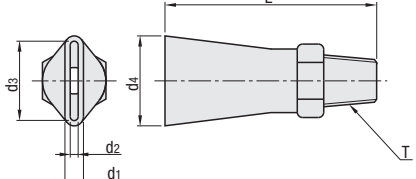


• Air Spray Image

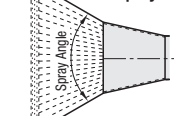


■ Features: Gas spreads fan-like in line to the slit.
■ Applications: Steam Humidification, Drying, Air Blow, etc.

NZAL (Wide Blow Port Type)



• Air Spray Image



■ Features: Air sprayed at wide angle.
■ Applications: Dust Proof, Air Blow, etc.

Material: EN 1.4301 Equiv.

Part Number Type	No.	d Slot Width	T	L	L1	L2	H	B1	B2	Mass (g)	Unit Price 1 ~ 4 pc(s).	Volume Discount Rate 5~20
NZAK	1	0.6	R1/8	22	8	8	6	12	13.8	12		
	2	0.8	R1/4	25	8.5	10	6.5	14	16	20		

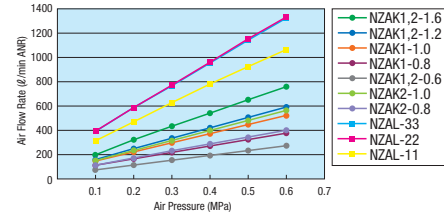
Part Number Type	No.	L	d1	d2	d3	d4	T	Mass (g)	Unit Price 1 ~ 4 pc(s).	Volume Discount Rate 5~20
NZAL	11	40	3.1	1.5	10	11.6		15		
	22	40	3.5	1.5	15	17	R1/8	20		
	33	45	3.5	1.5	18.5	20.5		30		

Projection Angle

Pressure [MPa]	Projection Angle NZAK										NZAL		
	1-0.6	1-0.8	1-1.0	1-1.2	1-1.6	2-0.6	2-0.8	2-1.0	2-1.2	2-1.6	11	22	33
0.1	55°	60°	65°	70°	70°	60°	60°	65°	70°	70°			
0.2	60°	65°	70°	75°	75°	65°	65°	70°	75°	75°			
0.3	65°	70°	75°	80°	80°	70°	70°	75°	80°	80°			
0.4	70°	75°	80°	85°	85°	75°	75°	80°	85°	85°	25°	50°	55°
0.5	75°	80°	85°	85°	85°	80°	80°	85°	90°	90°			
0.6	80°	80°	85°	85°	85°	85°	85°	85°	85°	85°			

☺ Listed values are for reference, not guaranteed.

Air Flow Rate Property Table



☺ Values on the graph are theoretical values, not guaranteed.

Air Nozzles - De Laval Type

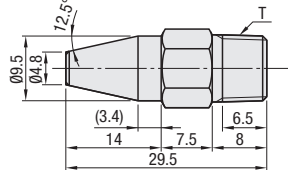


RoHS 10

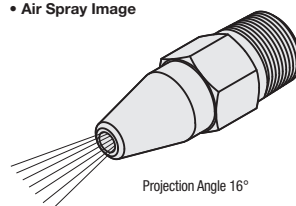
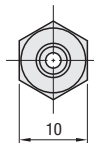
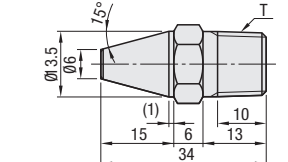
Type	Material	Max. Operating Pressure	Heat Resistance Temp.
ALVA	EN AW-5052 Equiv.	0.7MPa	200°C
ALVS	EN 1.4305 Equiv.		

■ Features: Special internal structure enables the air blow at sonic speed, which has powerful colliding force.

ALVA No.=1



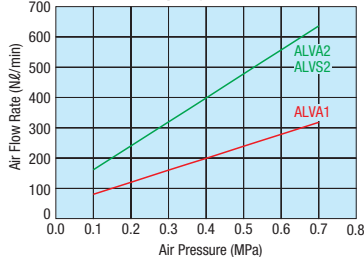
ALVA, ALVS No.=2



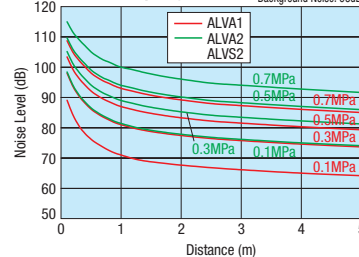
Part Number Type	No.	T	Orifice	Weight (g)	ALVA		ALVS	
					Unit Price 1 ~ 4 pc(s).	Volume Discount Rate 5~20	Unit Price 1 ~ 4 pc(s).	Volume Discount Rate 5~20
ALVA ALVS	1	R1/8	02.7	8				
	2	R1/4	03.8	11				

Part Number - d
NZAK2 - 1.0
NZAL11
ALVA1

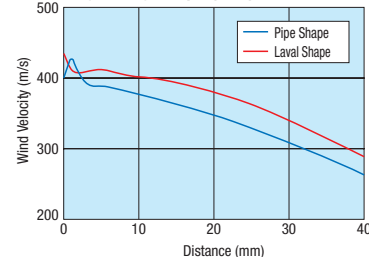
Air Flow Rate Property Table



Quietness Property Table



Velocity Decay Graph (Ref.)



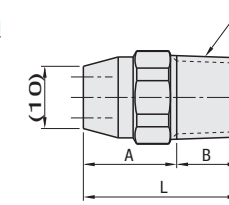
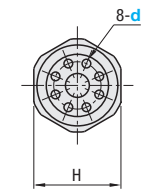
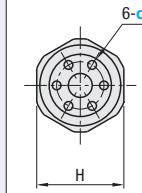
Standard



RoHS 10

Type	Material	Max. Operating Pressure	Breakdown Torque	Heat Resistance Temp.
ARDP	Polypropylene (PP)	0.7MPa	15N·m	70°C
ARDA	EN AW-5052 Equiv.			
ARDS	EN 1.4305 Equiv.	1.0MPa	-	200°C

N (Number of Holes) = 6 N (Number of Holes) = 8



■ Features: Strong straight air is sprayed through holes on the end.
■ Applications: For removal of oil, water drops and chips, cooling / drying and air blow to narrow spaces, etc.



Part Number Type	d	N (Number of Holes)	Air Flow Rate L/min (for 0.3MPa)	T	L	A	B	H	Mass (g)		
									ARDP	ARDA	ARDS
ARDP ARDA ARDS	1.0	6	190	R1/4	25	15	10	14	2	6	15
		8	250								
	1.4	6	350								
		8	480								

d	N (Number of Holes)	ARDP		ARDA		ARDS	
		Unit Price 1 ~ 4 pc(s).	Volume Discount Rate 5~20	Unit Price 1 ~ 4 pc(s).	Volume Discount Rate 5~20	Unit Price 1 ~ 4 pc(s).	Volume Discount Rate 5~20
1.0	6						
	8						
1.4	6						
	8						

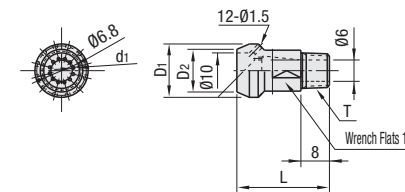
☺ For orders larger than indicated quantity, please check with WOS.

Air-Amplified Type

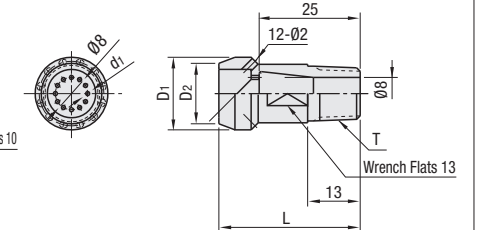
Type	Material	Max. Operating Pressure	Heat Resistance Temp.
ARDADA	EN AW-5052 Equiv.	0.7MPa	200°C

■ Features: Air volume and speed out of the orifices are increased by taking surrounding air. High colliding force with less air enables energy saving and air consumption reduction.

No.1



No.2



RoHS 10

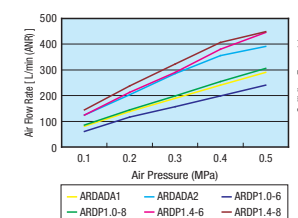
Part Number Type	No.	T	Orifice d1	L	D1	D2	Weight (g)	Unit Price	Volume Discount Rate
								1 ~ 4 pc(s).	5~20
ARDADA	1	R1/8	0.8	26	15	12	5		
	2	R1/4	1	35	18	15	9		

☺ For orders larger than indicated quantity, please check with WOS.

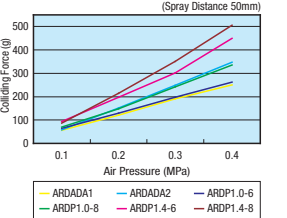


Ordering Example
Part Number - N (Number of Holes)
ARDADA1.0 - 6

Air Flow Rate Property Table



Air Colliding Force Property Table



☺ Values on the graph are for reference, not guaranteed.