

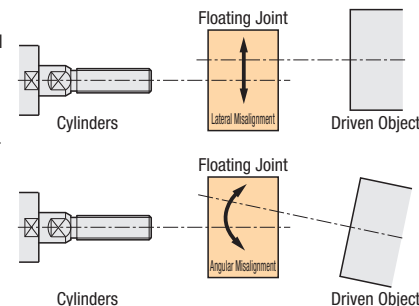
Floating Joints - Overview

Features of Floating Joints

This Product connects cylinder and operated object and absorbs misalignment (= Lateral Misalignment) or Angular Misalignment (= Out of Parallelism Tolerance).

Advantages of Floating Joints

- It is not necessary for the cylinder shaft to match the connecting body with high precision.
- Thrust does not lower even if the precision of the shaft fit is rough.
- Prevents breakage of cylinder gaskets and prolong the life of operated objects.



Types of Floating Joints

Quick Connection Type: The connector latches in the groove of the holder and the connecting unit, enabling simple connection simply by passing through the hole of the connecting unit.

Cylinder Rod Tip Shape	Connector	Connector and Holder Set	Holder
Threaded	<p>[Tapped Type]</p> <p>Fixed P.1527</p> <p>Separate P.1529</p> <p>Configurable P.1528</p>	<p>Connector and Holder Set P.1526</p>	<p>Mounting Image</p> <p>Flange Type P.1533</p> <p>Compact Type P.1536</p>
Tapped	<p>[Threaded Type]</p> <p>Fixed P.1530</p> <p>Separate Type P.1532</p> <p>Configurable P.1531</p> <p>Bolt Mount Type P.1532</p>	<p>Connector and Holder Set P.1530</p>	<p>Mounting Image</p> <p>Bar Type P.1535</p> <p>Top Mount Type P.1534</p>

Flange Type: Connect can be retained by a flange. Use Backing Plates (Cover plates) to avoid breakage of operated objects by impact caused by connectors.

Cylinder Rod Tip Shape	Connector, Mount Flange Sets	Backing Plates	Connected images of the cylinder and driven part
Threaded	<p>[Tapped Type]</p> <p>Standard P.1539</p> <p>Separate P.1539</p> <p>Wrench Flats P.1539</p>	<p>Round, Wrench Flats P.1544</p>	<p>Cylinders</p> <p>Connector, Mount Flange Sets</p> <p>Backing Plate</p> <p>Driven Part</p>
Tapped	<p>[Threaded Type]</p> <p>Standard P.1541</p> <p>Separate P.1541</p> <p>Wrench Flats P.1541</p>		

One-Piece Type: This product absorbs lateral, angular misalignment. Extra Short Type is compact in size and space-saving.

Joining Method	Floating Joints Integrated Type	Connected images of the cylinder and driven part
	<p>Threaded for Cylinder</p> <p>Tapped for Cylinder</p>	
Side Mounting	<p>Extra Short Threaded Stud Mount (for Threaded Cylinder) P.1549</p> <p>Miniature P.1547</p> <p>Screw-In P.1547</p> <p>Extra Short Threaded Stud Mount (for Tapped Cylinder) P.1549</p>	<p>Cylinders</p> <p>Connector</p> <p>Driven Part</p>
Foot Mount	<p>Extra Short Foot Mount (for Threaded Cylinder) P.1550</p> <p>Bracket Mounting P.1548</p> <p>Extra Short Foot Mount (for Tapped Cylinder) P.1550</p>	<p>Cylinders</p> <p>Connector</p> <p>Driven Part</p>
Flange Mounting	<p>Extra Short Tapped Round P.1551</p> <p>Extra Short Tapped Compact P.1551</p> <p>Flange Mounting P.1547</p> <p>Extra Short Threaded Round P.1551</p> <p>Extra Short Threaded Compact P.1551</p>	<p>Cylinders</p> <p>Connector</p> <p>Driven Part</p>

Floating Joints - Quick Connection Type

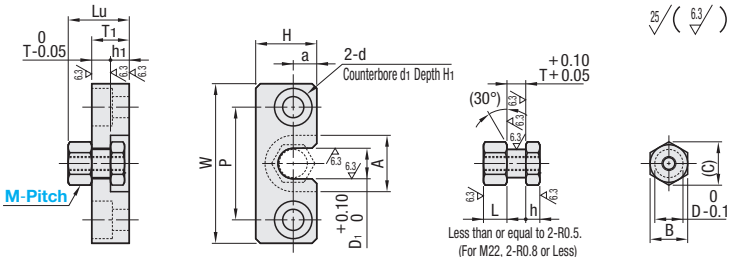
[Tapped] Cylinder Connector and Holder SetSheet Metal Holder Set

Features: Purchasing a set of Connector (FJR) and Holder (HLRA) for Floating Joints Quick Connection Type is better value than purchasing stand-alone products.

Cylinder Connector and Holder Set

Type	Holder Type	Material	Surface Treatment	Hardness
FJRHA	HLRA	EN 1.1191 Equiv.	Salt-bath Nitriding	500HV~

- Salt-bath Nitriding may cause uneven color, which doesn't affect mechanical function.
- For details of Salt-bath Nitriding, see P.1907.



Part Number	Type	M-Pitch	T	D	L	h	B	C	D1	A	T1	h1	W	H	a	P	d	d1	H1	Lu	Unit Price
FJRHA		3-0.5	4	6	5	3	8	9.2	6.5	12	8	4	34	13	5	24	4.5	8	4.4	13	
		4-0.7	4	7	6	3	10	11.5	8	14	8	4	36	15	6	26	4.5	8	4.4	14	
		5-0.8	6	8	7	3	12	13.9	9	17	10	4	42	18	7	30	5.5	9.5	5.4	17	
		6-1.0	6	10	8	4	14	16.2	11	19	11	5	44	20	8	32	5.5	9.5	5.4	19	
		8-1.25	8	13	9	4	17	19.6	14	23	13	5	52	24	10	38	6.6	11	6.5	22	
		10-1.25	8	16	11	4	21	24.2	18	28	13	5	56	30	12	42	6.6	11	6.5	24	
		14-1.5	12	21	13	4	26	30	23	34	17	5	70	36	15	52	9	14	8.6	30	
		18-1.5	15	25	15	5	30	34.6	27	38	21	6	84	43	19	62	11	17	10.5	36	



Ordering Example

Part Number

FJRHA5-0.8

Sheet Metal Holder Set

Type	Material	Surface Treatment	Hardness
FJSC	EN 1.1191 Equiv.	Salt-bath Nitriding	500HV~

Joint

Included Holder

Technical drawings showing dimensions and tolerances for the Sheet Metal Holder Set. The drawings include the joint, the included holder, and the cylinder rod. The dimensions include T, D, L, h, B, C, D1, A, T1, h1, W, H, a, P, d, d1, H1, and Lu. The drawings also show the surface treatment and hardness requirements.

Part Number		T	h	D	B	(C)	Included Holder											Unit Price		
Type	M-Pitch						Tolerance	T	Tolerance	B	D1	W	H	a	h	ℓ	P		d	Maximum Applied Tensile / Compression Force (N)
FJSC	3-0.5	2.3	+0.3	2	6	8	9.2	2.3	±0.19	8	6.5	16	25	5	14	6	8	4.5	19	
	+0.25		7		10	11.5	10			8	19	26	6	10			54			
	4-0.7	3.2	+0.35 +0.3	3	8	12	13.9	3.2	±0.23	12	9	22	33	7	18	8	12	123		
	5-0.8				10	14	16.2			14	11	25	34	8			14	123		
	6-1.0																			



Ordering Example

Part Number

FJSC4-0.7

