

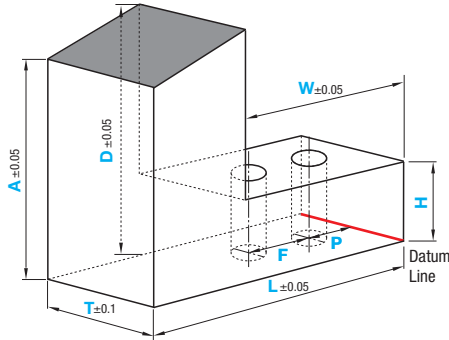
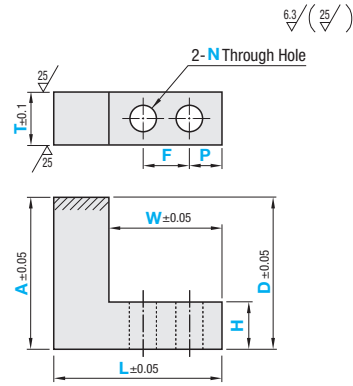
Locators (Vertically Inclined)

Two-Hole Type

Vertically Inclined



Type	Material	Hardness
UKSVT	EN 1.0038 Equiv.	-
UKCVT	EN 1.1206 Equiv.	Only End Face Hardened 55HRC -
UKUVT	EN 1.4301 Equiv.	-



Shaded area is hardened.
Chamfering of the workpiece's receiving surface section is C0.5.
For other chamfering, fine chamfering of about C0.3 is used.

Part Number		L	H	W	A	D	N	F	P
Type	T	1 mm Increments	*1	1 mm Increments	0.01 mm Increments	0.01 mm Increments	(Through Hole)	*4	*4
UKSVT	9	29~70	10	17~58	10~100		7	0.1 mm Increment	
UKCVT	12		12						
UKUVT	16		15						
	19		20						
	20								

*1 $H + 1 \leq$ (Min. Value of A, D) *2 $10 \leq L - W$ when (Max. Value of A, D) ≤ 60 ; $12 \leq L - W$ when (Max. Value of A, D) > 60 . *3 (Max. Value of A, D) - (Min. Value of A, D) ≤ 21
*4 The thickness around the hole machining requires 1 mm or more.

Ordering Example: UKSVT16 - L46 - H15 - W30 - A35 - D30 - N9 - F13 - P7

T	A	Unit Price							
		UKSVT				UKCVT			
		L29~L40	L41~L50	L51~L60	L61~L70	L29~L40	L41~L50	L51~L60	L61~L70
9, 12	10 ~ 50								
	50.01~100								
16, 19, 20	10 ~ 50								
	50.01~100								

T	A	Unit Price			
		UKUVT			
		L29~L40	L41~L50	L51~L60	L61~L70
9, 12	10 ~ 50				
	50.01~100				
16, 19, 20	10 ~ 50				
	50.01~100				

Alterations: UKSVT16 - L46 - H15 - W30 - A35.01 - D30.01 - M8 - F13 - P7 - ZKC

Alterations	Hole Type Change			Additional Hole																	
	Tapped Hole	Counterbored Hole	Counterbored Hole (for Spring Washer)	Additional Tapped Hole	Additional Dowel Hole																
Code	M	Z	ZG	MB	K																
Spec.	<p>Changes both through holes (N) into tapped holes. - M6/M8</p>	<p>Changes both through holes (N) into counterbored holes. - Z6/Z8 Applicable to T = 16, 19, or 20 only</p> <table border="1"> <tr><th>Dim.</th><th>Screw Nominal Dia.</th></tr> <tr><td>d, h</td><td>6 8</td></tr> <tr><td>d, h</td><td>7 9</td></tr> <tr><td>d1</td><td>11 14</td></tr> </table>	Dim.	Screw Nominal Dia.	d, h	6 8	d, h	7 9	d1	11 14	<p>Changes both through holes (N) into counterbored holes (for spring washers). - ZG6/ZG8 Applicable to T = 16, 19, or 20 only</p> <table border="1"> <tr><th>Dim.</th><th>Screw Nominal Dia.</th></tr> <tr><td>d</td><td>7 9</td></tr> <tr><td>d1</td><td>11 14</td></tr> <tr><td>h</td><td>8 11</td></tr> </table>	Dim.	Screw Nominal Dia.	d	7 9	d1	11 14	h	8 11	<p>Adds a tapped hole on the bottom of the receiving surface. - MB6/MB8 - J = 0.1 mm increments A tapped hole cannot be added within the W dim. range. Combination with LPH or K is not available.</p>	<p>Adds a dowel hole on the bottom of the receiving surface. - K6/K8 - E = 0.1 mm increments A dowel hole cannot be added within the W dim. range. Combination with LPH or MB is not available.</p>
Dim.	Screw Nominal Dia.																				
d, h	6 8																				
d, h	7 9																				
d1	11 14																				
Dim.	Screw Nominal Dia.																				
d	7 9																				
d1	11 14																				
h	8 11																				
Ordering Code	N7 → M6	N9 → Z8	N9 → ZG8	MB6-J38	K6-E38																

For the alterations above, the thickness around the hole machining requires at least 1 mm.

Alterations	Chamfering	Through Hole Machining for Locating Pin	Height Accuracy	Marking (V Groove)
	CA/CB/CC/CD/CT	LPH	ZKC	VK
Code				
Spec.	<p>Chamfers the receiving surface or the bottom surface. - Chamfering Area: Select the area from CA/CB/CC/CD/CT. - Chamfering Width: Specify 1, 3, 5 or 10. Ordering Code: CA5</p>	<p>Additional through hole for a locating pin in the shaded area including the workpiece receiving surface - LPH = $\varnothing 6$ to $\varnothing 14$ in 0.5 mm increments - X = 0.1 mm increments Misalignment of 0.2 mm or less occurs when the height of the receiving surface is larger than $\varnothing \times 8$. Combination with MB or K is not available. Ordering Code: LPH7-X38</p>	<p>Changes the A and D dim. tolerance to ± 0.03. Ordering Code: ZKC</p>	<p>Adds a V groove marking line on the receiving surface. - V Groove Width 0.5 mm, Depth 0.2 mm - Will be evenly distributed along the length/width of the receiving surface. Width tolerance is ± 0.2 and depth tolerance is ± 0.1. Ordering Code: VK</p>