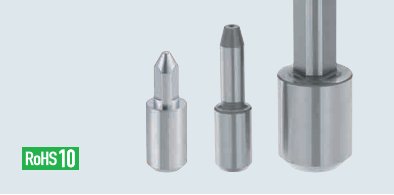


# Locating Pins (Small Head)

Configurable Pilot Head / D, P Tolerance Selectable

Ⓛ D=5 is now available for Tapped Type.

## Locating Pins – Configurable Pilot Head / D, P Tolerance Selectable



RoHS 10

Materials No.	Material	Surface Treatment	Hardness	Standard		Tapped	
				Type	Shape Code	Type	Shape Code
(1)	O1 Tool Steel Equivalent	—	60-63 HRC min.	KFS		KFST	
(2)	O1 Tool Steel Equivalent	Chrome Plating	50-55 HRC min. Plating Hardness 750 HV min.	GKFS	A	GKFST	A
(4)	304 Stainless Steel Equivalent	—	—	SKFS	D	SKFST	D
(5)	304 Stainless Steel Equivalent	Chrome Plating	Plating Hardness 750 HV min.	HKFS		HKFST	
(6)	440C or 420 Stainless Steel	—	50-55 HRC min.	CKFS		CKFST	

Ⓛ Refer to the available types list to select the available combination.

Ⓛ When D=P,

(1) Round Shape has no relief.

(i) When D=P and tolerances are different

## Tolerance Selection

D or P	Standard Grade					Precision Grade		
	m6	p6	g6	h7	s7	A	B	
1.00	+0.008	+0.012	-0.002	0	0	+0.005	0	
3.00	+0.002	+0.006	-0.008	-0.010				
3.01	+0.012	+0.020	-0.004	0				
6.00	+0.004	+0.012	-0.012	-0.012				
6.01	+0.015	+0.024	-0.005	0	0	+0.005	0	
10.00	+0.006	+0.015	-0.014	-0.015	-0.01			
10.01	+0.018	+0.029	-0.006	0				
18.00	+0.007	+0.018	-0.017	-0.018				
18.01	+0.021	+0.035	-0.007	0				
20.00	+0.008	+0.022	-0.020	-0.021				

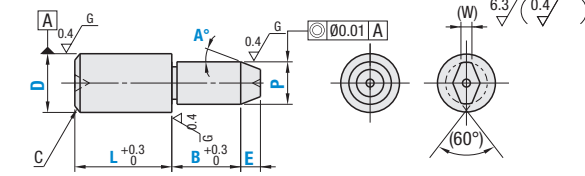
Ⓛ Precision Grade Tolerance is not available for Chrome Plated product types

Ⓛ 440C or 420 Stainless Steel has an identification groove on D part.

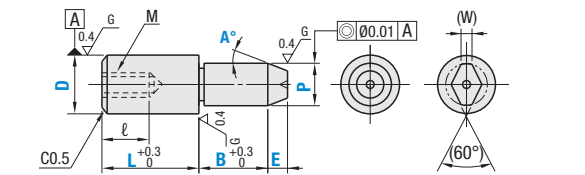
Ⓛ P-2EtanA≥0.73 (Tip dia. 00.73 or more)

Reference: tan15°=0.267 tan30°=0.577  
tan45°=1 tan60°=1.732

### Standard



### Tapped



Ⓛ Straight Round Type for which D=P is standardized is available. P.1612

## Standard

Type	Shape	D Tol. Selection	P Tol. Selection	D	P 0.01 mm Inc.	L 1 mm Inc.	B 0.1 mm Inc.	E 0.1 mm Inc.	A Selection	C	(W)	Available Types for Round Shape						Available Types for Diamond Shape											
												(1)	(2)	(4)	(5)	(6)	(1)	(2)	(4)	(5)	(6)								
KFS GKFS* SKFS HKFS* CKFS	A Round	M P G H	S M P G H	2	1.00-2.00	2-5	2.0-10.0				0.3		•	•	•	•	•												
				3	1.00 (2.00)-3.00	3-10	2.0-10.0						0.5	1.0	•	•	•	•	•	•	•								
				4	1.00 (2.00)-4.00	4-10	2.0-10.0						1.0	1.0	•	•	•	•	•	•	•	•							
				5	2.00-5.00	5-10	2.0-15.0 (10.0)						1.2	1.2	•	•	•	•	•	•	•	•							
				6	2.00-6.00	5-17	2.0-15.0						1.5	1.5	•	•	•	•	•	•	•	•							
				8	3.00-8.00	8-21	2.0-20.0 (15.0)						1.5	1.8	1.8	•	•	•	•	•	•	•							
				10	3.00-10.00	10-23	3.0-20.0						2.2	2.2	2.2	•	•	•	•	•	•	•							
				12	5.00-12.00	12-24	3.0-30.0 (25.0)						2.5	2.5	2.5	•	•	•	•	•	•	•							
				13	6.00-13.00	13-26	5.0-30.0 (25.0)						3	3	3	•	•	•	•	•	•	•							
				16	10.00-16.00	16-32	5.0-30.0						4	4	4	•	•	•	•	•	•	•							
	20	13.00-20.00	20-40	5.0-30.0						5	5	5	•	•	•	•	•	•	•										
		D Diamond	*A *B	*A *B																									

Ⓛ Chrome plated is not available for Precision Grade \* (Precision Grade A and B). Ⓛ P dimension ( ) and B dimension ( ) are applicable to diamond shape.

# Locating Pins (Small Head)

Configurable Pilot Head / D, P Tolerance Selectable, *continued*

## Tapped

Type	Shape	D Tol. Selection	P Tol. Selection	D	P 0.01 mm Inc.	L 1 mm Inc.	B 0.1 mm Inc.	E 0.1 mm Inc.	A Selection	(W)	M (Coarse)	ℓ	Available Types for Round Shape						Available Types for Diamond Shape									
													(1)	(2)	(4)	(5)	(6)	(1)	(2)	(4)	(5)	(6)						
KFST GKFST SKFST HKFST CKFST	A Round	M P G H	S M P G H	5	3.00-5.00	8-10	2.0-15.0 (10.0)				1.2	M2	3	•	•	•	•	•	•	•	•	•	•	•				
				6	4.00-6.00	8 (9)-17	2.0-15.0						1.5	M3	5	•	•	•	•	•	•	•	•	•	•	•		
				6T	4.00-6.00	8 (9)-17	2.0-15.0						1.5	M2.6	4	•	•	•	•	•	•	•	•	•	•	•	•	
				8	6.00-8.00	11 (12)-21	2.0-30.0 (15.0)						1.8	M5	8	•	•	•	•	•	•	•	•	•	•	•	•	
				8T	6.00-8.00	11 (12)-21	2.0-30.0 (15.0)						1.8	M4	6	•	•	•	•	•	•	•	•	•	•	•	•	
				10	7.00-10.00	11 (12)-23	3.0-30.0 (25.0)						2.2	M5	8	•	•	•	•	•	•	•	•	•	•	•	•	
				12	7.00-12.00	12-24	3.0-30.0 (25.0)						2.5				•	•	•	•	•	•	•	•	•	•	•	
				13	8.00-13.00	13 (14)-26	5.0-30.0 (25.0)						3				•	•	•	•	•	•	•	•	•	•	•	
				16	10.00-16.00	16-32	5.0-30.0						4				•	•	•	•	•	•	•	•	•	•	•	
				20	13.00-20.00	20-40	5.0-30.0						5				•	•	•	•	•	•	•	•	•	•	•	

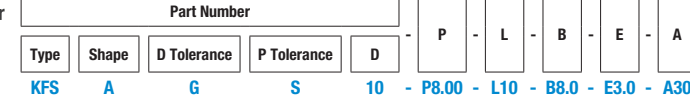
Ⓛ P dimension ( ) and B dimension ( ) are applicable to diamond shape.

Ⓛ Pins with D value ending in T (ex. 8T) have one size smaller thread diameter and larger wall thickness. (Actual D dimension is the number without "T").

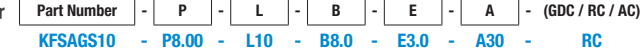
Ⓛ Note the strength of under-head part. P.1542 Ⓛ Please confirm pilot hole depth on P.1542. Holes may go through.



### Part Number Example



### Part Number Alterations



Alterations	Insertion Guide Machining	Radius	Air Vent
Code	GDC	RC	AC
Spec.	Adds Insertion Guide. Ordering Code: GDC. Ⓛ Not applicable to D≤2	Changes the relief to R0.5. Ordering Code: RC. Ⓛ Applicable when D-P≥2.	Adds an air vent. Ordering Code: AC. D=0.15