



# Locating Pins (Small Flat Head)

D & P Tolerance Selectable

## Locating Pins – Small Flat Head / D & P Tolerance Selectable



RoHS10

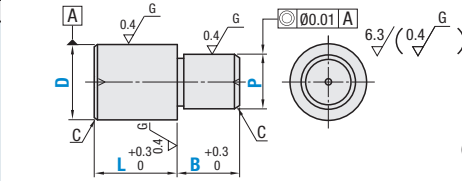
Material No.	Material	Surface Treatment	Hardness	Type	
				Standard	Tapped
(1)	01 Tool Steel Equivalent	—	60–63 HRC min.	KFFSA	KFFSTA
(2)	01 Tool Steel Equivalent	Chrome Plating	50–55 HRC min. Plating Hardness 750 HV min.	GKFFSA	GKFFSTA
(3)	01 Tool Steel Equivalent	—	—	BKFFSA	BKFFSTA
(4)	304 Stainless Steel Equivalent	—	—	SKFFSA	SKFFSTA
(5)	304 Stainless Steel Equivalent	Chrome Plating	Plating Hardness 750 HV min.	HKFFSA	—
(6)	440C or 420 Stainless Steel	—	50–55 HRC min.	CKFFSA	CKFFSTA

### Tolerance Selection

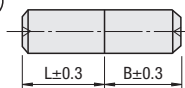
D or P	Standard Grade				Precision Grade		
	M	P	G	H	S	A	B
1.50–3.00	+0.008	+0.012	-0.002	0	—	—	—
3.01–6.00	+0.002	+0.006	-0.008	-0.010	—	—	—
6.01–10.00	+0.012	+0.020	-0.004	0	—	—	—
10.01–18.00	+0.004	+0.012	-0.012	-0.012	0	+0.005	0
18.01–30.00	+0.015	+0.024	-0.005	0	-0.01	0	-0.005
	+0.006	+0.015	-0.014	-0.015	—	—	—
	+0.018	+0.029	-0.006	0	—	—	—
	+0.007	+0.018	-0.017	-0.018	—	—	—
	+0.021	+0.035	-0.007	0	—	—	—
	+0.008	+0.022	-0.020	-0.021	—	—	—

⊗ Precision Grade Tolerance is not available for Chrome Plated Product Types.

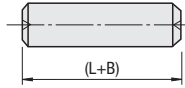
### Standard



⊙ When D=P, no relief is applied.  
(i) When D=P and tolerances are different

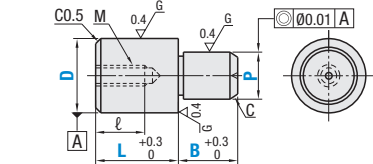


(ii) When D=P and tolerances are the same



(L+B) is the general tolerance.

### Tapped



⊙ 440C or 420 Stainless Steel has an identification groove on D part.

### Standard

Type	Part Number			D	P 0.01 mm Increment	L 1 mm Increment	B 0.1 mm Increment	C
	D Tolerance Selection	P Tolerance Selection						
KFFSA GKFFSA* BKFFSA SKFFSA HKFFSA* CKFFSA	M P G H *A *B	S M P G H *A *B	2	1.50–2.00	2–5	2.0–10.0	0.1	
			3	1.50–3.00	3–10	2.0–10.0		
			4	2.00–4.00	4–10	2.0–10.0		
			5	2.00–5.00	5–10	2.0–15.0	0.5	
			6	2.00–6.00	5–17	4.0–15.0		
			8	3.00–8.00	8–21	6.0–20.0		
			10	3.00–10.00	10–23	6.0–20.0	1	
			12	5.00–12.00	12–24	6.0–30.0		
			13	6.00–13.00	13–26	6.0–30.0		
			16	10.00–16.00	16–32	7.0–30.0	1.5	
			20	13.00–20.00	20–40	7.0–30.0		

⊗ Precision Grade Tolerance is not available for Chrome Plated Product Types.

### Tapped

Type	Part Number			D	P 0.01 mm Increment	L 1 mm Increment	B 0.1 mm Increment	M	ℓ	C	
	D Tolerance Selection	P Tolerance Selection									
KFFSTA GKFFSTA BKFFSTA SKFFSTA CKFFSTA	M P G H	S M P G H	6	4.00–6.00	8–17	4.0–15.0	4.0–15.0	M3	5	0.5	
			6T					M2.6	4		
			8	6.00–8.00	11–21	6.0–30.0	6.0–30.0	6.0–30.0	M5	8	1
			8T						M4	6	
			10	7.00–10.00	11–23	6.0–30.0	6.0–30.0	6.0–30.0	M5	8	1.5
			12							7.00–12.00	
			13	8.00–13.00	13–26	6.0–30.0	6.0–30.0	6.0–30.0	M8	10	2
			16	10.00–16.00	16–32	7.0–30.0					
			20	13.00–20.00	20–40	7.0–30.0					

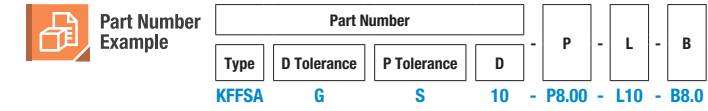
⊙ Pins with D value ending in T (ex. 8T) have one size smaller thread diameter and larger wall thickness. (Actual D dimension is the number without "T".)

⊙ Note the strength of under-head part. P.1542

⊙ Please confirm pilot hole depth on P.1542. Holes may go through.

# Locating Pins (Small Flat Head)

D & P Tolerance Selectable, continued



Alterations	Radius	Wrench Hole	Air Vent	Insertion Guide	C Chamfered																																					
	Code	RC	LAC	AC	GDC	CN																																				
Spec.	Changes the relief to R0.5. - Ordering Code: RC - Applicable when P-D <sub>2</sub> ≥2	Machines wrench hole. - Ordering Code: LAC - Applies to D <sub>2</sub> ≥8 - Can not be used with RC - Press fit is not applicable	Adds an air vent. Ordering Code: AC	Adds the insertion guide. Ordering Code: GDC - Not applicable when D <sub>2</sub> ≥2	Changes C Chamfering at P dimension part to 0.5 or less. Ordering Code: CN - Standard D <sub>2</sub> ≥4 - Tapped D <sub>2</sub> ≥8 - Not applicable to D dimension part.																																					
		<table border="1"> <thead> <tr> <th>D</th> <th>B Applicable Dim.</th> <th colspan="2">Wrench Hole Dim.</th> </tr> <tr> <th></th> <th></th> <th>P</th> <th>Q</th> </tr> </thead> <tbody> <tr> <td>8, 8T</td> <td>8.0–</td> <td>6.00–9.99</td> <td>2</td> </tr> <tr> <td>10</td> <td>8.0–</td> <td>10.00–15.99</td> <td>3.5</td> </tr> <tr> <td>12</td> <td>8.0–</td> <td>16.00–</td> <td>5</td> </tr> <tr> <td>13</td> <td>9.0–</td> <td></td> <td></td> </tr> <tr> <td>16</td> <td>9.0–</td> <td></td> <td></td> </tr> <tr> <td>20</td> <td>10.0–</td> <td></td> <td></td> </tr> </tbody> </table>	D	B Applicable Dim.	Wrench Hole Dim.				P	Q	8, 8T	8.0–	6.00–9.99	2	10	8.0–	10.00–15.99	3.5	12	8.0–	16.00–	5	13	9.0–			16	9.0–			20	10.0–				<table border="1"> <thead> <tr> <th>D</th> <th>ℓ</th> </tr> </thead> <tbody> <tr> <td>3–6</td> <td>1</td> </tr> <tr> <td>8–20</td> <td>2</td> </tr> </tbody> </table>	D	ℓ	3–6	1	8–20	2
D	B Applicable Dim.	Wrench Hole Dim.																																								
		P	Q																																							
8, 8T	8.0–	6.00–9.99	2																																							
10	8.0–	10.00–15.99	3.5																																							
12	8.0–	16.00–	5																																							
13	9.0–																																									
16	9.0–																																									
20	10.0–																																									
D	ℓ																																									
3–6	1																																									
8–20	2																																									