



# Blind Joint Components

-Simple Joint Kits-

Alterations necessary to use this component

Tapping  
→P647

CAD Data

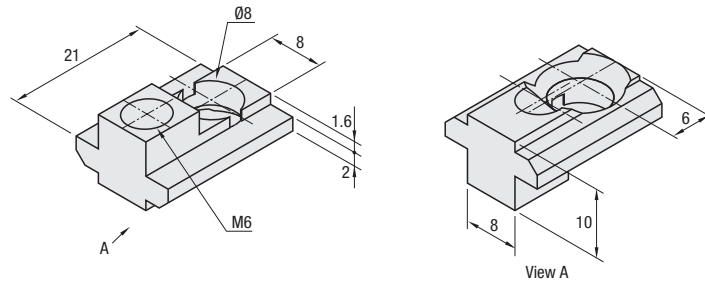
**Features:** Only end tapping is required on extrusions. Simple joints with good workability.

RoHS10

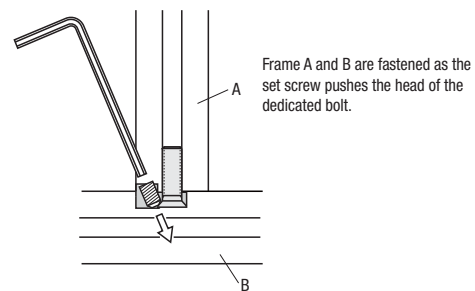
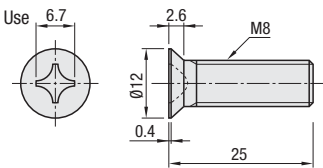
Name of Parts	Material	Surface Treatment
Body	1.1191/C45E	Trivalent Chromate
Dedicated Screws		Trivalent Chromate
Set Screw	1.7220/34CrMo4	Black Oxide

HUJ (Simple Joint Kit)

(1) Simple Joint Body (Set Screw Included)



(2) Bolts for Exclusive Use



(Reference) Corner section when using this joint



Part Number		Components		HUJ	
Type	No.			€ Unit Price	Volume Discount Rate
HUJ	6	(1) Simple Joint Body (Set Screw Included)	(2) Bolts for Exclusive Use	300	100-285



Part Number  
**HUJ6**  
6 Days P87

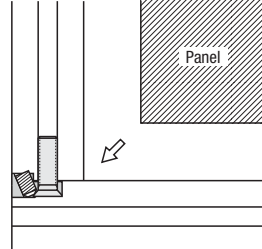
Simple Joint	Applicable Extrusion No.			
HUJ6	6-3030	6-3060	6-3090*	6-30120*
	6-5050			
	6-6060			

\*Rectangle frame might have less fastening points depending on the direction of fastening. (Refer to the example of using HFS6-3090 on the next page.)

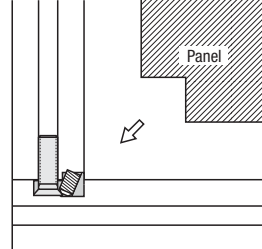


**Example** To insert a panel into extrusion slots, notching may be required depending on the direction Simple Joint is mounted.

Example of the case when panel notches are unnecessary



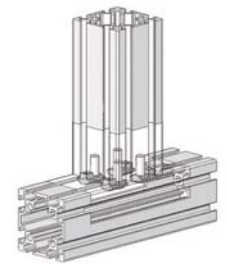
Example of the case when panel notches are necessary



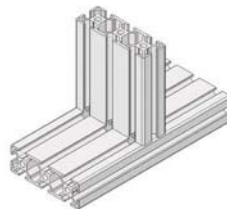
**Simple Joint Connection** (Connected on the extrusion corner or in the middle)

Step	Side view	Sketch Drawing
1	<p><b>HUJ6</b> (1) Simple Joint Body (2) Bolts for Exclusive Use/Tapping</p>	<p>Tapping HFS6-3030-1000-LTP A</p>
2	<p>Do not tighten bolts too much, or they will not fit into the slot of Extrusion (B).</p>	<p>Enlarged View Loosen the bolt head for a half revolution from the condition of the bolt fully inserted to keep some allowance at X part.</p>
3		<p>B HFS6-3030-1000</p>
4	<p>Hexagonal Wrench</p>	<p>Tighten the set screw of Simple Joint Body with a hexagonal wrench and the steps are finished.</p>

<Example of HFS6-6060>  
- Using 4 simple joints



<Example of HFS6-3090(1)>  
- Using 3 simple joints



<Example of HFS6-3090(2)>  
- 2 easy joints are used in this example.

