

Blind Joint Components

-Pre-Assembly Insertion Double Joint Kits-

Alterations necessary to use this component

S type hole alteration
→P655

CAD Data

■ **Features:** Two screws are used for connecting. Can be used to extend extrusions as well as mounting to plates. A joint type superior in mounting flexibility.

■ Pre-Assy. Insertion Double Joint Kits -Standard Type-

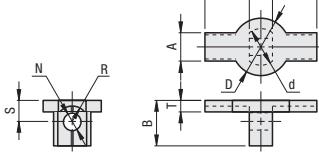


■ Pre-Assy. Insertion Double Joint Kits -Eccentric Nut Type-

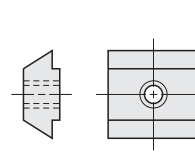


HDJSN

(1) Pre-Assembly Insertion Double Joint
HDJFSN
(1.4401/X5CRNiMo17-12-2
Equivalent, Sintering)



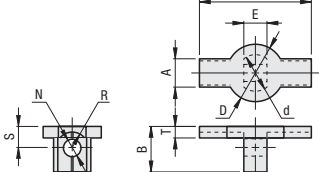
(2) Pre-Assembly Insertion Nut
HNTTSN
(1.4401/X5CRNiMo17-12-2
Equivalent, Sintering)
Electrically conductive



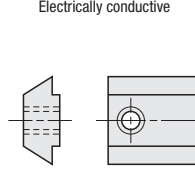
HDJHSN

(Eccentric Nut Type)

(1) Pre-Assembly Insertion Double Joint
HDJFSN
(1.4401/X5CRNiMo17-12-2
Equivalent, Sintering) L



(2) Pre-Assembly Insertion Eccentric Nut
HNTHSN
(1.4401/X5CRNiMo17-12-2
Equivalent, Sintering)
Electrically conductive



Pre Assy. Insertion Double Joints	Part Number	Usable in any direction.	Usable in the short length direction	Usable in the long length direction.	Usable in the direction of the slot	Usable in the direction of the slot (if no fit surface at the connecting part).
HDJSN6 HDJHSN6 HDJFSN6	3030	0				
	3060	0				
	3090	0				
	HFS6 30120	0	0			
	GF56 5050	0				
	EF56 50100	0				
	CAF6 100100	0				
	HFSY6 6060	0				
	6090	0				
	60120	0				
	3030			0	0	
	HFS6 3060			0	0	
	EF56 5050			0	0	
	6060			0	0	
	HFSH6 3030			0	0	
	EF5H6 3060			0	0	
	HFSL6 3030	0				
	3060	0				
	HFSG6 6060	0				
	3030	0				
3060	0					
HFSB6 3090	0					
EF5B6 30120	0					
5050	0					
6060	0					
HFSFB6 3030					0	
EF5FB6 3060						
HFSLB6 3030	0					
3060	0					
HDJSN6 HDJHSN6 HDJFSN6	4040	0				
	4080	0				
	40120		0			
	40160		0			
	CAF3 8080	0				
	HFSY3 8080	0				
	80160	0				
	HFSH3 8020	0				
	HFSF3 4040				0	
	GF3F3 4080				0	
	EF3F3 8080				0	
	HFSH8 4040				0	
	EF5H8 4080				0	0
	4040			0		
	4080					
	40120		0			
	40160		0			
	8020	0				
	80160	0				
	HFSFB8 4040					0
4040						
4080						
HFSLB8 4040						
4080						
4545	0					
4590	0					
45180	0	0				
HFS3 5050	0					
GF33 50100	0					
EF33 6060	0					
9090	0					
90180	0					
HDJSN6-45 HDJHSN6-45 HDJFSN6-45	4545					0
	4590				0	0
	45050				0	0
	6060				0	0
	6060					0
	HFSH6 4545					0
	EF5H6 4545					
	4545	0				
	4590	0				
	HFSLF3 4545				0	
HDJSN6 HDJHSN6 HDJFSN6	4545					
	4590					
	45050					
	5050					
	50100					
	50100					
	90180					
	9090	0				
	90180	0				
	HFSFB8 4545					0
HDJSN6 HDJHSN6 HDJFSN6	4545	0				
	4590	0				
	4545				0	
	4590					
	5050	0				
	50100	0				
	90180					
	9090	0				
	90180	0				
	HFSFB8 4545					0
HDJSN6 HDJHSN6 HDJFSN6	4545					
	4590					
	45050					
	5050					
	50100					
	50100					
	90180					
	9090	0				
	90180	0				
	HFSFB8 4545					0

Not applicable to extrusions not listed above.