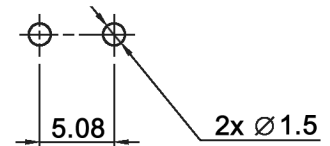


P.C.B. LAYOUT

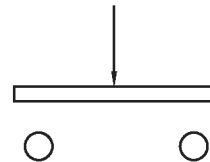


Specifications:

- Contact rating: 1A, 120 AC or 28V DC
- Contact resistance: 30mOhm max.
- Insulation resistance: 100MOhm min. at 500V DC
- Operating temperature: -20°C to +70°C
- Mechanical life: 10 000 cycles
- Operating force: 650 +/- 150gf max.
- Switching function: on - off
- Included accessories: 1 pc. tooth washer
1 pc. nut

- Material: Case: brass, nickel plated
Actuator: PA66
Base: POM
Contacts: phosphor bronze, silver plated over nickel
Terminals: brass, silver plated over nickel

SCHEMATIC



Tolerances: 0.00: ±0.25mm 0.0: ±0.40mm	Date	Name
	05/09	dr
Material	05/09	dr
Modifications	Date	Name

MSP 101 A

30 18 25

Page

1/1

knitter-switch