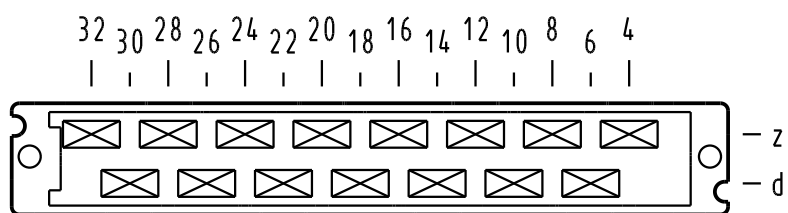


Alle Rechte vorbehalten. All rights reserved

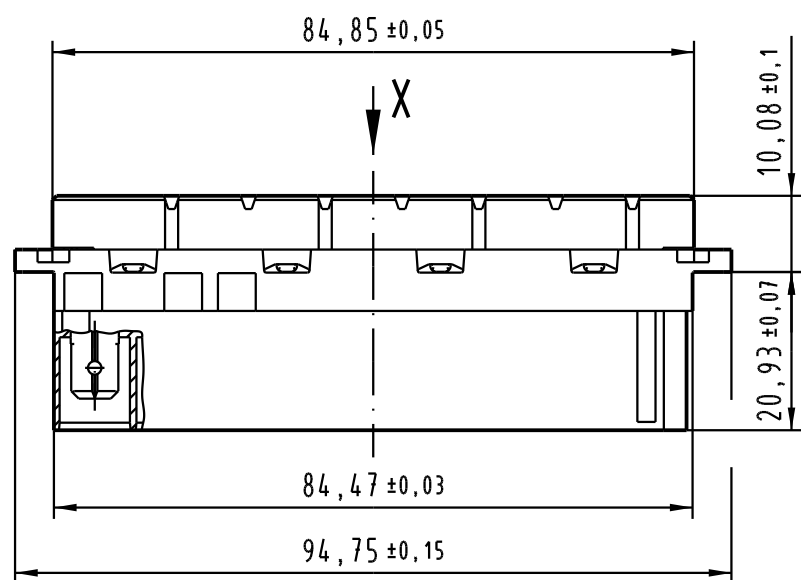
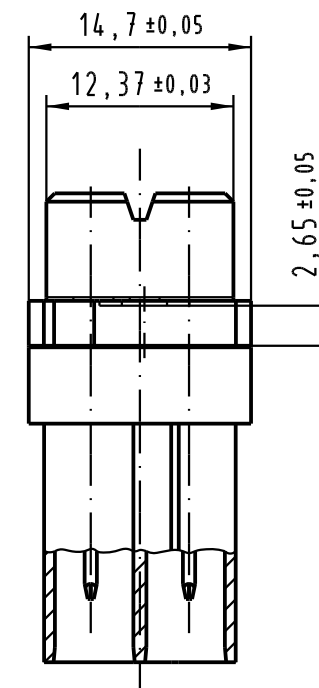
**X** Kontaktanordnung/ *contact arrangement*



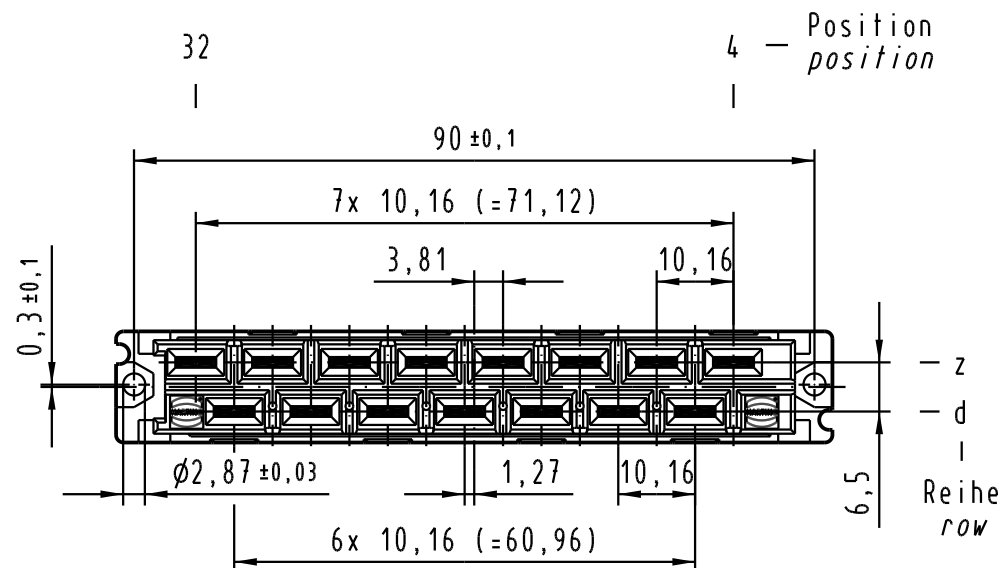
15 Kontakte  
15 contacts

- = Kontaktposition belegt  
= *position with contact*
- = Kontaktposition nicht belegt  
= *position without contact*

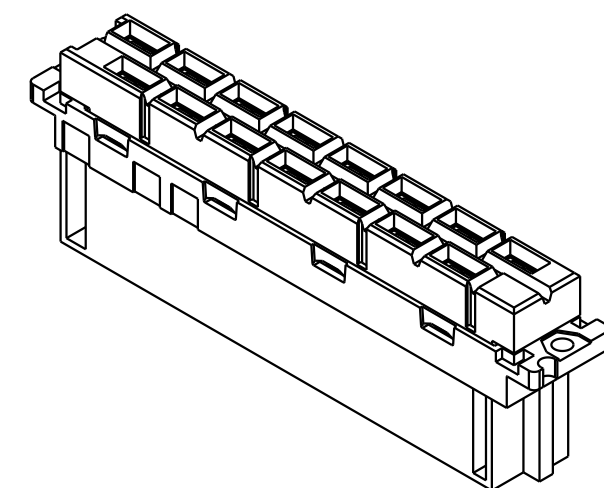
**Z**  
2:1



**Z**



Kontaktfläche Ag  
*contact surface Ag*



All Dimensions in mm Original Size DIN A 3		Techn. Character. IEC 60603-2			Nicht tolerierte Maß/Free size tolerances IEC 60603-2	
		Dat. 25.11.04		Name Leh.		<b>1:1</b> <b>2:1</b>
		Insp. 25.11.04		Name kfoe		
		Stand.				
32417 Mod.		Dat.		Name		<b>HARTING</b>
				HARTING Electronics GmbH & Co. KG D-32339 ESPELKAMP		
				TB 09 06 215 2871		Blatt / page
				Sub.TB 09 06 215 2871 Mod.11444 v.22.03.91		