

## D-SUB contact support - VS-09-ST-DSUB-2P - 1688418

Please be informed that the data shown in this PDF Document is generated from our Online Catalog. Please find the complete data in the user's documentation. Our General Terms of Use for Downloads are valid (<http://download.phoenixcontact.com>)



D-SUB contact carrier, shell size 1, accommodation for two combined contacts, contact type pin, straight, fixing with a 3 mm hole, for panel mounting frame and sleeve housing VS-09-...

### Key commercial data

|                         |               |
|-------------------------|---------------|
| <b>package_quantity</b> | 10            |
| <b>GTIN</b>             | 4017918818340 |

### Technical data

#### Mechanical characteristics

|                                    |                                    |
|------------------------------------|------------------------------------|
| <b>Number of positions</b>         | 2                                  |
| <b>Insertion/withdrawal cycles</b> | ≥ 500                              |
| <b>Connection method</b>           | Fitting to accept combined contact |

#### Ambient conditions

|  |                   |
|--|-------------------|
| <b>Ambient temperature (operation)</b> | -55 °C ... 125 °C |
|--|-------------------|

#### Material data

|  |                         |
|--|-------------------------|
| <b>Inflammability class according to UL 94</b> | V0                      |
| <b>Housing material</b>                        | Steel, yellow chromated |
| <b>Contact carrier material</b>                | PBTP                    |
| <b>Contact surface material</b>                | Gold over nickel        |

### classifications

#### eCl@ss

|                   |          |
|-------------------|----------|
| <b>eCl@ss 4.0</b> | 27140816 |
| <b>eCl@ss 4.1</b> | 27260701 |
| <b>eCl@ss 5.0</b> | 27260701 |
| <b>eCl@ss 5.1</b> | 27260701 |
| <b>eCl@ss 6.0</b> | 27261203 |
| <b>eCl@ss 7.0</b> | 27440202 |
| <b>eCl@ss 8.0</b> | 27440202 |

#### ETIM

|                 |          |
|-----------------|----------|
| <b>ETIM 2.0</b> | EC000437 |
| <b>ETIM 3.0</b> | EC000437 |

# D-SUB contact support - VS-09-ST-DSUB-2P - 1688418

## classifications

### ETIM

|                 |          |
|-----------------|----------|
| <b>ETIM 4.0</b> | EC000437 |
| <b>ETIM 5.0</b> | EC000437 |

### UNSPSC

|                      |          |
|----------------------|----------|
| <b>UNSPSC 6.01</b>   | 31261501 |
| <b>UNSPSC 7.0901</b> | 31261501 |
| <b>UNSPSC 11</b>     | 31261501 |
| <b>UNSPSC 12.01</b>  | 31261501 |
| <b>UNSPSC 13.2</b>   | 31261501 |

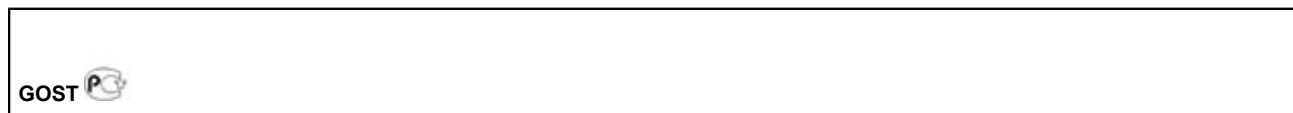
## approvals

---

GOST /

---

### Approval details



## accessories

### Screw contact

VS-ST-SC-2,6 - 1655483



### Solder contact

VS-ST-KX-50-RG178 - 1655506



## D-SUB contact support - VS-09-ST-DSUB-2P - 1688418

### accessories

VS-ST-KX-50-RG174 - 1655548



VS-ST-KX-50-RG58 - 1655580



VS-ST-KX-75-RG179/187 - 1655629



VS-ST-LK-3,6/22,4/2,6 - 1688243



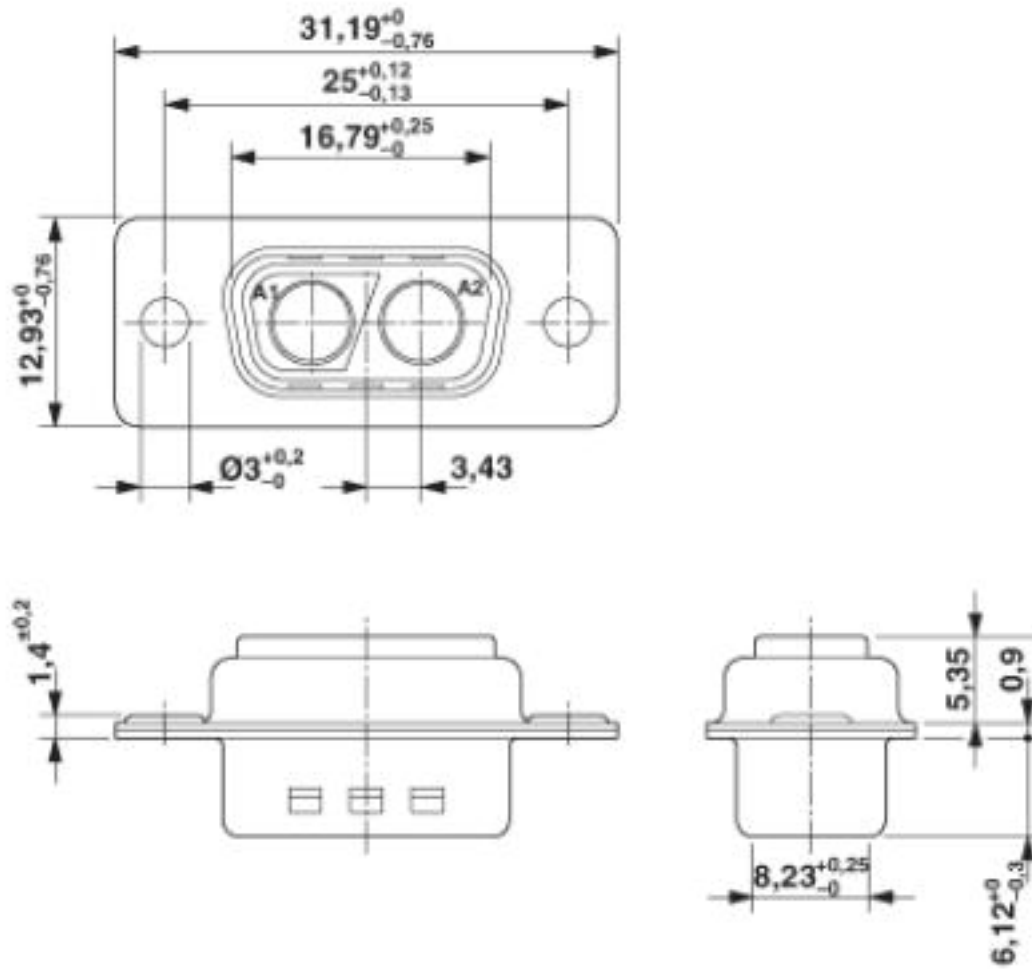
VS-ST-LK-3,6/22,4/4,6 - 1688269



### Drawings

# D-SUB contact support - VS-09-ST-DSUB-2P - 1688418

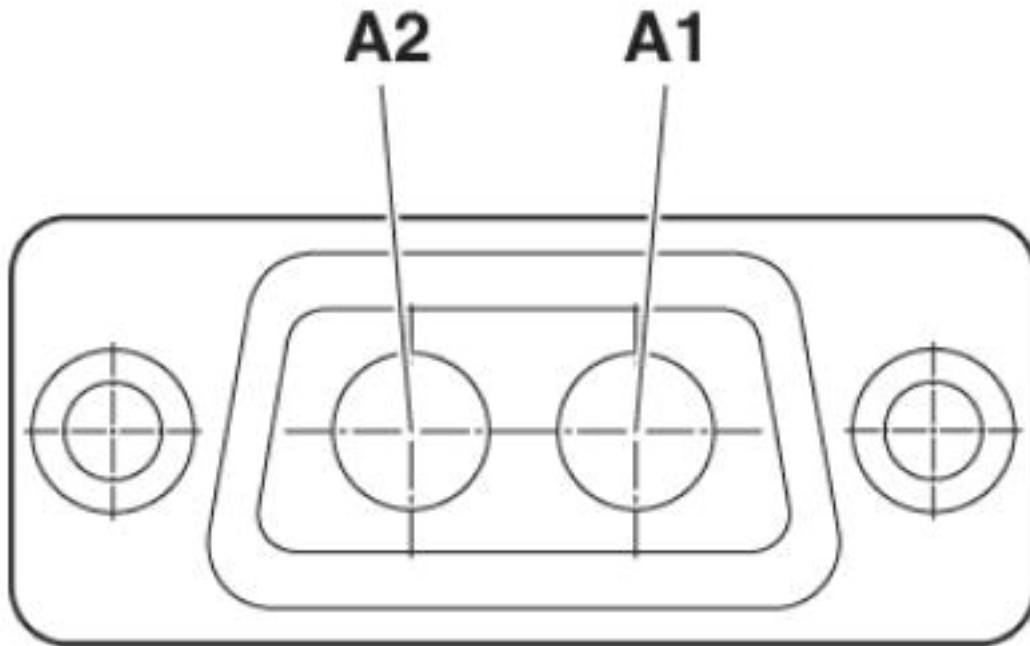
Dimensioned drawing



D-SUB contact carrier

# D-SUB contact support - VS-09-ST-DSUB-2P - 1688418

Schematic diagram



© Phoenix Contact 2013 - all rights reserved  
<http://www.phoenixcontact.com>