



Figure similar

ENCLOSURE FOR COMMAND DEVICES, 22MM, ROUND, ENCLOSURE MATERIAL PLASTIC, ENCLOSURE TOP PART YELLOW, 1 COMMAND POINT PLASTIC, WITH PROTECTIVE COLLAR, A=EM. STOP MUSH. PUSHB. RED, 40MM, ROTATE TO UNLATCH, 1NC, SCREW TERMINAL, BASE MOUNTING,

<b>product brand name</b>	SIRIUS ACT
<b>Product designation</b>	Commanding and signaling devices
<b>Design of the product</b>	Enclosure
<b>Manufacturer article number</b>	
<ul style="list-style-type: none"> <li>• of supplied contact module</li> <li>• of the supplied holder</li> <li>• of the supplied actuator</li> <li>• of supplied empty enclosure</li> </ul>	<p>A1 = 3SU1400-2AA10-1CA0</p> <p><a href="#">3SU1500-0AA10-0AA0</a></p> <p>A = 3SU1000-1HB20-0AA0</p> <p><a href="#">3SU1801-0AA00-0AC2</a></p>

Enclosure:	
<b>Design of the housing</b>	with protective collar
<b>Shape of the enclosure front</b>	Square
<b>Material of the enclosure</b>	plastic
<b>Number of control points</b>	1
<b>Product component</b>	
<ul style="list-style-type: none"> <li>• EMERGENCY STOP device</li> <li>• protective collar</li> </ul>	<p>No</p> <p>No</p>
<b>Color</b>	
<ul style="list-style-type: none"> <li>• of top part of the enclosure</li> </ul>	yellow
<b>Delivery state</b>	
<ul style="list-style-type: none"> <li>• as a kit</li> <li>• pre-wired on strip terminal</li> </ul>	<p>No</p> <p>No</p>
<b>Mounting type of the enclosure</b>	Vertical

Actuator:	
<b>Design of the operating mechanism</b>	Emergency stop mushroom pushbutton
<b>Suitability for use EMERGENCY OFF switch</b>	No

<b>Product feature</b>	
• lockout	No
<b>Product expansion optional Light source</b>	No
<b>Color</b>	
• of the actuating element	Red
<b>Material of the actuating element</b>	plastic
<b>Shape of the actuating element</b>	round
<b>Number of contact modules</b>	1

#### Front ring:

<b>Product component front ring</b>	No
<b>Design of the front ring</b>	Standard

#### Holder:

<b>Material of the holder</b>	Plastic
-------------------------------	---------

#### Display:

<b>Number of LED modules</b>	0
------------------------------	---

#### General technical data:

<b>Product function</b>	
• positive opening	Yes
• EMERGENCY OFF function	Yes
• EMERGENCY STOP function	Yes
<b>Shock resistance</b>	
• acc. to IEC 60068-2-27	Sinusoidal half-wave 50 g / 11 ms
<b>Vibration resistance</b>	
• acc. to IEC 60068-2-6	10 ... 500 Hz: 5g
<b>Protection class IP</b>	IP66, IP67, IP69(IP69K)
<b>Equipment marking</b>	
• acc. to DIN EN 61346-2	S
• acc. to DIN EN 81346-2	S
<b>Design of the fuse link for short-circuit protection of the auxiliary switch with type of assignment 1 required</b>	gG / Dz 10 A, quick-acting / Dz 10 A
<b>Continuous current of the C characteristic MCB</b>	10 A
<b>Operating voltage</b>	
• with AC	
— at 50 Hz Rated value	5 ... 500 V
— at 60 Hz Rated value	5 ... 500 V
• for DC Rated value	
— maximum	500 V
— minimum	5 V

#### Auxiliary circuit:

<b>Number of NC contacts</b>	
------------------------------	--

<ul style="list-style-type: none"> <li>• for auxiliary contacts</li> </ul>	1
<b>Number of NO contacts</b>	
<ul style="list-style-type: none"> <li>• for auxiliary contacts</li> </ul>	0
<b>Number of CO contacts</b>	
<ul style="list-style-type: none"> <li>• for auxiliary contacts</li> </ul>	0
<b>Design of the contact of the auxiliary contacts</b>	Silver alloy

#### Connections/ Terminals:

<b>Type of electrical connection</b>	
<ul style="list-style-type: none"> <li>• of modules and accessories</li> </ul>	Screw-type terminal
<b>Type of electrical connection on enclosure</b>	Cable routing above and below, both 1 x M20
<b>Tightening torque</b>	
<ul style="list-style-type: none"> <li>• with screw-type terminals</li> </ul>	0.8 ... 0.9 N·m

#### Interfaces:

<b>Design of the interface</b>	
<ul style="list-style-type: none"> <li>• for communication</li> </ul>	without

#### Ambient conditions:

<b>Ambient temperature</b>	
<ul style="list-style-type: none"> <li>• during operation</li> </ul>	-25 ... +70 °C
<ul style="list-style-type: none"> <li>• during storage</li> </ul>	-40 ... +80 °C

#### Installation/ mounting/ dimensions:

<b>Mounting type</b>	
<ul style="list-style-type: none"> <li>• of modules and accessories</li> </ul>	Floor mounting
<b>Height</b>	85 mm
<b>Width</b>	85 mm
<b>Depth</b>	112.5 mm
<b>Shape of the installation opening</b>	round

#### Accessories:

<b>Number of labels</b>	0
<b>Marking of the name plate for command devices</b>	A = I

#### Certificates/ approvals:

#### Further information

**Information- and Downloadcenter (Catalogs, Brochures,...)**

<http://www.siemens.com/industrial-controls/catalogs>

**Industry Mall (Online ordering system)**

<http://www.siemens.com/industrymall>

**Cax online generator**

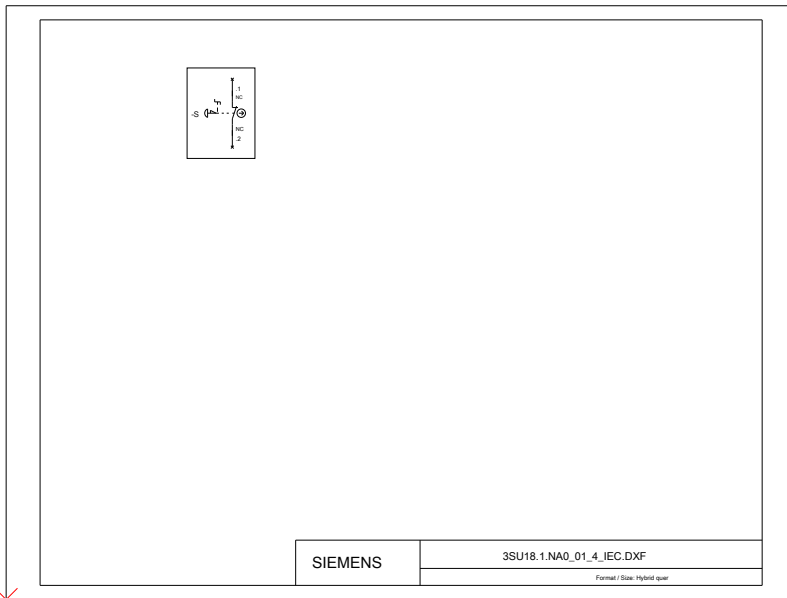
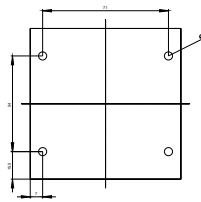
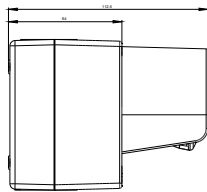
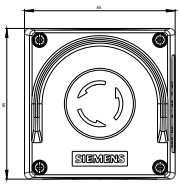
<http://support.automation.siemens.com/WW/CAXorder/default.aspx?lang=en&mlfb=3SU18010NA002AC2>

**Service&Support (Manuals, Certificates, Characteristics, FAQs,...)**

<https://support.industry.siemens.com/cs/ww/en/ps/3SU18010NA002AC2>

**Image database (product images, 2D dimension drawings, 3D models, device circuit diagrams, EPLAN macros, ...)**

[http://www.automation.siemens.com/bilddb/cax\\_de.aspx?mlfb=3SU18010NA002AC2&lang=en](http://www.automation.siemens.com/bilddb/cax_de.aspx?mlfb=3SU18010NA002AC2&lang=en)



last modified:

27.04.2015