



Figure similar

ENCLOSURE FOR COMMAND DEVICES, 22MM, ROUND, ENCLOSURE MATERIAL PLASTIC, ENCLOSURE TOP PART YELLOW, 1 COMMAND POINT PLASTIC, COMMAND POINT AT CENTER, A=EM. STOP MUSH. PUSHB. RED, 40MM, ROTATE TO UNLATCH, 1NC, SCREW TERMINAL, BASE MOUNTING,

product brand name	SIRIUS ACT
Product designation	Commanding and signaling devices
Design of the product	Enclosure
Manufacturer article number	
<ul style="list-style-type: none"> • of supplied contact module • of the supplied holder • of the supplied actuator • of supplied empty enclosure 	A1 = 3SU1400-2AA10-1CA0 3SU1500-0AA10-0AA0 A = 3SU1000-1HB20-0AA0 3SU1801-0AA00-0AA2

Enclosure:	
Design of the housing	Command point in center
Shape of the enclosure front	Square
Material of the enclosure	plastic
Number of control points	1
Product component	
<ul style="list-style-type: none"> • EMERGENCY STOP device • protective collar 	No No
Color	
<ul style="list-style-type: none"> • of top part of the enclosure 	yellow
Delivery state	
<ul style="list-style-type: none"> • as a kit • pre-wired on strip terminal 	No No
Mounting type of the enclosure	Vertical

Actuator:	
Design of the operating mechanism	Emergency stop mushroom pushbutton
Suitability for use EMERGENCY OFF switch	No

Product feature	
• lockout	No
Product expansion optional Light source	No
Color	
• of the actuating element	Red
Material of the actuating element	plastic
Shape of the actuating element	round
Number of contact modules	1

Front ring:

Product component front ring	No
Design of the front ring	Standard

Holder:

Material of the holder	Plastic
-------------------------------	---------

Display:

Number of LED modules	0
------------------------------	---

General technical data:

Product function	
• positive opening	Yes
• EMERGENCY OFF function	Yes
• EMERGENCY STOP function	Yes
Shock resistance	
• acc. to IEC 60068-2-27	Sinusoidal half-wave 50 g / 11 ms
Vibration resistance	
• acc. to IEC 60068-2-6	10 ... 500 Hz: 5g
Protection class IP	IP66, IP67, IP69(IP69K)
Equipment marking	
• acc. to DIN EN 61346-2	S
• acc. to DIN EN 81346-2	S
Design of the fuse link for short-circuit protection of the auxiliary switch with type of assignment 1 required	gG / Dz 10 A, quick-acting / Dz 10 A
Continuous current of the C characteristic MCB	10 A
Operating voltage	
• with AC	
— at 50 Hz Rated value	5 ... 500 V
— at 60 Hz Rated value	5 ... 500 V
• for DC Rated value	
— maximum	500 V
— minimum	5 V

Auxiliary circuit:

Number of NC contacts	
------------------------------	--

<ul style="list-style-type: none"> • for auxiliary contacts 	1
Number of NO contacts	
<ul style="list-style-type: none"> • for auxiliary contacts 	0
Number of CO contacts	
<ul style="list-style-type: none"> • for auxiliary contacts 	0
Design of the contact of the auxiliary contacts	Silver alloy

Connections/ Terminals:

Type of electrical connection	
<ul style="list-style-type: none"> • of modules and accessories 	Screw-type terminal
Type of electrical connection on enclosure	Cable routing above and below, both 1 x M20
Tightening torque	
<ul style="list-style-type: none"> • with screw-type terminals 	0.8 ... 0.9 N·m

Interfaces:

Design of the interface	
<ul style="list-style-type: none"> • for communication 	without

Ambient conditions:

Ambient temperature	
<ul style="list-style-type: none"> • during operation 	-25 ... +70 °C
<ul style="list-style-type: none"> • during storage 	-40 ... +80 °C

Installation/ mounting/ dimensions:

Mounting type	
<ul style="list-style-type: none"> • of modules and accessories 	Floor mounting
Height	85 mm
Width	85 mm
Depth	109 mm
Shape of the installation opening	round

Accessories:

Number of labels	0
Marking of the name plate for command devices	A = I

Certificates/ approvals:

Further information

Information- and Downloadcenter (Catalogs, Brochures,...)

<http://www.siemens.com/industrial-controls/catalogs>

Industry Mall (Online ordering system)

<http://www.siemens.com/industrymall>

Cax online generator

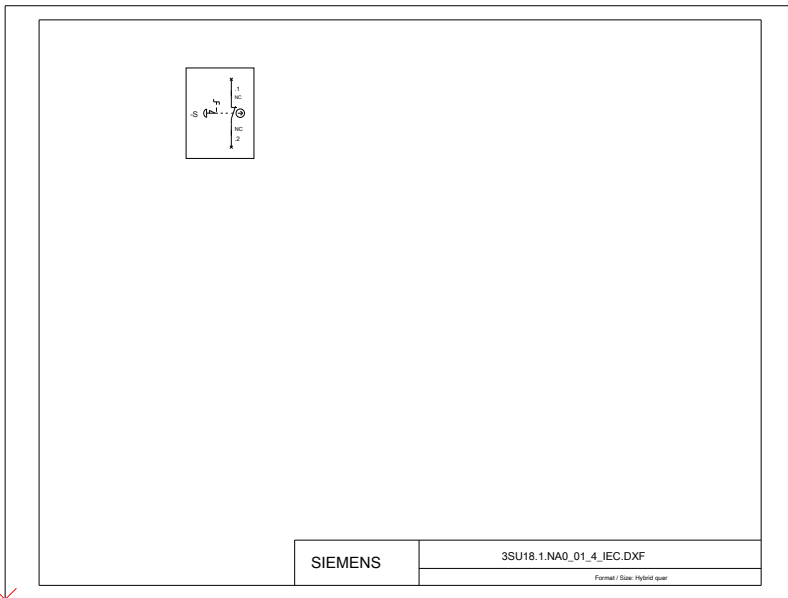
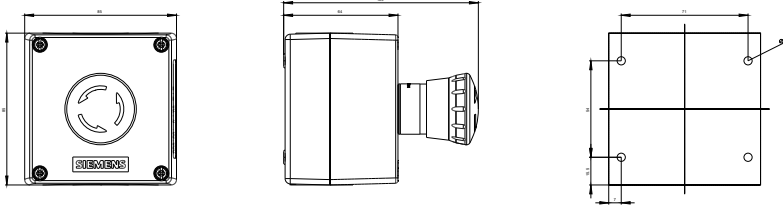
<http://support.automation.siemens.com/WW/CAXorder/default.aspx?lang=en&mlfb=3SU18010NA002AA2>

Service&Support (Manuals, Certificates, Characteristics, FAQs,...)

<https://support.industry.siemens.com/cs/ww/en/ps/3SU18010NA002AA2>

Image database (product images, 2D dimension drawings, 3D models, device circuit diagrams, EPLAN macros, ...)

http://www.automation.siemens.com/bilddb/cax_de.aspx?mlfb=3SU18010NA002AA2&lang=en



last modified:

27.04.2015