



SURGE SUPPRESSOR, RC COUPLING, AC  
127...240V, DC 150...250V, FOR MOTOR  
CONTACTORS SZ S0,

**General technical data:**

<b>product brand name</b>		SIRIUS
<b>Product designation</b>		surge suppressor
<b>Size of contactor</b>		S0
<b>Design of the surge suppressor</b>		with RC elements
<b>Ambient temperature</b>		
• during storage	°C	-40 ... +80
• during operation	°C	-25 ... +60

**Control circuit/ Control:**

<b>Type of voltage of the control supply voltage</b>		AC/DC
<b>Control supply voltage frequency</b>		
• 1 Rated value	Hz	50
• 2 Rated value	Hz	60
<b>Control supply voltage 1</b>		
• for DC		
— Initial rated value	V	150
— Final rated value	V	250
• with AC		
— at 50 Hz Initial rated value	V	127
— at 50 Hz Final rated value	V	240
— at 60 Hz Final rated value	V	240
— at 60 Hz Initial rated value	V	127






**Installation/ mounting/ dimensions:**

<b>mounting position</b>		any
--------------------------	--	-----

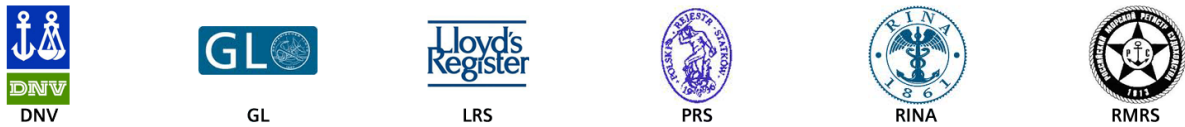
Mounting type		clip-on
Width	mm	30
Height	mm	19
Depth	mm	12

#### Certificates/ approvals:

Certificate of suitability CE / UL / CSA / CCC

General Product Approval	Declaration of Conformity	Test Certificates	Shipping Approval
	 UL	 EG-Konf.	<a href="#">Special Test Certificate</a>  ABS  BUREAU VERITAS

#### Shipping Approval



#### other

[Confirmation](#)

[Environmental Confirmations](#)



#### Further information

**Information- and Downloadcenter (Catalogs, Brochures,...)**

<http://www.siemens.com/industrial-controls/catalogs>

**Industry Mall (Online ordering system)**

<http://www.siemens.com/industrymall>

**Cax online generator**

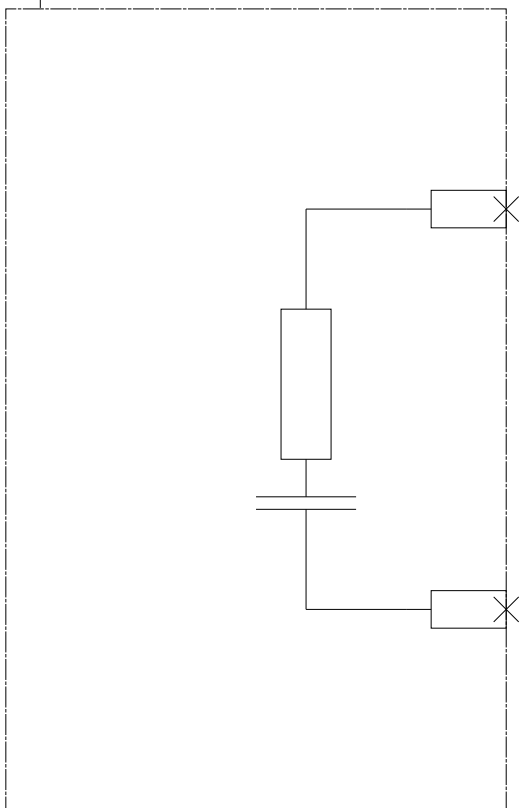
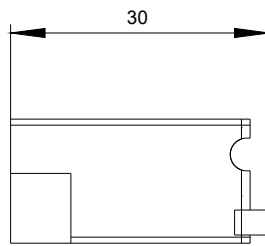
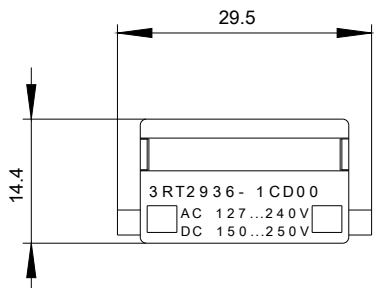
<http://support.automation.siemens.com/WW/CAXorder/default.aspx?lang=en&mlfb=3RT29261CD00>

**Service&Support (Manuals, Certificates, Characteristics, FAQs,...)**

<https://support.industry.siemens.com/cs/ww/en/ps/3RT29261CD00>

**Image database (product images, 2D dimension drawings, 3D models, device circuit diagrams, EPLAN macros, ...)**

[http://www.automation.siemens.com/bilddb/cax\\_de.aspx?mlfb=3RT29261CD00&lang=en](http://www.automation.siemens.com/bilddb/cax_de.aspx?mlfb=3RT29261CD00&lang=en)



last modified:

24.04.2015