



SURGE SUPPRESSOR, SUPPRESSION DIODE DC 12...250V, F. CONT. RELAYS A. MOTOR CONT. SZ S00,

General technical data:

product brand name		SIRIUS
Product designation		surge suppressor
Size of contactor		S00
Design of the surge suppressor		with diode
Ambient temperature		
<ul style="list-style-type: none"> during storage 	°C	-40 ... +80
<ul style="list-style-type: none"> during operation 	°C	-25 ... +60

Control circuit/ Control:

Type of voltage of the control supply voltage		DC
Control supply voltage 1		
<ul style="list-style-type: none"> for DC 		
<ul style="list-style-type: none"> — Initial rated value 	V	12
<ul style="list-style-type: none"> — Final rated value 	V	250

Installation/ mounting/ dimensions:

mounting position		any
Mounting type		clip-on
Width	mm	28
Height	mm	46
Depth	mm	9

Certificates/ approvals:

Certificate of suitability		CE / UL / CSA / CCC
----------------------------	--	---------------------

General Product Approval	Declaration of Conformity	Test Certificates	Shipping Approval
--------------------------	---------------------------	-------------------	-------------------



[Special Test Certificate](#)



Shipping Approval



other

[Confirmation](#)

[Environmental Confirmations](#)



Further information

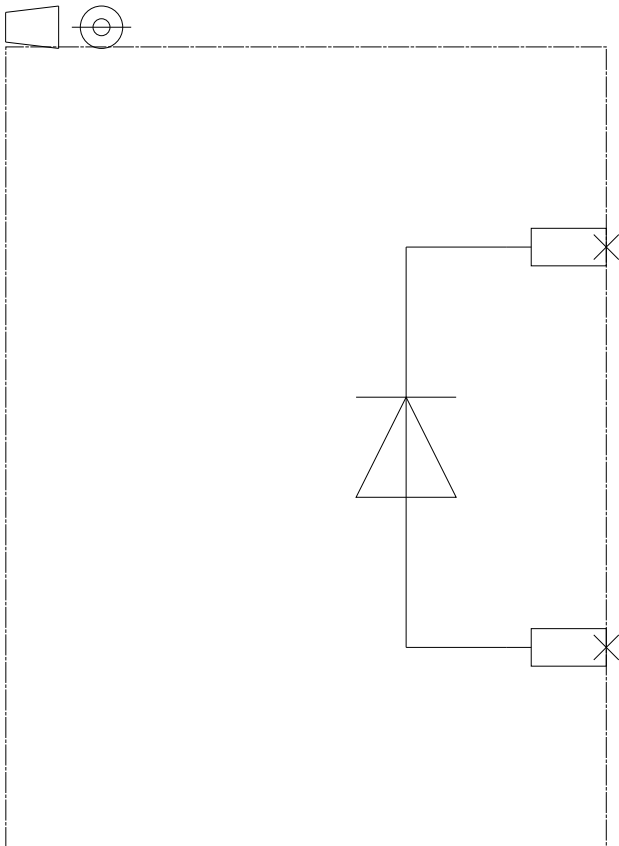
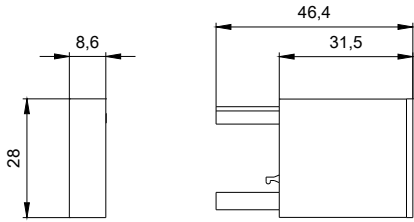
Information- and Downloadcenter (Catalogs, Brochures,...)
<http://www.siemens.com/industrial-controls/catalogs>

Industry Mall (Online ordering system)
<http://www.siemens.com/industrymall>

Cax online generator
<http://support.automation.siemens.com/WW/CAXorder/default.aspx?lang=en&mlfb=3RT29161DG00>

Service&Support (Manuals, Certificates, Characteristics, FAQs,...)
<https://support.industry.siemens.com/cs/ww/en/ps/3RT29161DG00>

Image database (product images, 2D dimension drawings, 3D models, device circuit diagrams, EPLAN macros, ...)
http://www.automation.siemens.com/bilddb/cax_de.aspx?mlfb=3RT29161DG00&lang=en



last modified:

16.04.2015