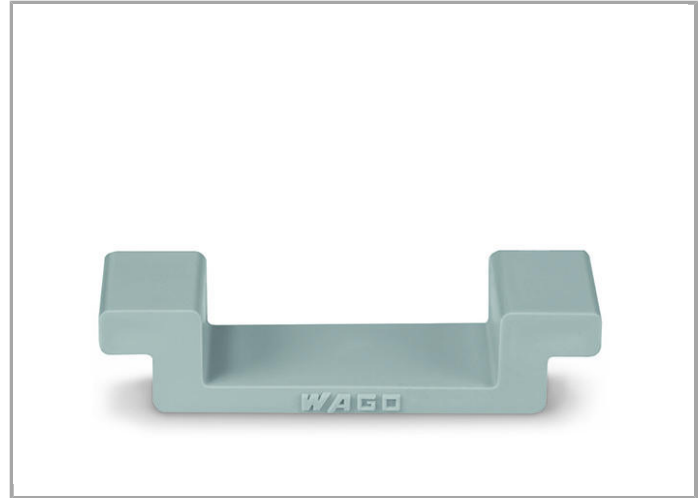


**Data sheet | Item number: 209-109**  
Edge guards; for DIN 35 rail (7.5 mm high)

[www.wago.com/209-109](http://www.wago.com/209-109)



**Data**

**Technical Data**

Main product function

Mounting Accessories

**Geometrical Data**

Abmessungen B x H x T (mm) (10.8 x 11.4 x 39) mm

Width 10.8 mm / 0.425 inch

Abmessungen B x H x T (inch) (0.425 x 0.449 x 1.535) inch

Height 11.4 mm / 0.449 inch

Depth 39 mm / 1.535 inch

**Material Data**

Color gray

Weight	1.29 g
--------	--------

### Commercial data

Country of origin	KR
GTIN	404545481 1389
Customs Tariff No.	39269097900
Product Group	2 (Terminal Block Accessories)

### Compatible products

#### Carrier rail


**Item no.: 210-112**

Steel carrier rail; 35 x 7.5 mm; 1 mm thick; 2 m long; slotted; according to EN 60715; "Hole width 25 mm

[www.wago.com/210-112](http://www.wago.com/210-112)

**Item no.: 210-113**

Steel carrier rail; 35 x 7.5 mm; 1 mm thick; 2 m long; unslotted; according to EN 60715

[www.wago.com/210-113](http://www.wago.com/210-113)

**Item no.: 210-115**

Steel carrier rail; 35 x 7.5 mm; 1 mm thick; 2 m long; slotted; according to EN 60715; "Hole width 18 mm

[www.wago.com/210-115](http://www.wago.com/210-115)

### Downloads

#### Documentation

##### Bid Text

209-109	Oct 9, 2017	DOC 24.1 kB	Download
---------	-------------	----------------	----------

### smartDATA

#### CAD data

3D Download 209-109	URL	Download
---------------------	-----	----------

Subject to changes.