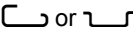



## CF-TV ...



Surge voltage protection for television sets with F connector

Description	Type	Order No.	Pcs. Pkt.
<b>COAXTRAB</b> , surge voltage protection for antenna inputs on television sets with F connector, and for mounting on  or 	<b>CF-TV 30DC-BB</b>	<b>28 18 06 7</b>	1
	<b>CF-TV 30DC-BB-U</b>	<b>28 18 07 0</b>	1

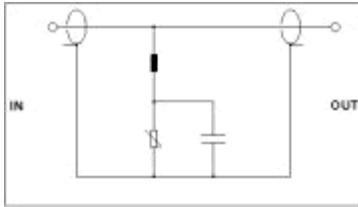
### Technical data

Tested:		in accordance with FTZ 1R8-15
Max. perm. operating voltage $U_{\max}$ :		30 V DC
Nominal current $I_N$ :		2 A / 25 °C
Operating current $I_C$ with $U_{\max}$ :		$\leq 100 \mu\text{A}$
Discharge current to PE with $U_{\max}$ :		$\leq 100 \mu\text{A}$
Nominal discharge surge current $i_{\text{sn}}$ (8/20) $\mu\text{s}$ :		330 A
Output voltage threshold at 1 kV/ $\mu\text{s}$ :	common	$\leq 80 \text{ V}$
Residual voltage with $i_{\text{sn}}$ :	common	$< 140 \text{ V}$
Response time $t_a$ :	common	$\leq 25 \text{ ns}$
Cut-off frequency $f_g$ (3 dB) in 75 $\Omega$ system (typ):	common	4 MHz to 1 GHz
Connection acc. to DIN 45 325:		F Connector
Temperature range:		- 40 °C to + 80 °C
Protection type acc. to IEC 529/ EN 60 529:		IP 20

### Dimensional drawing



### Block diagram



Diagram

