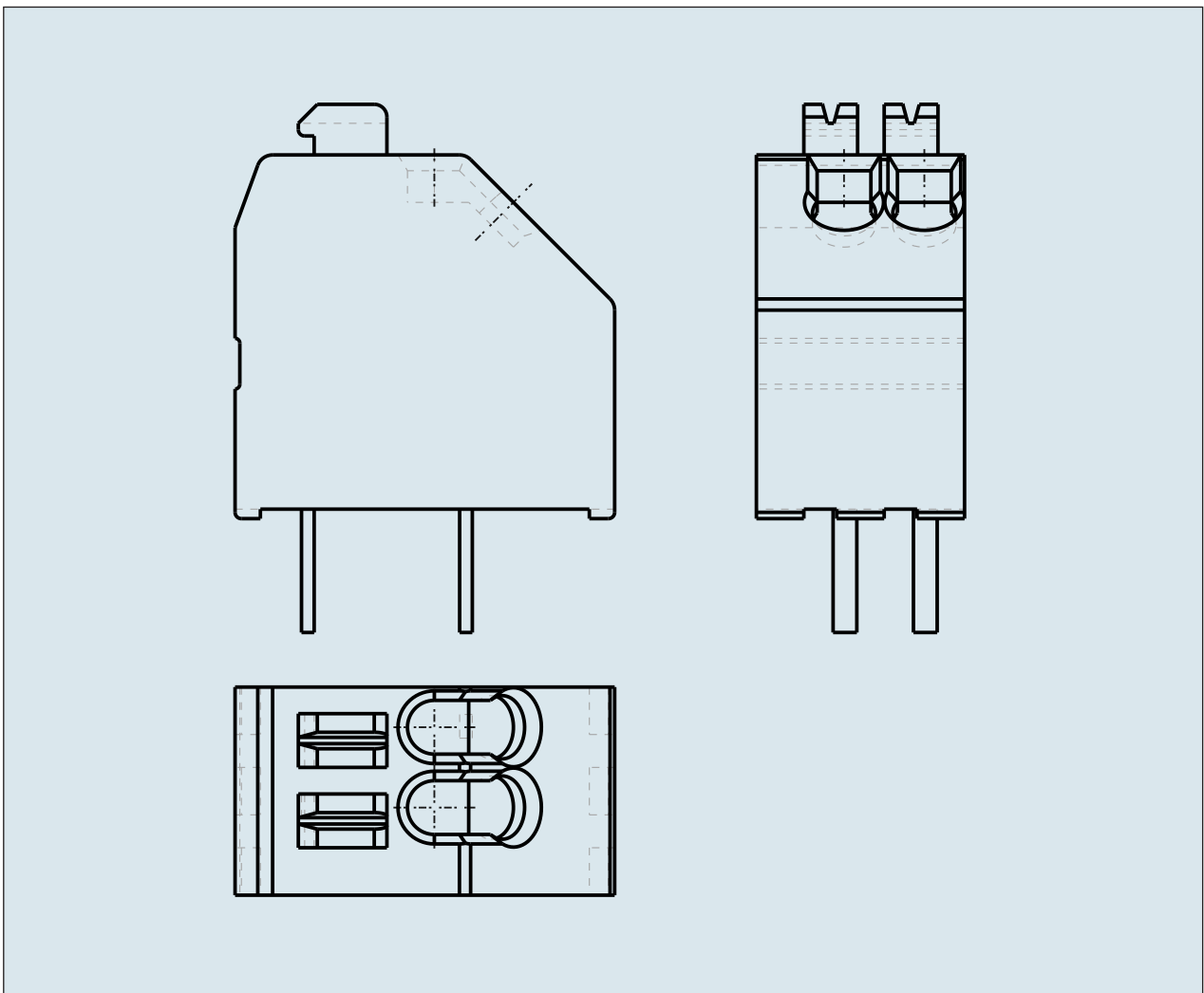
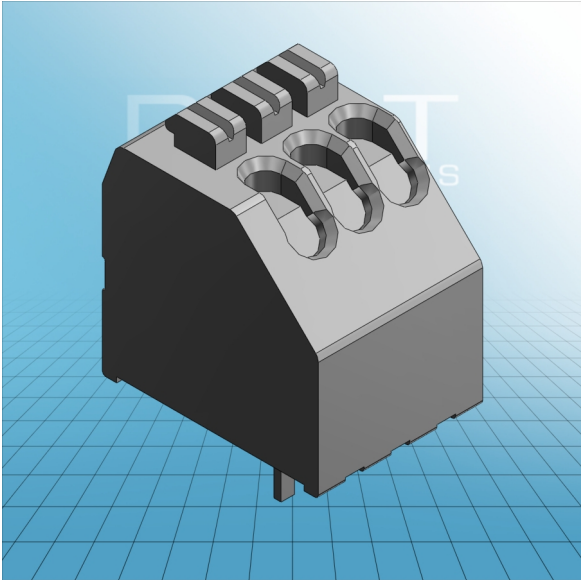


**1-CONDUCTOR PCB TERMINAL
STRIP 1 SOLDER PIN / POLE
STAGGERED PIN SPACING 2.54 MM /
0.1 IN WITH PUSH BUTTONS**



**1-CONDUCTOR PCB TERMINAL
STRIP 1 SOLDER PIN / POLE
STAGGERED PIN SPACING 2.54 MM /
0.1 IN WITH PUSH BOTTONS
250-1402 TO 250-1424**

ITEM-NO. (ITEM-NO.)	250-1403
DIAMETER1 (DIAMETER / mm)	0.2 - 0.5
DIAMETER2 (DIAMETER / AWG)	24 - 20
Strip length (Strip length / mm)	8.5 - 9.5
Measured voltage (Measured voltage / V)	160
Measured shock voltage (Measured shock voltage / kV)	2.5
Pollution degree (Pollution degree)	2
Current intensity (Current intensity / A)	4
RM (PIN SPACING / mm)	2.54
P (NO. OF POLES)	3
Height (Height / mm)	13.1
Width (Width / mm)	9.12
Depth (Depth / mm)	12
No. of connection Points (No. of connection Points)	3
No. of potentials (No. of potentials)	3
COLOR (COLOR)	grau
WEIGHT (WEIGHT / g)	1.133
Comment (Comment)	L = (No. of poles x Pin Spacing) + 1.5 mm
Dimensions (Dimensions)	1.1 +0.1 mm