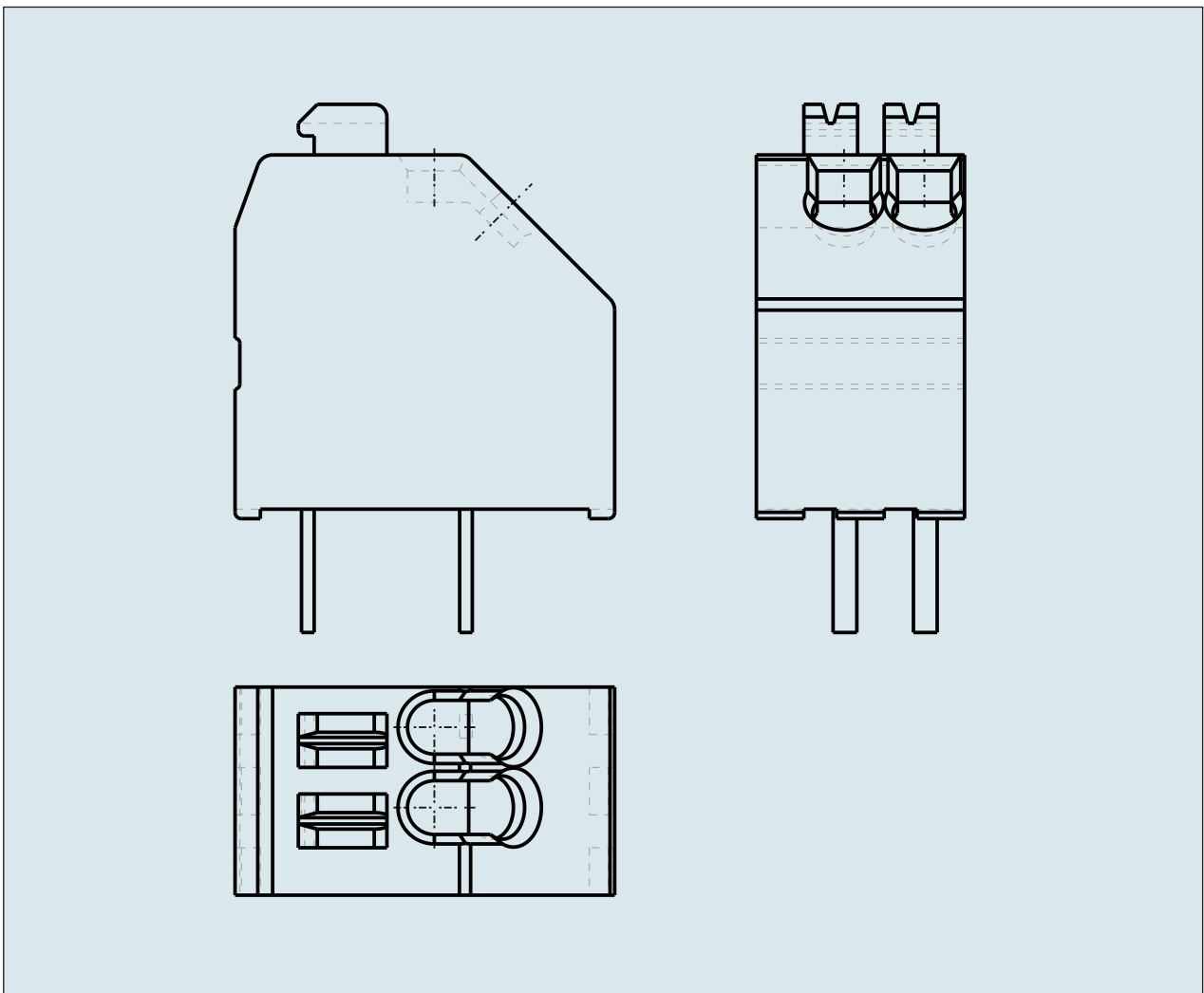
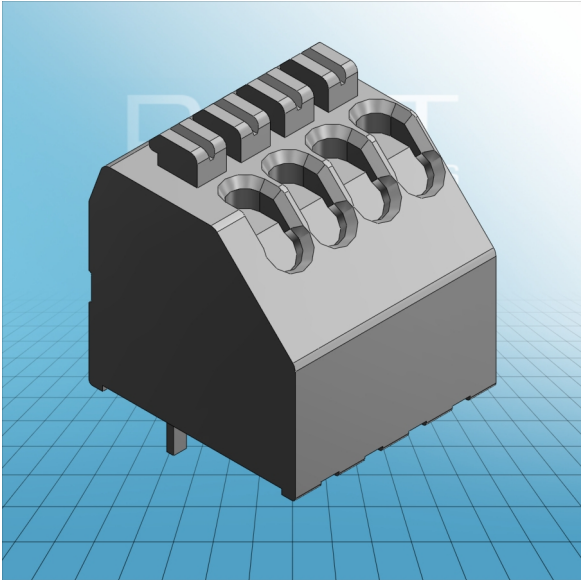


**1-CONDUCTOR PCB TERMINAL
STRIP 1 SOLDER PIN / POLE
STAGGERED PIN SPACING 2.54 MM /
0.1 IN WITH PUSH BUTTONS**



**1-CONDUCTOR PCB TERMINAL
STRIP 1 SOLDER PIN / POLE
STAGGERED PIN SPACING 2.54 MM /
0.1 IN WITH PUSH BUTTONS
250-1402 TO 250-1424**

| | |
|---|---|
| ITEM-NO. (ITEM-NO.) | 250-1404 |
| DIAMETER1 (DIAMETER / mm) | 0.2 - 0.5 |
| DIAMETER2 (DIAMETER / AWG) | 24 - 20 |
| Strip length (Strip length / mm) | 8.5 - 9.5 |
| Measured voltage (Measured voltage / V) | 160 |
| Measured shock voltage (Measured shock voltage / kV) | 2.5 |
| Pollution degree (Pollution degree) | 2 |
| Current intensity (Current intensity / A) | 4 |
| RM (PIN SPACING / mm) | 2.54 |
| P (NO. OF POLES) | 4 |
| Height (Height / mm) | 13.1 |
| Width (Width / mm) | 11.66 |
| Depth (Depth / mm) | 12 |
| No. of connection Points (No. of connection Points) | 4 |
| No. of potentials (No. of potentials) | 4 |
| COLOR (COLOR) | grau |
| WEIGHT (WEIGHT / g) | 1.58 |
| Comment (Comment) | L = (No. of poles x Pin Spacing) + 1.5 mm |
| Dimensions (Dimensions) | 1.1 +0.1 mm |