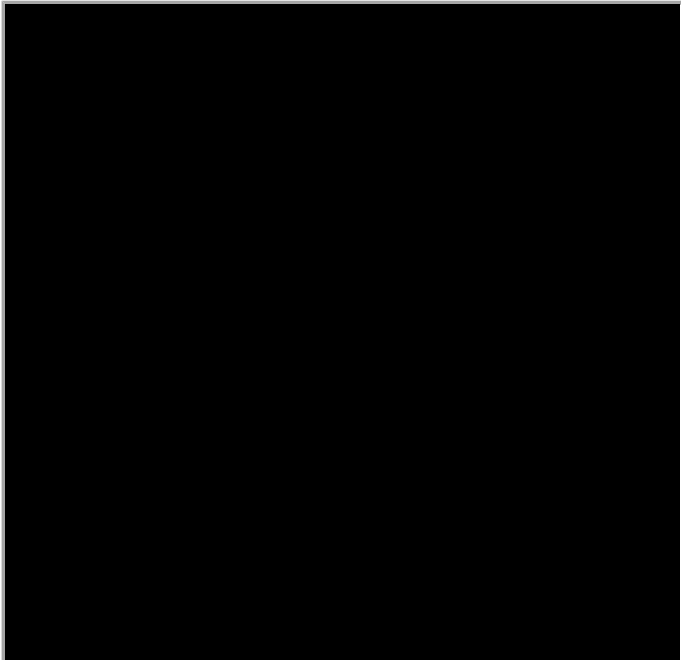


Data sheet | Item number: 770-688

Distribution connector for switches; Single-pole and throttle two-way circuit;
3-pole; Cod. A/S; 1 input; 5 outputs



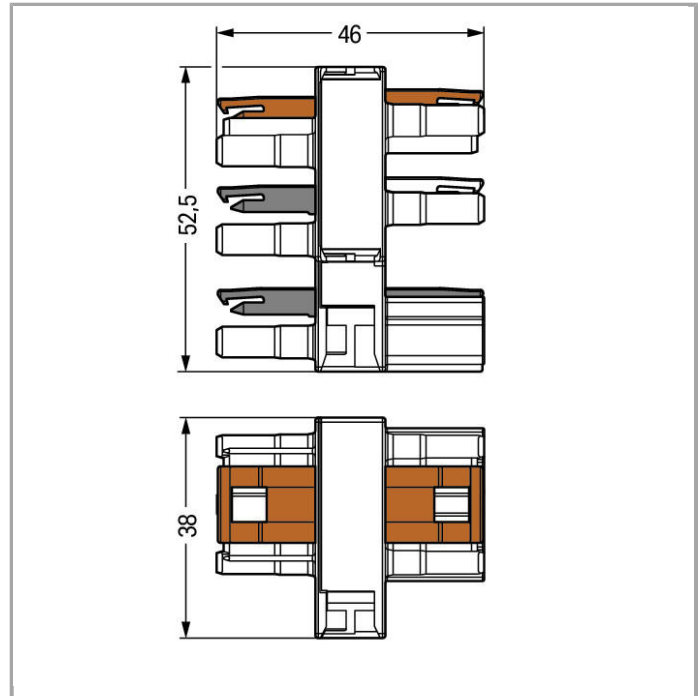
www.wago.com/770-688



RoHS
Compliant

[BOMcheck.net](https://www.bomcheck.net)

Color:



Item description

Note:

All connectors for mounted installations (snap-in versions for lighting fixtures or devices, all types of PCB and distribution connectors) are factory-equipped with locking levers to ensure plugs and sockets are securely locked. Additional locking levers are only required for flying leads (plug /socket).

Data

Electrical data

Ratings per IEC/EN 60664-1

Rated voltage (III / 3)	250 V
Rated impulse voltage (III / 3)	4 kV
Rated current	25 A
Legend (ratings)	(III / 3) \triangleq Overvoltage category III / Pollution degree 3



Connection data

No. of poles	3
Total number of potentials	3

Geometrical Data

Pin spacing	10 mm (0.394 inch)
Width	38 mm / 1.496 inch
Height	52.5 mm / 2.067 inch
Depth	46 mm / 1.811 inch

Mechanical data

Coding	A
Mating force of a plug-in connection	approx. 20 ... 70 N (depending on pole number)
Retention force of a plug-in connection	when locked: > 80N
Unmating force of a plug-in connection	when unlocked: approx. 20 ... 70 N (depending on pole number)
Type of distribution connector	Distribution connector for single-pole switch or two-way circuits
Degree of protection	IP20

Plug connection

Contact type (pluggable connector)	Socket/plug
Mismating protection	Yes
Locking of plug-in connection	locking lever
Locking lever	yes

Material Data

Color	white
Insulating material	Polyamide 66 (PA 66)
Flammability class per UL94	V0
Contact material	Copper or copper alloy, surface-treated
Fire load	0.701 MJ
Weight	43.029 g

Environmental Requirements

Surrounding air (operating) temperature	-35 ... 85 °C
---	---------------

Commercial data


Country of origin	DE
GTIN	4045454251604

Customs Tariff No.




85366990990

Approvals / Certificates

Country specific Approvals


Logo	Approval	Certificate name
	CCA DEKRA Certification B.V.	2173495.02
	CCA DEKRA Certification B.V.	NL-32105

Ship Approvals

Logo	Approval	Certificate name
	ABS American Bureau of Shipping	14-HG1241528-PDA
	DNV GL Det Norske Veritas, Germanischer Lloyd	TAE00001Z6
	LR Lloyds Register	02/20050 (E6)

Compatible products

assembling

	Item no.: 770-623 Mounting plate; for distribution connector	www.wago.com/770-623
	Item no.: 770-673 Mounting plate; for distribution connector	www.wago.com/770-673

protection

	Item no.: 770-201 Lockout cap; for socket; 12-pole; separable	www.wago.com/770-201
	Item no.: 770-221 Lockout cap; for socket; 12-pole; separable	www.wago.com/770-221
	Item no.: 770-360 Lockout cap; for plugs; 5-pole; separable	www.wago.com/770-360



Downloads

Documentation

Bid Text

770-688	Feb 1, 2016	DOC	Download
WINSTA MIDI 3-polig		24.1 kB	

Subject to changes.