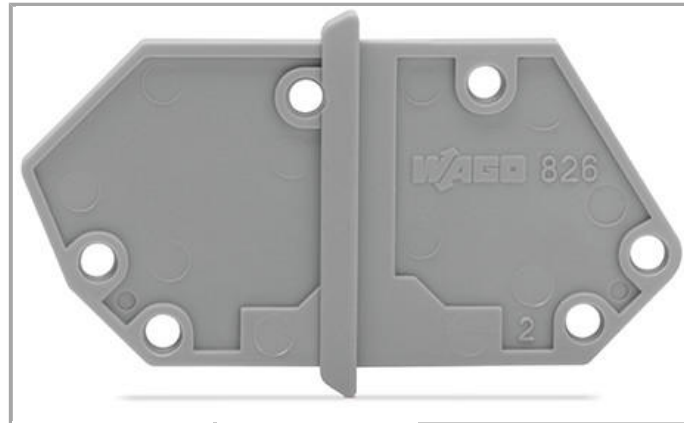


Data sheet | Item number: 826-158
End plate; snap-fit type; 1.5 mm thick

www.wago.com/826-158



RoHS
Compliant

BOMcheck.net

Color: ■

Data

Geometrical Data

Width	1.5 mm / 0.059 inch
Height	20 mm / 0.787 inch
Depth	42.5 mm / 1.673 inch

Material Data

Color	gray
Fire load	0.02 MJ
Weight	0.92 g

Commercial data

Country of origin	DE
GTIN	4017332607193
Customs Tariff No.	85389099990
Product Group	4 (Printed Circuit)

Downloads

smartDATA

CAD data



3D Download 826-158

URL

Download

Subject to changes.

WAGO Kontakttechnik GmbH & Co. KG
Hansastr. 27
32423 Minden
Phone: +49571 887-0 | Fax: +49571 887-169
Email: info.de@wago.com | Web: www.wago.com

Do you have any questions about our products?
We are always happy to take your call at +49 (571) 887-44222.