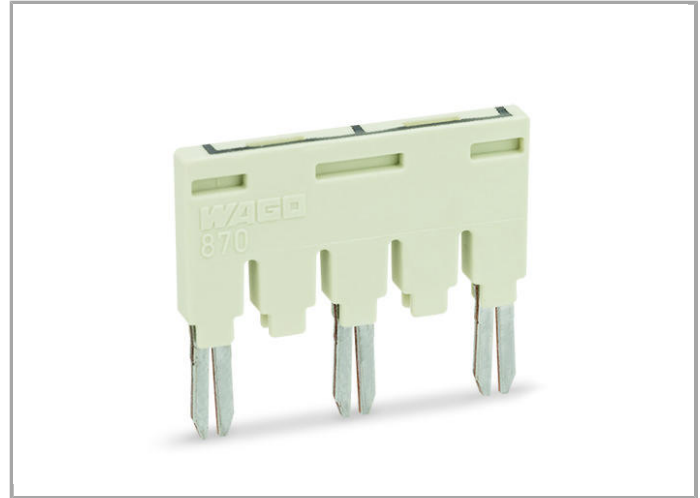
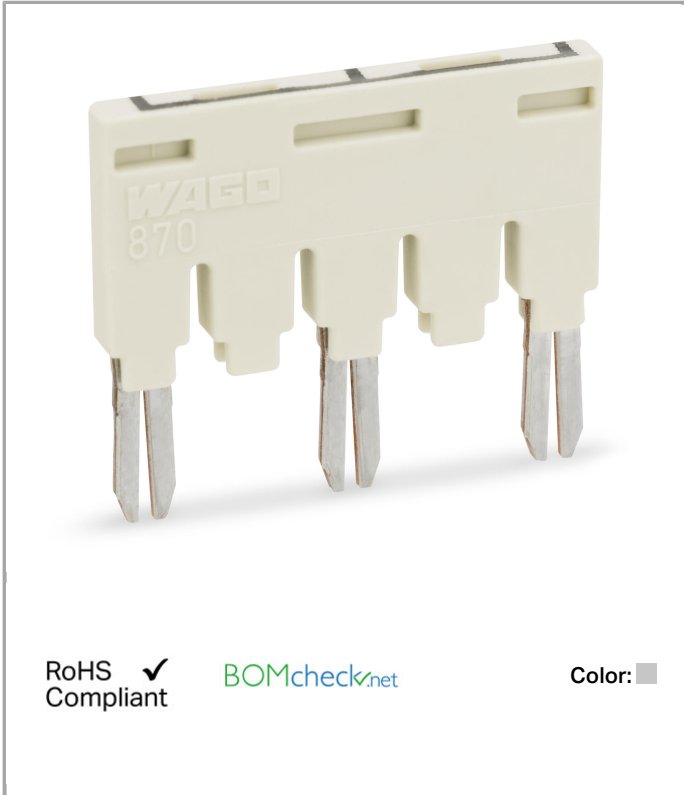


Data sheet | Item number: 870-405/011-000

Ready-made push-in type jumper bar; insulated; 3-way (1-3-5); Nominal current 18 A



www.wago.com/870-405/011-000



RoHS Compliant

[BOMcheck.net](https://www.bomcheck.net)

Color:

Data

Electrical data

Ratings per IEC/EN 60664-1

Rated current	18A
---------------	-----

Geometrical Data

Width	24 mm / 0.945 inch
-------	--------------------

Depth	2.5 mm / 0.098 inch
-------	---------------------

Material Data

Color	light gray
-------	------------

Fire load	0.025 MJ
-----------	----------

Weight	0 g
--------	-----



Commercial data

Country of origin	DE
Customs Tariff No.	85366990990
Product Group	16 (Rail Mounted Terminal Block with CCC)

Downloads

Documentation

Bid Text

870-405/011-000	Mar 13, 2018	DOC 24.1 kB	Download
-----------------	--------------	----------------	----------

Subject to changes.