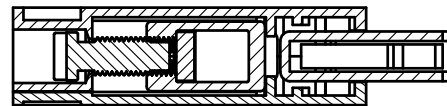
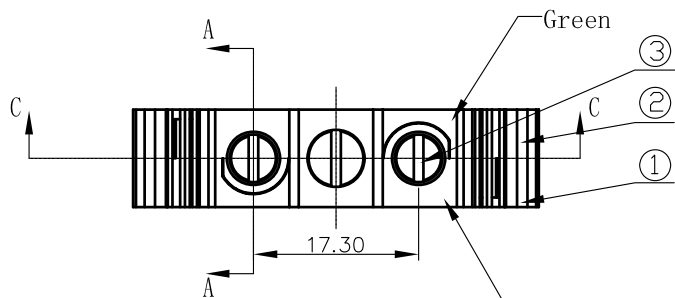
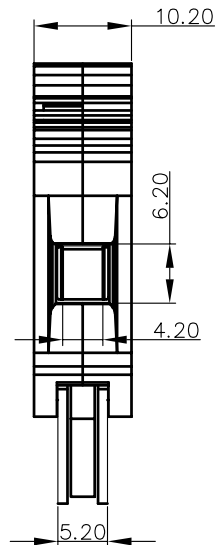
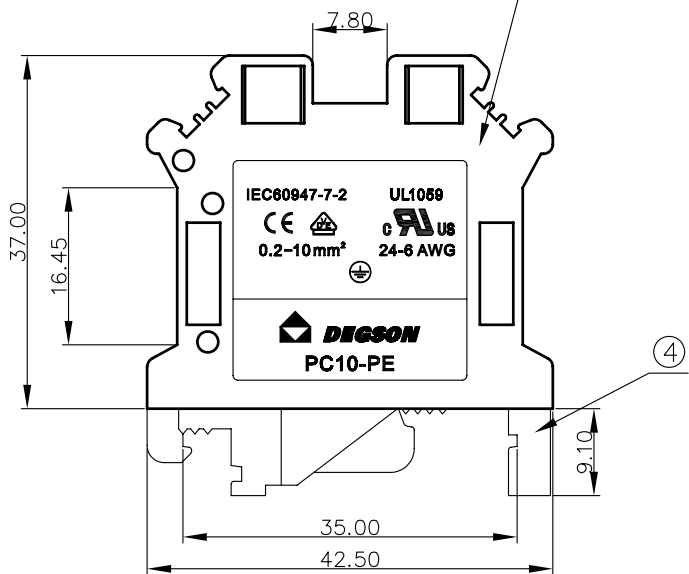


REVISION RECORD				
REV	ECN	DESCRIPTION	DRFT	DATE



NOTES:

- 1.DIMENSION SHALL BE INTERPRETED PER ASME Y14.5-2009.
- 2.THICKNESS: 10.2MM
- 3.OPERATION TEMPERATURES: -40°C~+105°C
- 4.WIRE RANGE: 24~6AWG,0.2~10MM²
- 5.MAX.TORQUE VALUE:M4,12.24KGF.CM
- 6.UNDIMENSIONED TOLERANCES:



Pitch range in mm		Nominal dimension range in mm						
	over 6	over 10		over 30	over 60	over 100	over 150	—
to 6	to 10	to 24	to 30	to 60	to 100	to 150		⤿
±0.10	±0.15	±0.25	±0.2	±0.3	±0.5	±0.7	±1.0	0.05/10

ITEM	NAME OF PART	NO. OF PART	Q"TY	MATERIAL	NOTES
3	PC6 Screw	S000001490(H)	2	Brass	Ni plated
2	PC6-PE-Housing	6016A0401A(H)	1	PA66	UL94V-0
1	PC10-PE-Housing	6008A0801A(H)	1	PA66	UL94V-0

DETACHED LISTS	MM (INCH)		MATERIAL:		DEGSON®	
	TOLERANCES EXCEPT AS NOTED		FINISH:			
	.X ±	.X' ±	PART NO.:		NAME:	
	.XX ±	.XX' ±			PC10-PE-01P-1Y-00A(H)	
.XXX ±	.XXX' ±	APPD:		TITLE: ASSEMBLY DRAWING		
ANGLES ± 1°		CHKD:		DRAWING NO.: PC10-PE-E01		
THIRD ANGLE PROJECTION		DRFT: longle 01/10/'05		DO NOT SCALE DRAWING		
		SCALE N/A		REV T7	SHEET 1/1	

5	PC10-PE-BRASS CAGE	X000001290(H)	2	Brass	Ni plated
4	PC10-PE-GROUNDING PART	6008B00010(H)	1	Steel	Zn plated