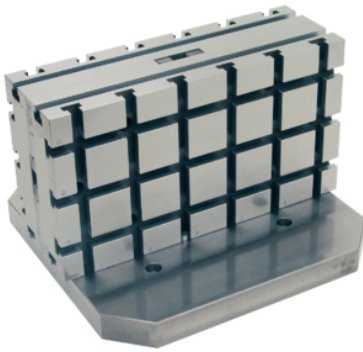


Clamping Angles• modular design

1104.900



Product Description

The modular clamping angle is a unit consisting of a support plate and two base plates. Assembly or disassembly is possible within a very short time. The base plates used correspond to the respective standard version.

Material

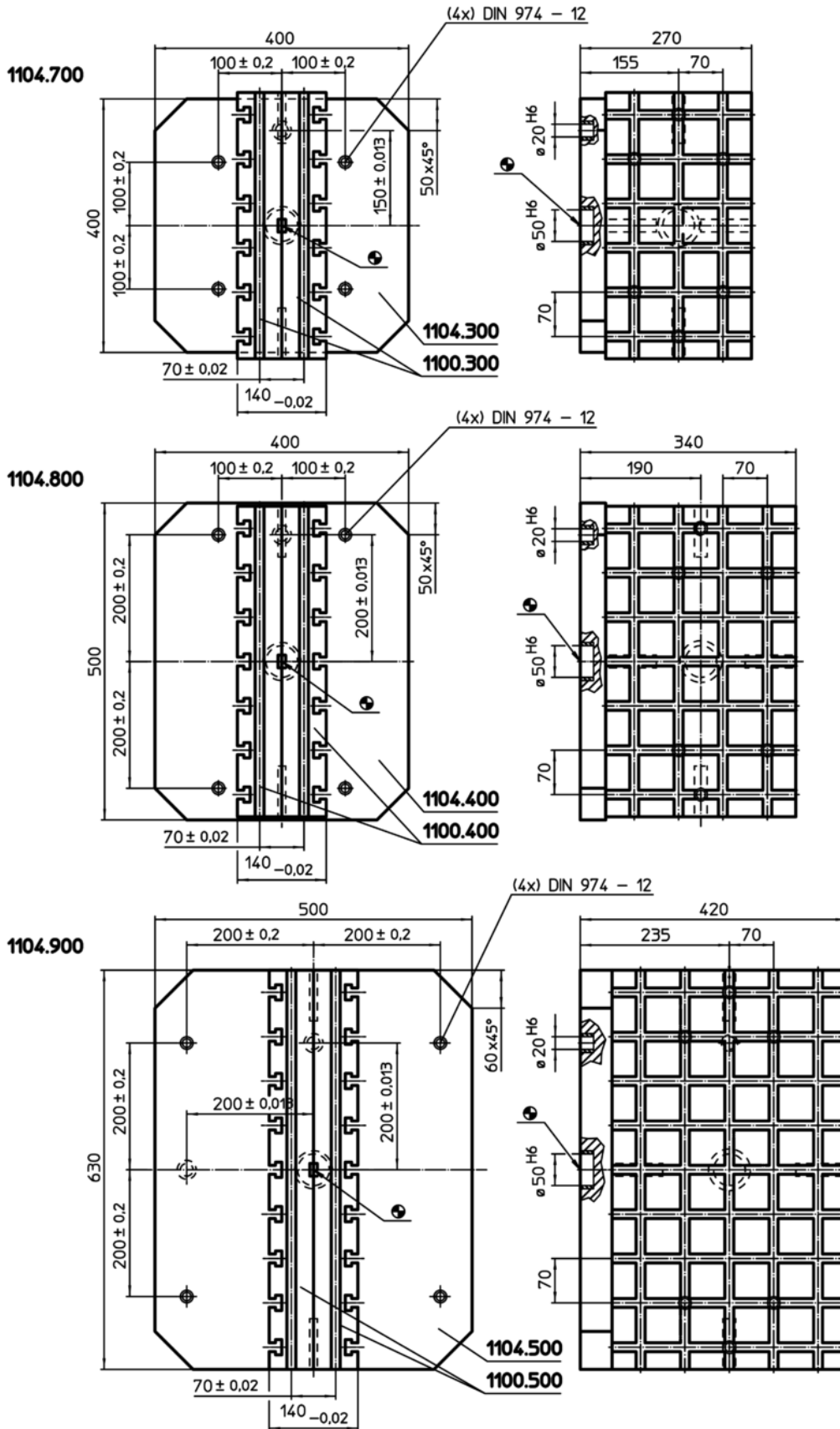
Body

- Grey cast iron GG


Base plate

- Steel, case-hardened, ground

Drawing



Order information

System	 [kg]	Art. No.
V70	299	1104.900