

Clamping Cubes

1508.200



Product Description

Material

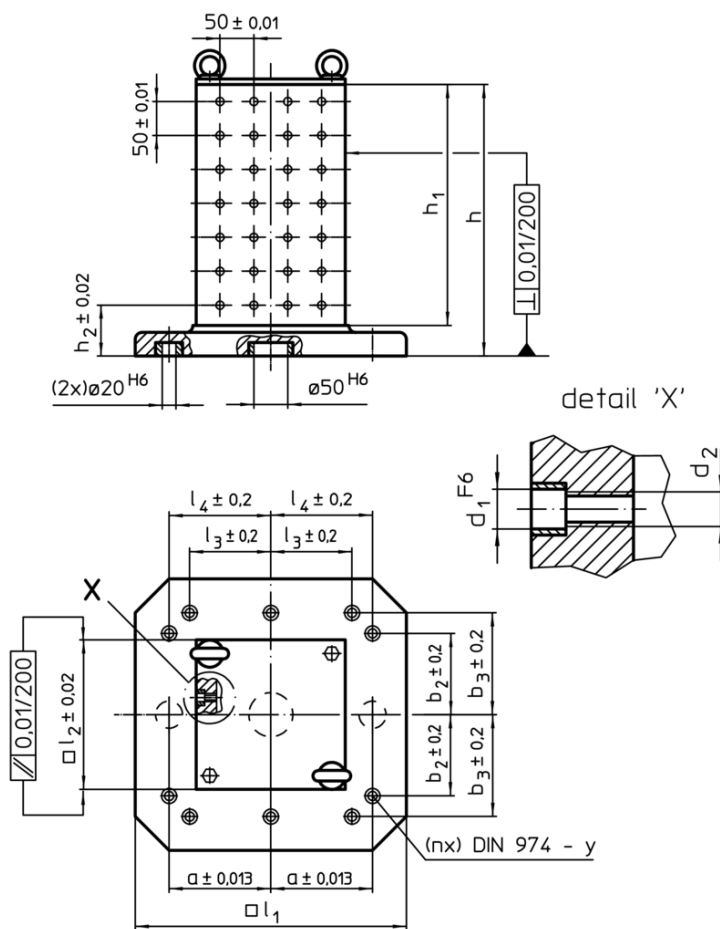
- Grey cast iron GG

More information


Notes

Special types on request.

Drawing



Order information

System	Dimensions										y	For screws	Amount fastening holes n	Number of hole rows	 [kg]	Art. No.
	l ₁	l ₂	h ₁	h	h ₂	d ₁	d ₂	a	b ₂	l ₄						
L12	400	230	358	408	75	12	M12	150	150	150	12	M12	4	4 x 7	97	1508.200