

Insertion Tools

1586.260

Product Description

Keeps the workpiece in position during the clamping process.

Material

- Steel, blackened

Assembly

The supports (Art. No. 1586.200, 1586.201 and 1586.202) are required.

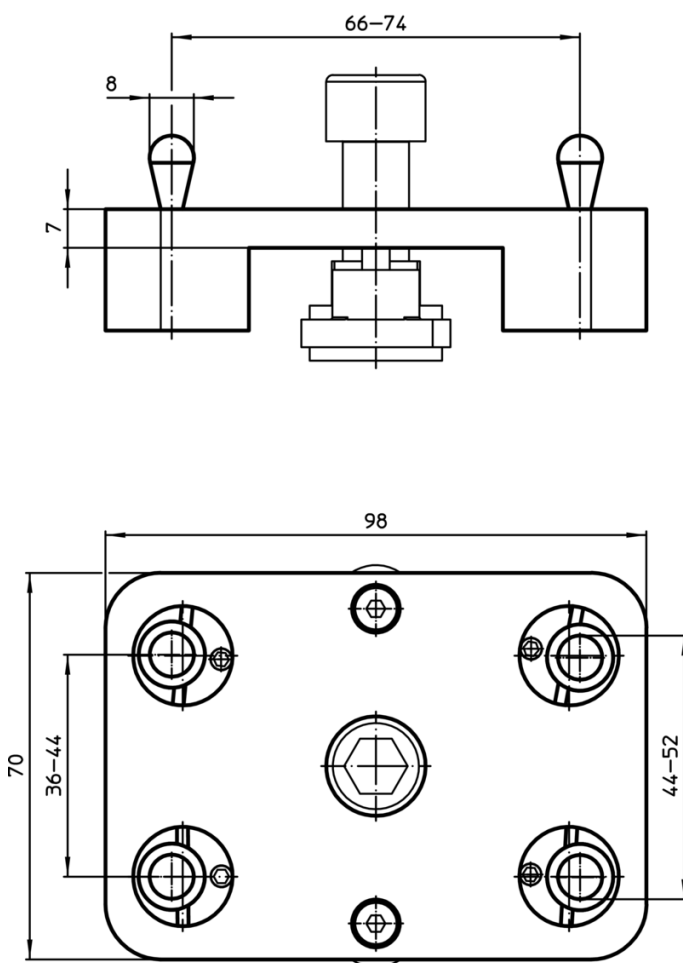
More information

Notes

Spring load of 100 N per lateral spring plunger.



Drawing



Order information

	[g]	Art. No.
	800	1586.260