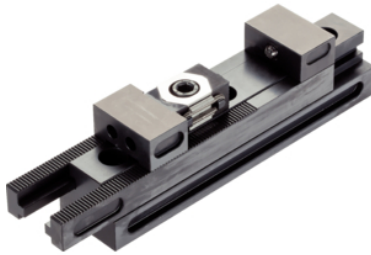


Combination Clamping Bars

1586.400

Product Description



The combination clamping bar offers 3 ways to clamp/support the workpiece:

- Floating mode

Floating mode is used to clamp and support additional clamping points on components.

- Centric mode

The jaws of the clamping bar move in sync. The centre axis of the workpiece remains unchanged even if the outer diameters are modified.

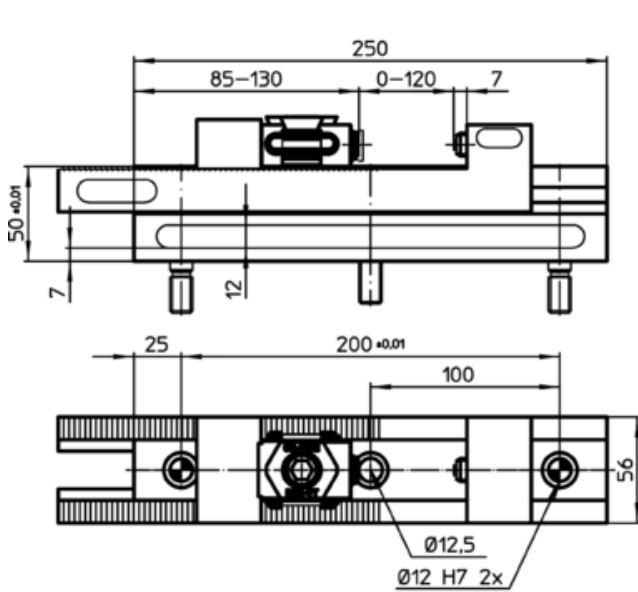
- Machine vice mode

When this mode is selected, one of the jaws is locked in place on the clamping bar. The second jaw remains movable.

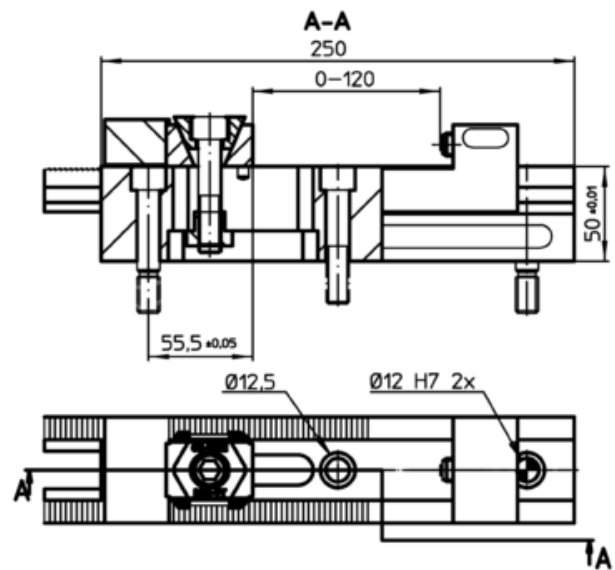
Material

- Tool steel, hardened

Drawing




floating mode



machine vice mode

Order information

	Art. No.
[g]	
5360	1586.400