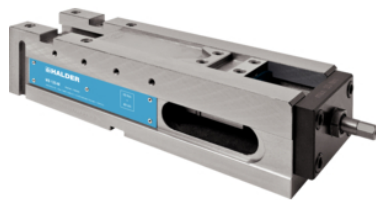


## Multi-Vices· MS 125

1700.100



### Product Description

#### Scope of application:

- Can be applied horizontally and vertically - therefore suitable for vertical and horizontal CNC milling machines
- Conventional clamping, gripper clamping or pull-down clamping are all possible
- MS 125-S - ideal for use on five-axis machining centres
- Clamping of unmachined parts, saw-cut or flame-cut material by penetration of hardened, replaceable gripper elements into the workpiece
- With the support jaws, unmachined parts in highly varied materials, or with complex geometries, can be clamped securely and economically

#### Product features:

- High versatility - the modular clamping system combines practically all the possibilities of our tried-and-tested models
- High-pressure spindle with power intensification - clamping force does not slacken
- Enlarged clamping span for secure clamping of unmachined parts
- Lost clamping margin 8 mm with pull-down clamping, 3 mm with gripper clamping
- Clamping with torque wrench (max. 30 Nm) - this makes it possible to work above the table with an unfavourable clamping arrangement on the tool

#### Scope of supply:

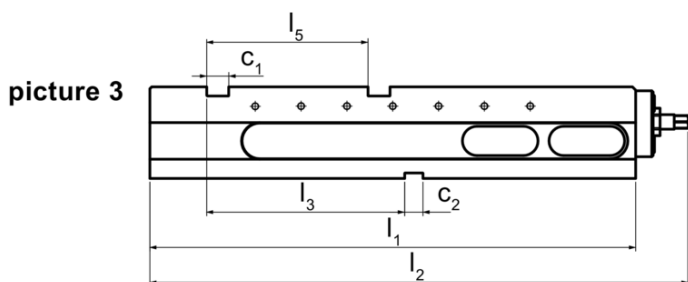
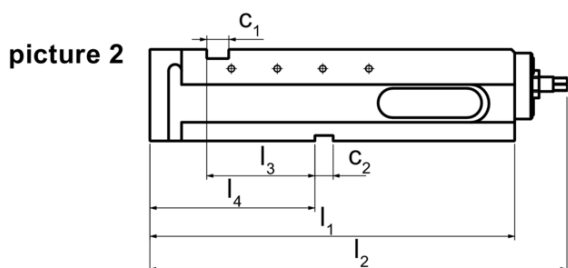
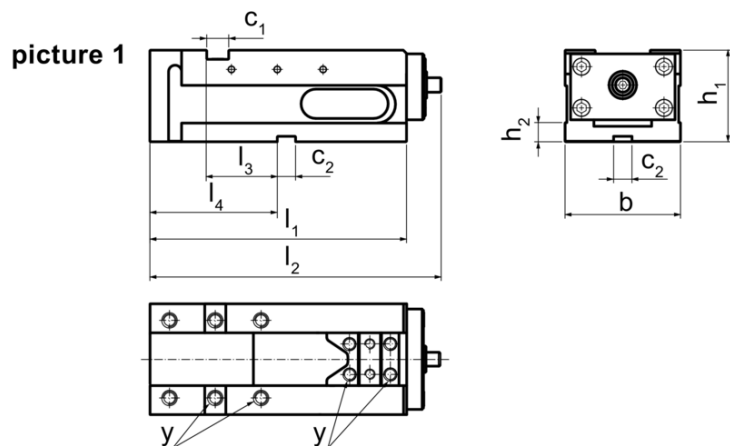
- 1 high-pressure vice without jaws
- 1 set of clamping elements
- 3 socket screw wrenches
- 1 hexagonal insert for torque wrench 3/8"

**Please order the clamping jaws separately.**

#### Material

- Ductile cast iron (GGG 60)

Drawing



Order information

| Jaw width<br>[mm]    | Dimensions |       |       |       |       |       |       |       |       |     | Tightening torque<br>max.<br>[Nm] | Clamping force<br>max.<br>[kN] | 🔧<br>[kg] | Art. No. |
|----------------------|------------|-------|-------|-------|-------|-------|-------|-------|-------|-----|-----------------------------------|--------------------------------|-----------|----------|
|                      | b          | $l_1$ | $l_2$ | $l_3$ | $l_4$ | $h_1$ | $h_2$ | $c_1$ | $c_2$ | y   |                                   |                                |           |          |
| MS 125-S – picture 1 |            |       |       |       |       |       |       |       |       |     |                                   |                                |           |          |
| 125                  | 126        | 280   | 318   | 77    | 139   | 100   | 21    | 24    | 20    | M12 | 30                                | 40                             | 18        | 1700.100 |