

Step Jaws

1701.100



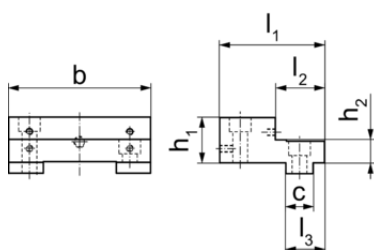
Product Description

- Top face and side face, with thread for mounting of parallel jaws
- Ground clamping surfaces
- Additional threads for parallels and for mounting the interchangeable jaws (Art. No. 1701.250-1701.280) on the smooth side
- Mountings for click system (Art. No. 1701.190-1701.200) on both sides of the jaw

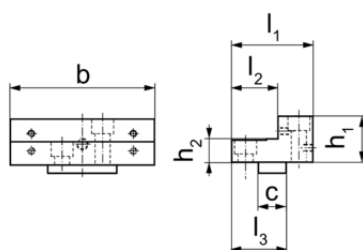
Material

- Steel, hardened

Drawing




picture 1

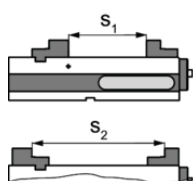


picture 2

Order information

Jaw width	Dimensions								Art. No.
[mm]	b	l ₁	l ₂	l ₃	h ₁	h ₂	c	 [g]	
Jaw, fixed – picture 1									
125	124,4	92	43	34	39,5	20	24	2800	1701.100

Application example



	MS 125-S	MS 125-M	MS 125-L
Clamping width s ₁	0 - 62	0 - 182	0 - 312
Clamping width s ₂	85 - 193	131 - 313	88 - 443