

Master Jaw Adapters

1701.140



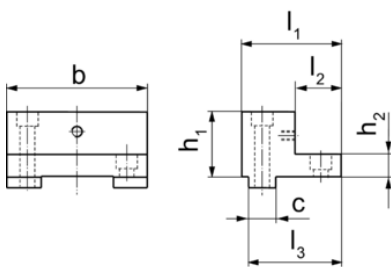
Product Description

- High side of the jaw is hardened
- Additional thread for mounting the interchangeable jaws (Art. No. 1701.250 - 1701.280)
- Ground clamping surfaces
- Mountings for click system (Art. No. 1701.190 -1701.200) on the high side of the jaw

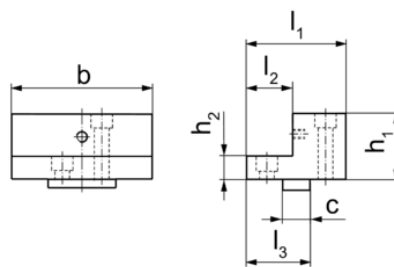
Material

- Steel

Drawing



picture 1

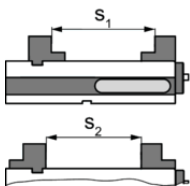


picture 2

Order information

Jaw width [mm]	Dimensions							[g]	Art. No.
	b	l ₁	l ₂	l ₃	h ₁	h ₂	c		
Jaw, fixed – picture 1									
125	126	85	32	77	58	20	24	3800	1701.140

Application example



	MS 125-S	MS 125-M	MS 125-L
Clamping width s ₁	66 - 126	71 - 243	66 - 376
Clamping width s ₂	0 - 107	47 - 224	0 - 357