

Pull-Down Sets· low

1703.100

Product Description

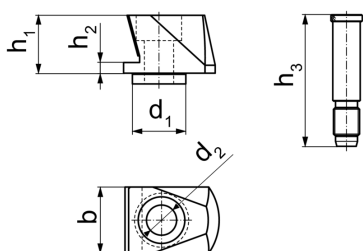


- Pull-down elements are suitable for clamping and pulling down clamping surfaces that are unmachined or pre-machined onto the guideway or onto the supplied clamping bolts
 - This way workpieces can be clamped almost exactly parallel to the guideway for machining
 - The direct contact to the clamping bolts largely reduces vibrations in the workpiece
- Supplied in handycase consisting of:
- 4 x wedge adapter, low (Art. No. 1703.300)
 - 4 x bolts, low M 10 x 30 mm (Art. No. 1703.320)
 - 4 x wedge element, 4 point (Art. No. 1703.340)
 - 4 x wedge element Microgripper (Art. No. 1703.350)
 - 4 x clamping bolts 23 mm (Art. No. 1703.400)
 - 4 x clamping bolts 34 mm (Art. No. 1703.420)

Material

- on request

Drawing



Order information

Jaw width [mm]	Dimensions						[g]	Art. No.
	b	d ₁	d ₂	h ₁ [mm]	h ₂	h ₃		
125	24	20	11	21,7	4	23/34	1484	1703.100