

## Connecting Elements• modular, hydraulically operated

### 1990.101

#### Product Description



#### Material

##### Body

- Steel, case-hardened, ground

##### Control module

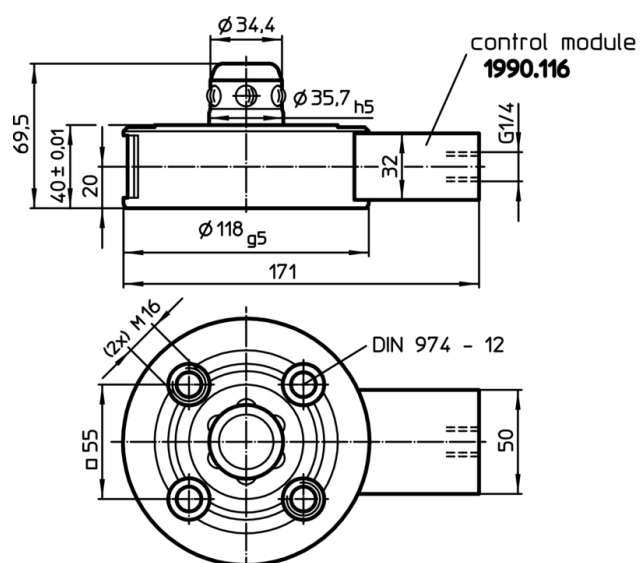
- Steel, blackened

#### More information


#### Further products

- Connecting Rings
- Coverings, for connecting elements
- Pressure Amplifier

#### Drawing



#### Order information

Holding force	Centering accuracy <	Release pressure		Art. No.
[N]	[mm]	[bar]	[g]	
10000	0,01	80 – 120	3500	1990.101

# Application example

