

Locating bushing with seal, plain• for lifting pins

22350.1960



Product Description

Locating bushings are used for quick and safe locating of lifting pins EH 22350. This design is suitable for applications which require installation flush to the surface. Corrosion and abrasion resistant.

Material

Bushing

- Stainless steel 1.4542, precipitation-hardened

O-ring

- NBR

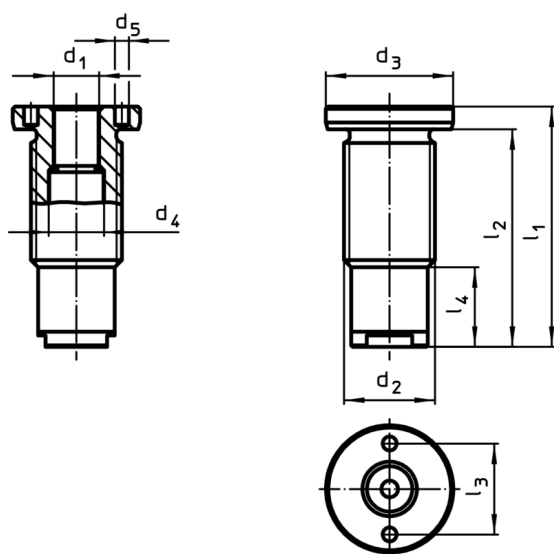
Spring

- Stainless steel

Assembly

Ensure safe tolerances and consistent function. Easily incorporable into different materials. Can be used in thin-walled pieces. Bush can be easily installed via optional assembly tool.

Drawing






Order information

Dimensions		For nominal length l [mm]	Dimensions							Tightening torque max. [Nm]	x ¹⁾ [mm]	Carrying force ¹⁾			For lifting pin	Art. No.
d ₁ H11 [mm]	d ₂ [mm]		d ₃ -0,2 [mm]	d ₄ +0,3 [mm]	d ₅ +0,1 [mm]	l ₁ [mm]	l ₂ [mm]	l ₃ [mm]	l ₄ [mm]			F ₁ [kN]	F ₂ [kN]	F ₃ [kN]		
8	M16 x 1,5	10	24	9,9	3,1	37,5	32,5	16	12,5	75	1,5	1,5	1,2	0,5	22350.0601 / .0701	40 22350.1960

¹⁾ for a 5-fold safety against breakage

Accessories

	d ₁ [mm]	 [g]	Art. No.
adjustable face spanner, offset			
	8/10/12	121	22350.1990
face and socket wrench			
	8	116	22350.1995

Application example

