

## Locating bushing with seal, plain- for lifting pins

22350.1963



No Photo  
available

### Product Description

Locating bushings are used for quick and safe locating of lifting pins EH 22350. This design is suitable for applications which require installation flush to the surface. Corrosion and abrasion resistant.

### Material

#### Bushing

- Stainless steel 1.4542, precipitation-hardened

#### O-ring

- NBR

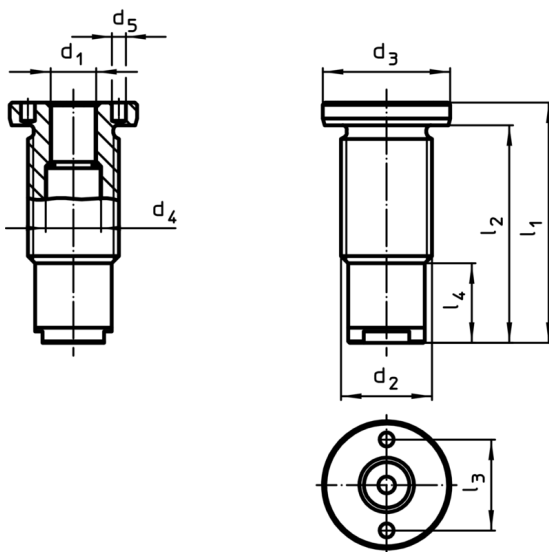
#### Spring

- Stainless steel

### Assembly

Ensure safe tolerances and consistent function. Easily incorporable into different materials. Can be used in thin-walled pieces. Bush can be easily installed via optional assembly tool.

### Drawing






### Order information

Dimensions		For nominal length l [mm]	Dimensions							Tightening torque max. [Nm]	x <sup>1)</sup> [mm]	Carrying force <sup>1)</sup> [kN]			For lifting pin	[g]	Art. No.
d <sub>1</sub> H11 [mm]	d <sub>2</sub> [mm]		d <sub>3</sub> -0,2	d <sub>4</sub> +0,3	d <sub>5</sub> +0,1	l <sub>1</sub>	l <sub>2</sub>	l <sub>3</sub>	l <sub>4</sub>			F <sub>1</sub>	F <sub>2</sub>	F <sub>3</sub>			
16	M30 x 2	25	39	19,3	5,1	78	72	30	33	200	1,5	4,8	4,5	4,1	22350.0641 / .0741	253	22350.1963

<sup>1)</sup> for a 5-fold safety against breakage

Accessories

	d <sub>1</sub> [mm]	 [g]	Art. No.
<b>adjustable face spanner, offset</b>			
	16/20/25	309	22350.1991
<b>face and socket wrench</b>			
	16/20	243	22350.1998

Application example

