

## Clamping Jaws- for floating clamp M 12

23320.0156



### Product Description

The clamping jaws can be used for the floating clamps 23320.0008, 23320.0012 and 23320.0014. The upper clamping jaw (23320.0054, 23320.0056 and 23320.0058 - picture 1-3) can be used to increase the clamping range.

In the upper clamping jaw with female thread M 8 (23320.0154 / .0156 - picture 4 + 5) different standard parts can be screwed in as required.

The lower clamping jaw with pivot function (23320.0148 - picture 6) adapts to the draughts of the workpiece.

### Material

#### Clamping Jaws

- Case hardened steel, nitrided, manganese phosphate treated

### More information

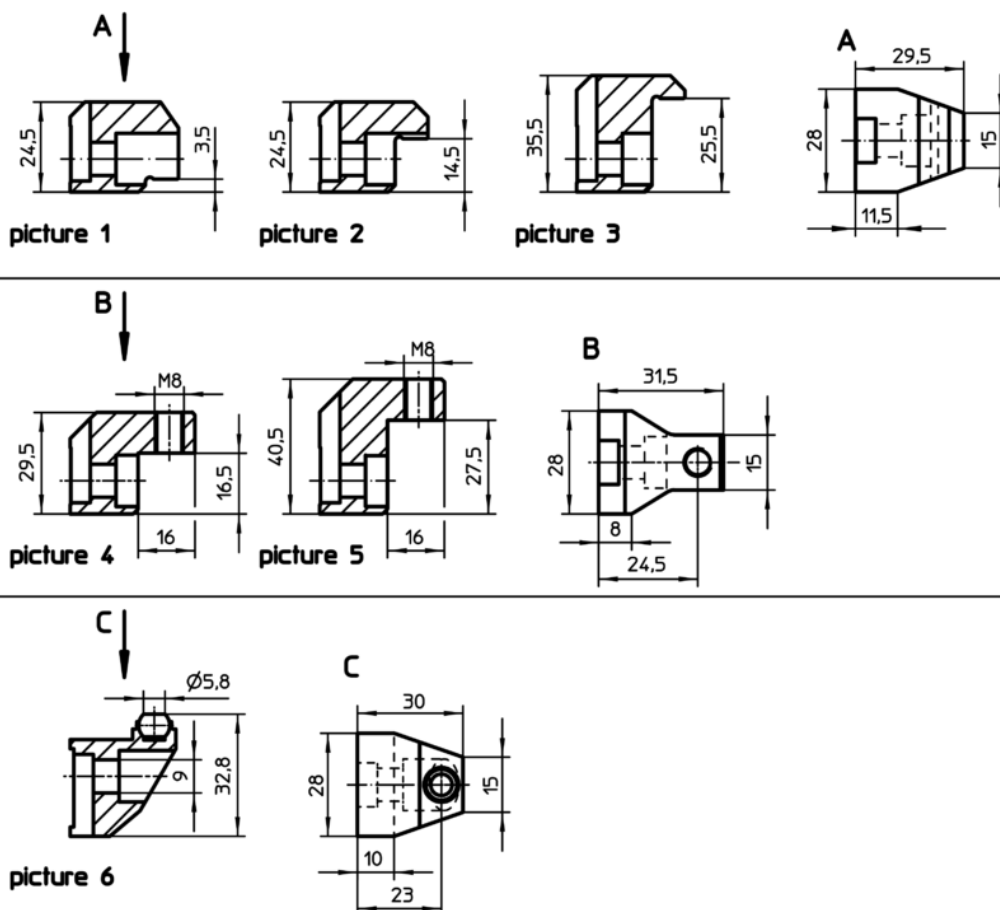
#### Notes

The tightening torque of the floating clamp must be adapted/reduced situationally. Observe the surface pressure due to the reduced contact surface of the clamping jaws.


#### Further products

- Seating Pins, ribbed or pointed
- Ball-Ended Thrust Screws, headless, ball protected against rotating
- Ball-Ended Thrust Screws, headless, round ball
- Ball-Ended Thrust Screws, headless, flat-faced ball
- Thrust Screws, with brass pad
- Thrust Screws, with plastic pin
- Self-Aligning Pads, adjustable
- Self-Aligning Pads, adjustable with self-resetting

### Drawing



Order information

Clamping range max. in combination with 23320.0050 [mm]	Clamping range max. in combination with 23320.0148 [mm]	 [g]	Art. No.
upper clamping jaw with location hole – picture 5			
40	34	112	23320.0156

Application example

